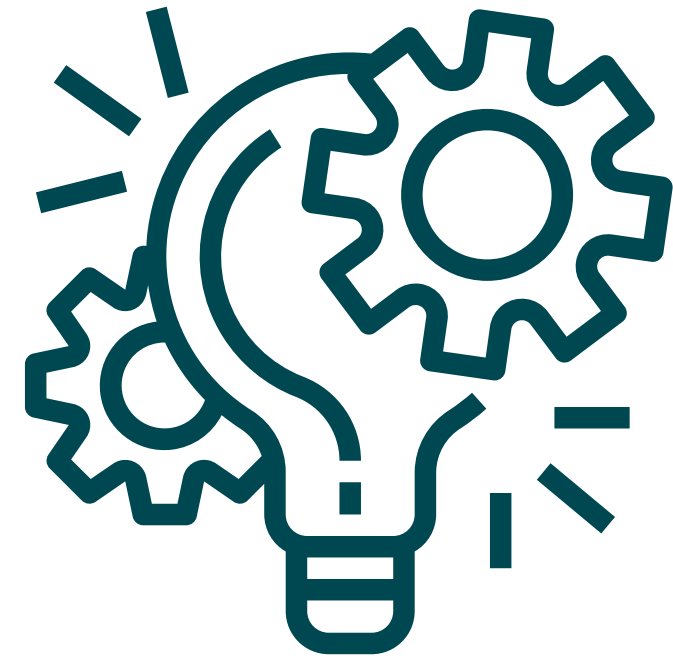


EAGLES **AUTISM**
FOUNDATION



Bentley®

ALL ABILITIES S.T.E.M CLINIC

PRESENTED BY

BENTLEY SYSTEMS



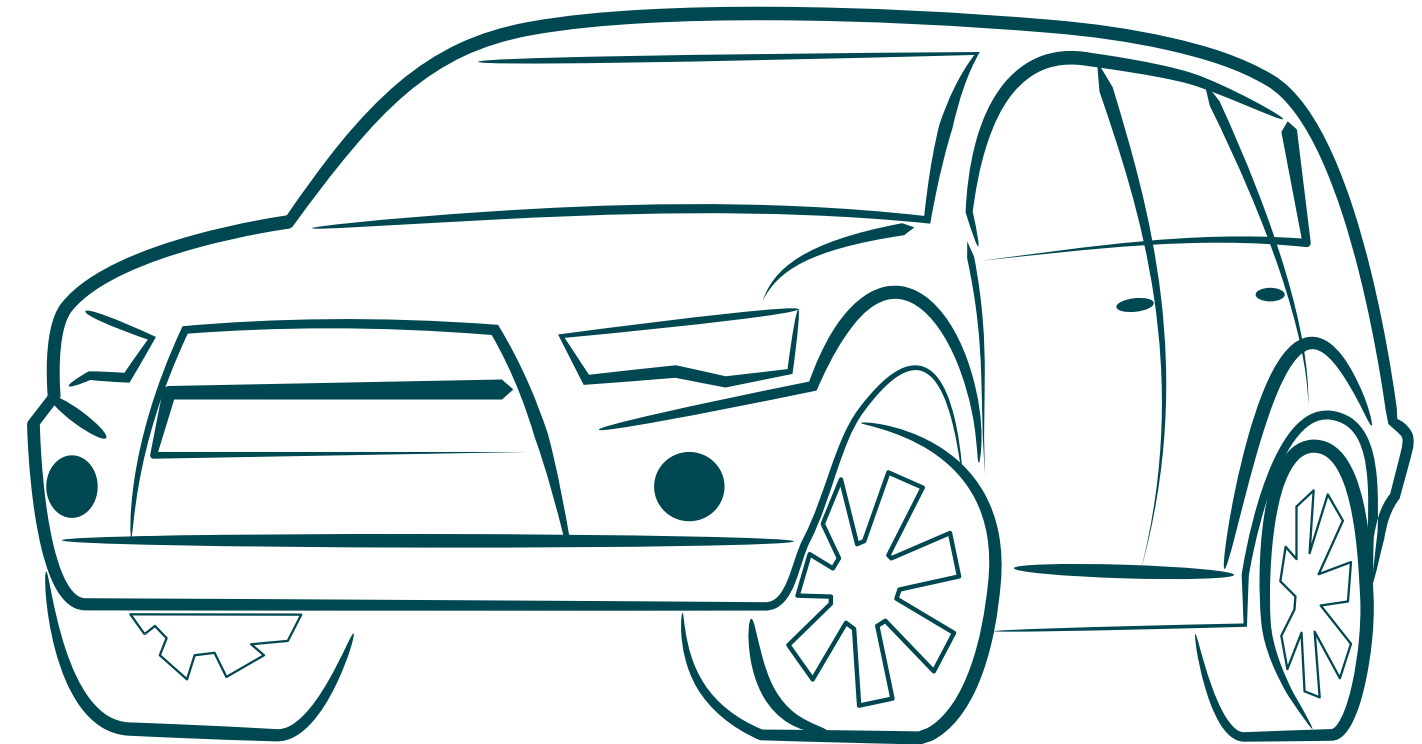
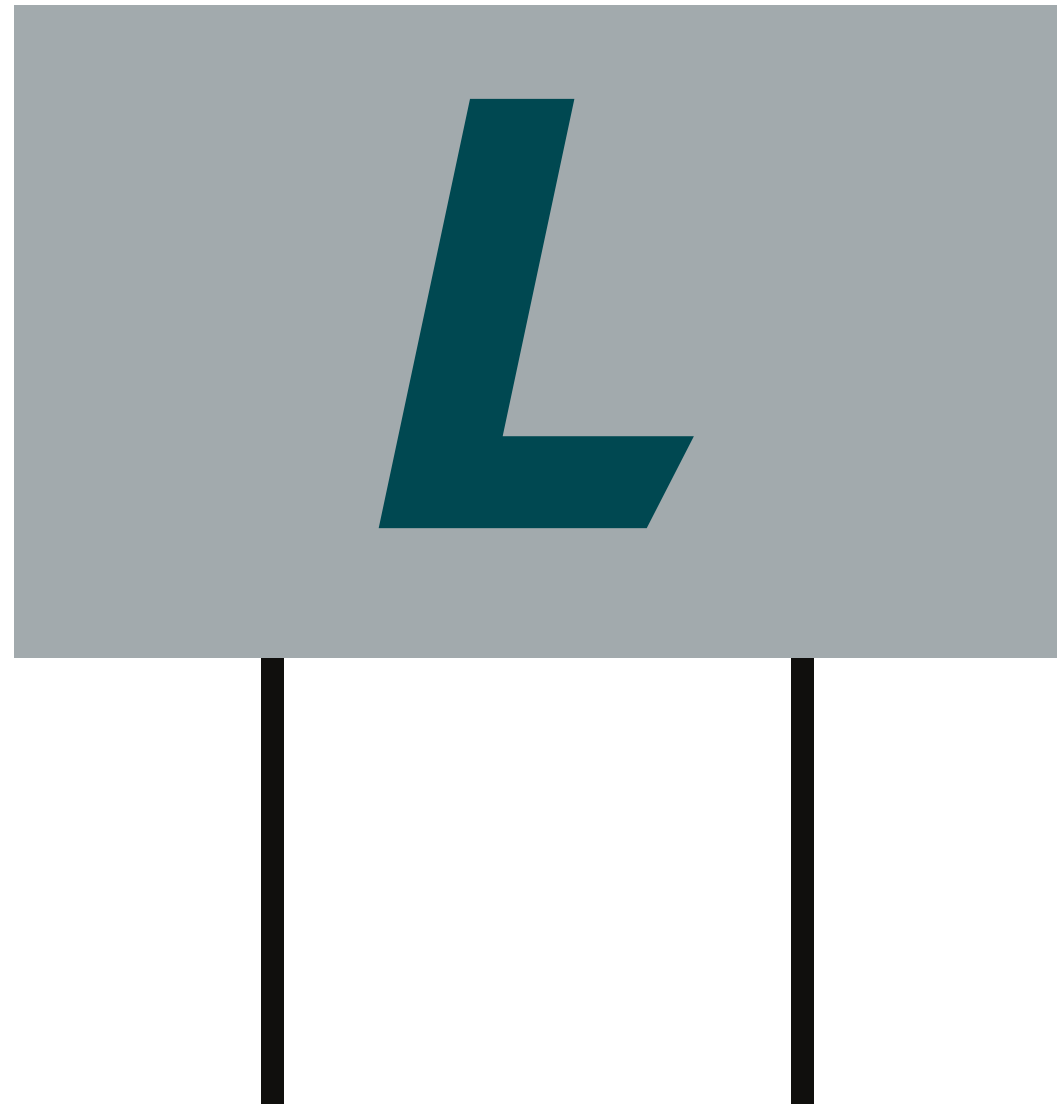
**TODAY, I AM GOING TO THE ALL ABILITIES S.T.E.M
CLINIC PRESENTED BY BENTLEY SYSTEMS AT LINCOLN
FINANCIAL FIELD TO LEARN AND BUILD.**



**DO NOT FORGET TO WEAR MY EAGLES GEAR, I
WILL ALSO GET A CLINIC T-SHIRT!**



**WHEN I ARRIVE TO THE STADIUM I WILL PARK THE CAR IN
L LOT.**



DOORS WILL OPEN AT 5:00 PM AND CHECK-IN BEGINS.



I WILL RECEIVE MY GROUP ASSIGNMENT AND SIT IN MY SPOT.



**IF I NEED A BREAK, I CAN ASK AN EAGLES AUTISM
FOUNDATION STAFF OR VOLUNTEER.**



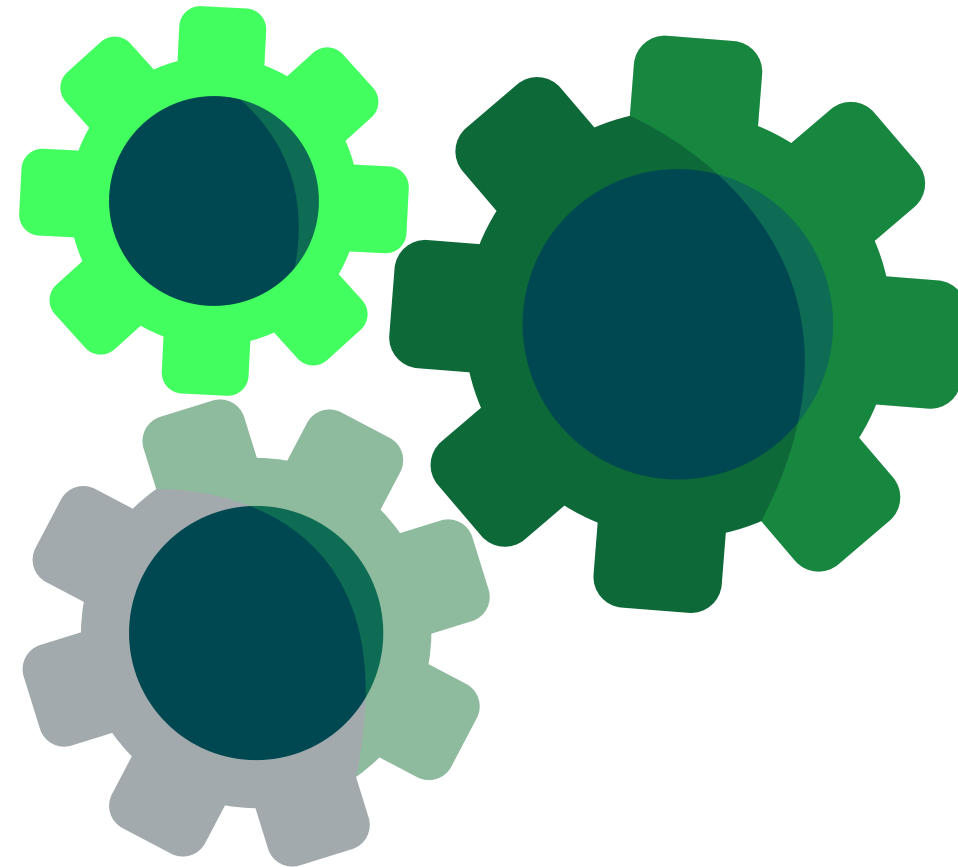
I WILL LISTEN FOR DIRECTIONS.



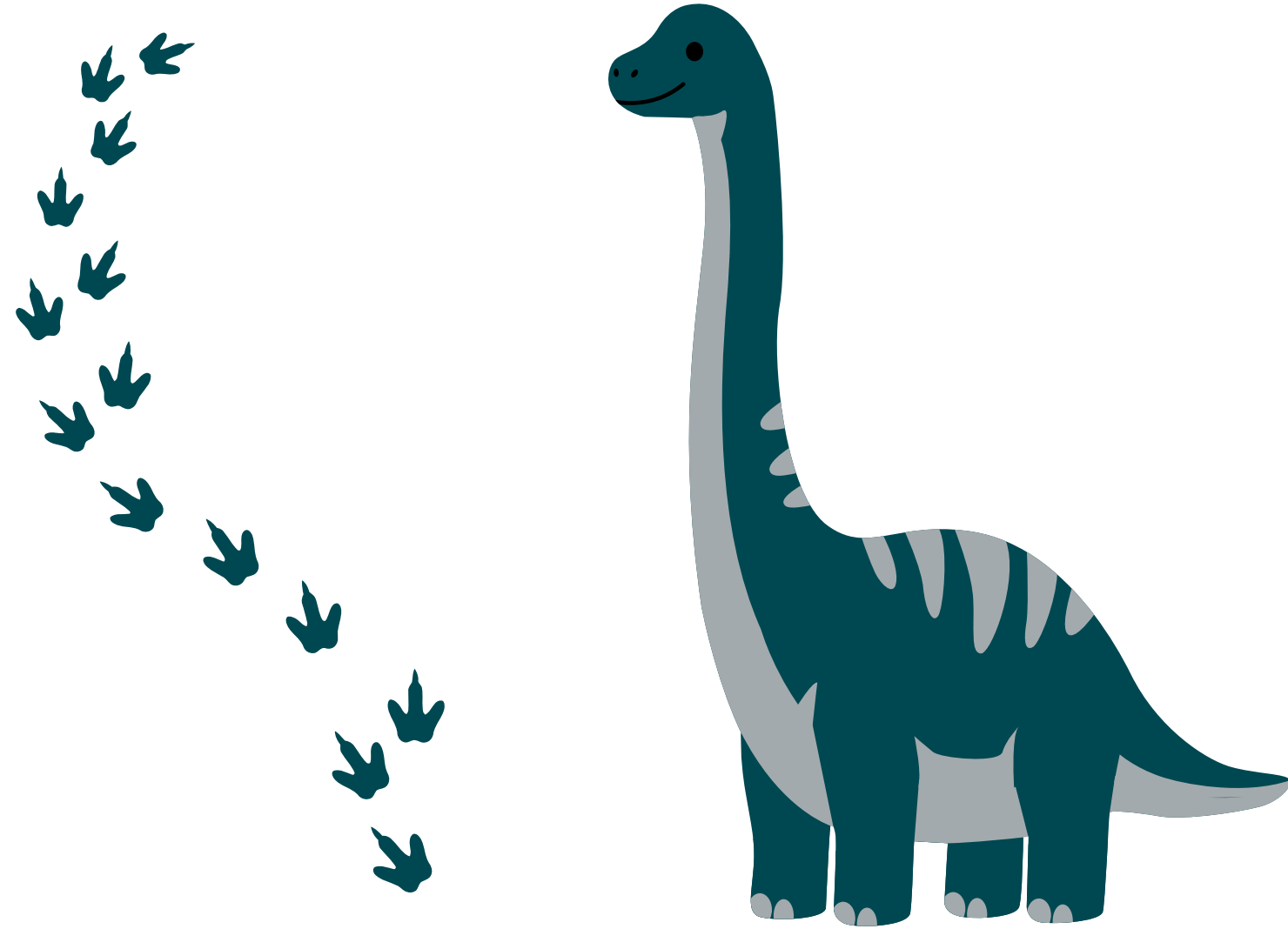
I CAN TALK TO MY GROUP MEMBERS.



I WILL WORK ON DIFFERENT PROJECTS IN 4 DIFFERENT STATIONS THROUGHOUT THE NIGHT.



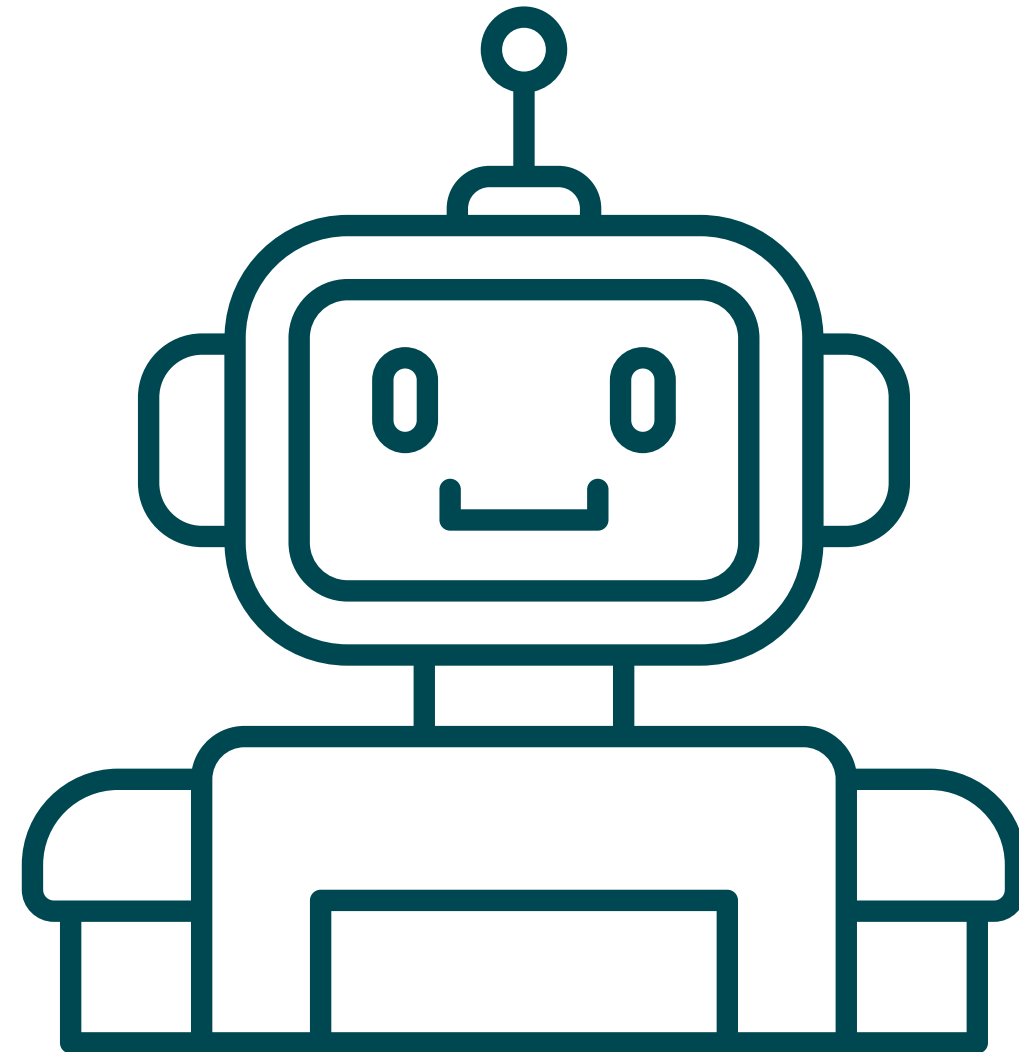
I WILL WORK WITH 3D IMAGING WITH DINOSAURS.



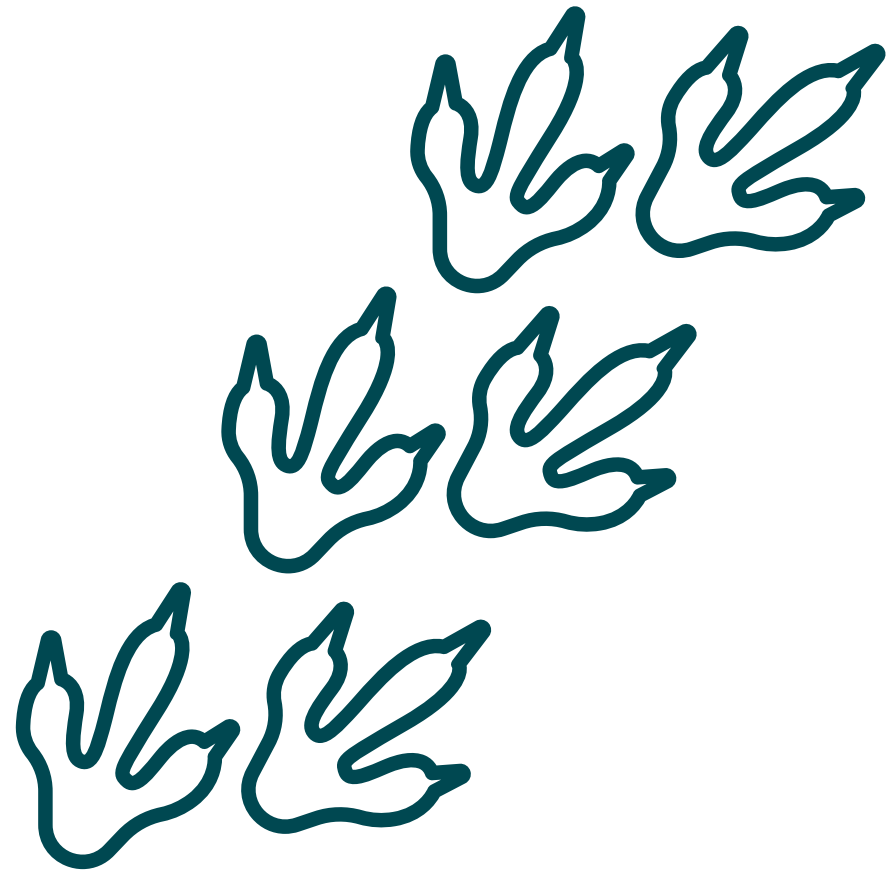
I WILL LEARN ABOUT BRIDGE BUILDING TECHNOLOGY.



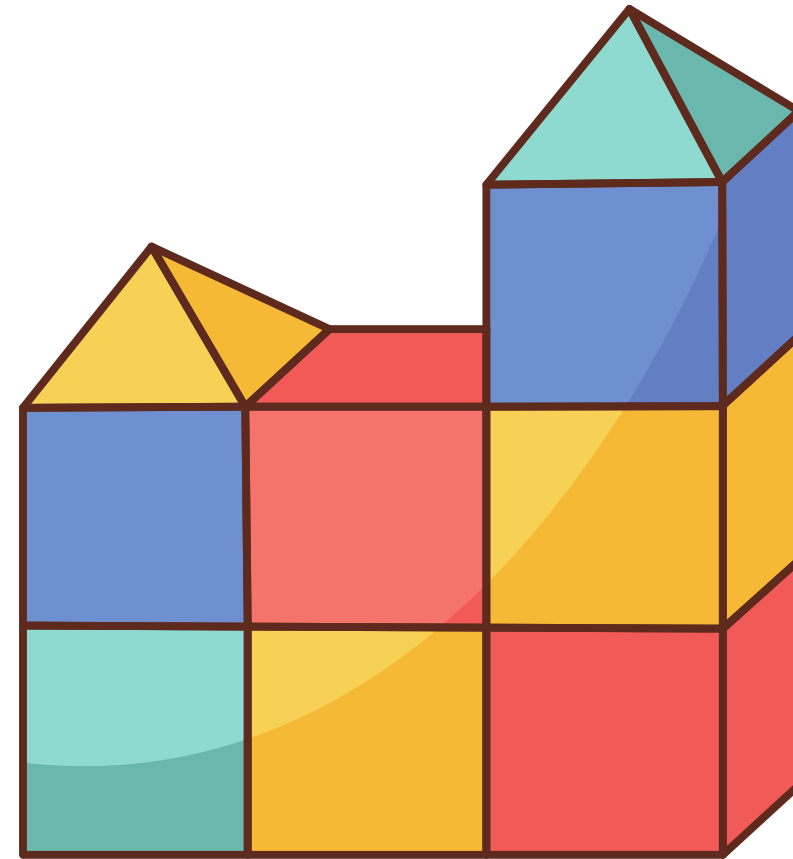
I WILL LEARN ABOUT AND PLAY WITH ROBOTS.



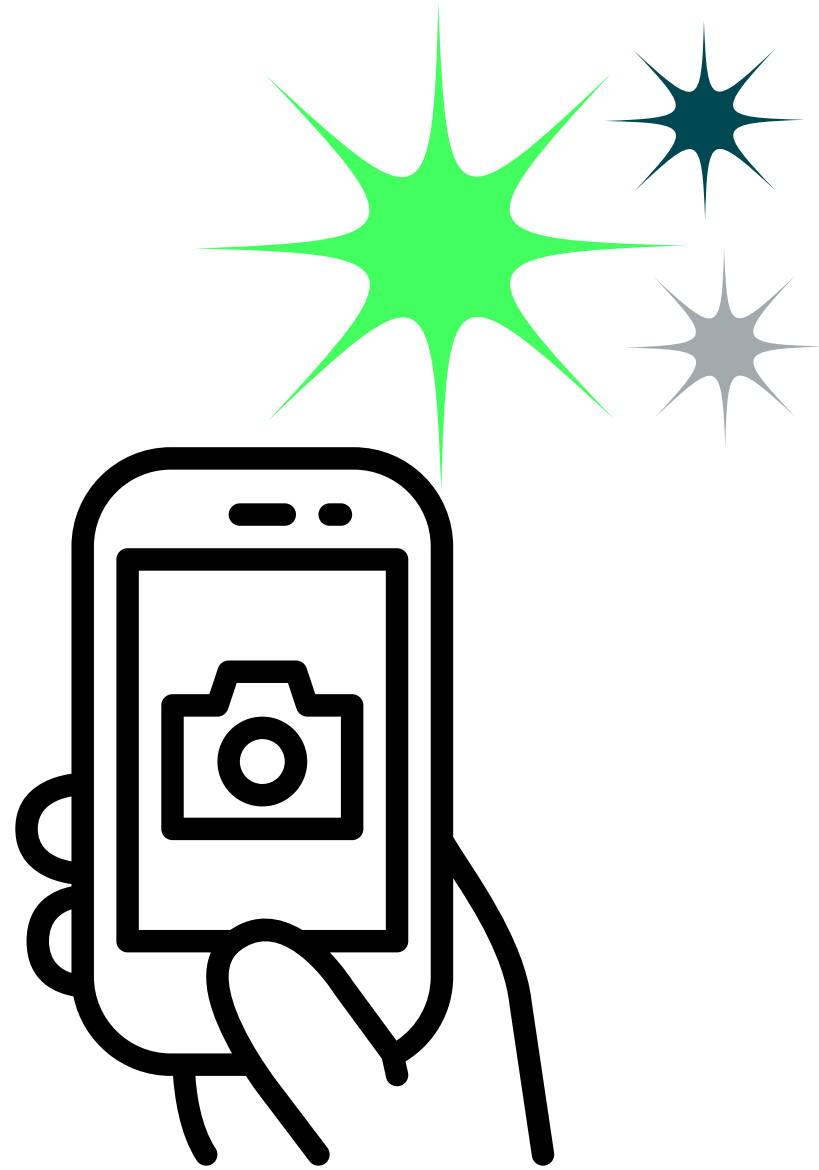
I WILL LEARN ABOUT AND LOOK AT DINOSAUR FOSSILS.



THERE WILL ALSO BE ALTERNATE ACTIVITIES IF I NEED TO TAKE A BREAK FROM THE MAIN PROJECTS.



ONCE MY PROJECTS ARE COMPLETE, I CAN TAKE PHOTOS WITH THEM IN THE FINAL SHOWCASE.



HAVE FUN CREATING! GO EAGLES!

