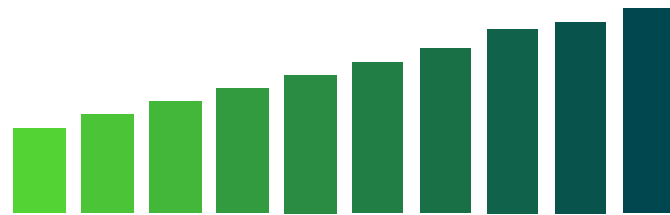




EAGLES AUTISM FOUNDATION 2024-2025 IMPACT REPORT

The background is a solid green color with several thin, white, diagonal lines running from the top-left towards the bottom-right. The lines are spaced out and vary slightly in angle, creating a sense of motion or a modern, abstract design.

**AWARENESS
TO ACTION**



EAGLES **AUTISM**
FOUNDATION

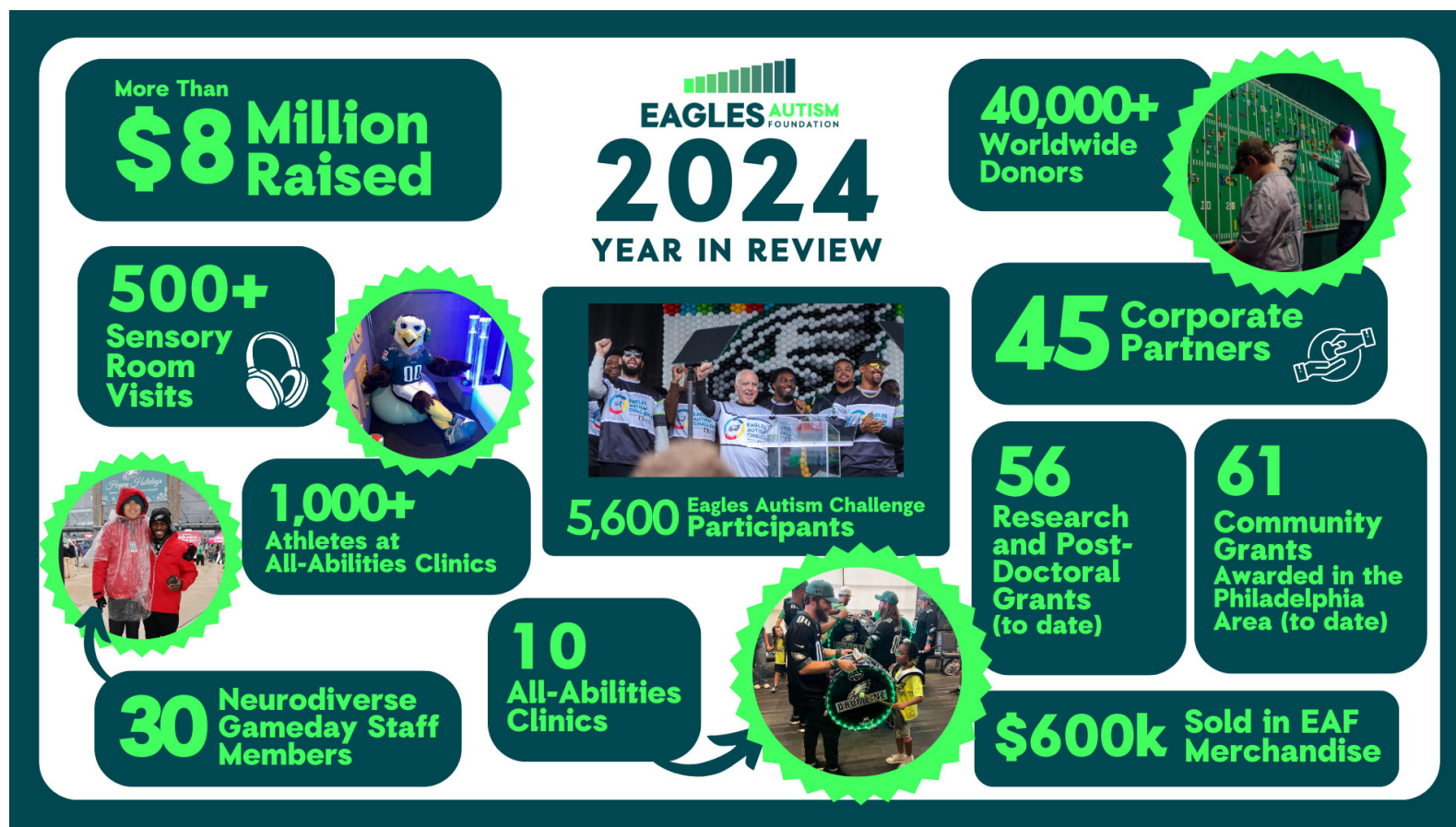
AWARENESS TO ACTION

Eagles Chairman and CEO, Jeffrey Lurie's vision for success has always extended beyond the football field. That dedication to leveraging the voice of the Eagles organization to impact the autism community has served as the driving force behind the Eagles Autism Foundation. Inspired by that commitment, members of the Eagles organization (players, coaches, staff), fans, volunteers, corporate partners, and the broader EAF community continue to tap into their own passions and voices to raise record-breaking funds (more than \$30 million with 100% of which go to innovative research and care programming), while making emotional connections and societal advancements through advocacy.

Whether at Lincoln Financial Field or NovaCare Complex (for events such as Public Practice, Eagles Autism Challenge, Huddle Up for Autism, All Abilities Clinics), or in the region (for events such as Barefoot Country Music Festival, Eagles Autism Foundation Golf Outing, player events), around the country (at the Super Bowl), or around the world (holding a clinic in Brazil and hosting a scientific symposium with 80 local researchers), each day we see 'awareness to action' put into practice to foster inclusion, provide resources, and create greater possibilities for neurodiverse individuals and their families.

What began as a one-day event in Philadelphia, seven years ago, has evolved into a powerful year-round, multi-national movement - rooted in the belief that working together, we can drive sustainable change in the lives of those in the autism community.

"Football should be enjoyed by everybody. If they're like you or not like you, you welcome them." - Jeffrey Lurie







JEFFREY LURIE

Dear Eagles Autism Family,

Super Bowl LIX was a defining moment for the Philadelphia Eagles, a victory that represents not only our commitment to excellence on the field but also our dedication to making a lasting impact off of it. As we celebrated our championship, we were reminded that true success is measured not just by trophies but by the lives we touch and the communities we uplift. Our commitment to the autism community has never been stronger, and this victory only fuels our drive to expand our efforts and create even greater change.

When we held the first Eagles Autism Challenge in 2018, it was a one-day event with a big dream: to bring people together to raise funds and awareness for autism research and care. From those early steps to opening the NFL's first in-stadium sensory room in 2019, we laid the foundation for a legacy of inclusion, innovation, and impact. Since then, the Eagles Autism Foundation has grown into a year-round, global movement that not only creates meaningful opportunities in safe, empowering spaces but also raises critical funds to support groundbreaking autism research and care programs.

From the start, my vision of success for the Eagles extended far beyond the football field. True success is measured by the lives we touch, the opportunities we create, and the lasting change we inspire. Through the Eagles Autism Foundation, we are proving that many of the most meaningful victories happen off the field—and this is what winning truly looks like.

In addition to raising a record-breaking \$8.1 million through the 2024 Eagles Autism Challenge, totaling \$30 million raised since inception, we witnessed the incredible power of our community coming together—both in our Super Bowl journey and in our commitment to autism research and care. The momentum from our championship win strengthens our ability to reach new heights, ensuring that our platform continues to drive inclusion, awareness, and groundbreaking advancements in autism support.

At the heart of our efforts is the belief that with the right support, families can not only meet the challenges autism presents but also expand their loved ones' potential. The Esquibel family's story, for example, shows how opportunities like our All Abilities Clinics can transform lives and open doors to new possibilities. Every initiative we undertake reflects this commitment to building a world where neurodiverse individuals feel supported and empowered to succeed.

What makes this movement so extraordinary is the strength of our Eagles Autism Family. Together, we have turned a single event into a powerful force for inclusion, awareness, and progress.

As we celebrate this championship season, we are reminded that the greatest victories happen when we lift others up. Together, as the Eagles Autism Family, we are turning this moment of triumph into a movement that changes lives. Thank you for being part of this journey—one that proves our greatest wins are the ones that make a difference beyond the game.

With heartfelt gratitude,

Jeffrey Lurie
Chairman and CEO, Philadelphia Eagles

RYAN HAMMOND

When we meet the greatest needs, everyone is able to feel welcome and best be served. Providing inclusiveness opens up possibilities, serving as a springboard for opportunities in other areas of someone's life. From recreation to entertainment to employment, our aim is to widen the horizons of potential for our community so they can achieve beyond their dreams. When we mobilize our team, we mobilize our mission.

I'm so proud of how our EAF community continues to grow, expand, and thrive, building a community of

compassion to make a difference. We celebrate our differences and our special abilities. Our players, coaches, staff, partners, and community members leverage their passions to raise funds and awareness, to take action. What started with (and continues to be driven by) the vision of Jeffrey Lurie, grows exponentially each year fueled by the power of connectivity and dedication of our EAF community to have transformational impact in autism research and programming. Under Jeffrey Lurie's leadership, our collective action is producing scientific

and societal results to change the culture and lives. There is no limit to what can be accomplished.



Ryan Hammond
Executive Director of Eagles Autism Foundation



SUPER BOWL LIX

Everywhere the Eagles and Eagles Autism Foundation are, everyone is included and Super Bowl LIX was no exception. From the Send Off Party at Lincoln Financial Field to the Super Bowl Experience and the game in New Orleans, back to Broad Street for the parade, the needs of all were considered with resources including visual schedules, sensory resources, quiet spaces, kits, and activities, allowing all fans to be able to experience the special moments with our team that will be cherished forever.

Send-Off Party

10,000 people sent the team off in style at Lincoln Financial Field, with tickets benefitting Eagles Autism Foundation. Fans were treated to special performances by the Eagles Cheerleaders, the Drumline and DJ Diamond Kuts.

All Abilities Clinics - Football and Cheer

Eagles Autism Foundation, in collaboration with KultureCity and the NFL, hosted All Abilities Clinics during special Sensory Hours at the Super Bowl Experience at the Ernest N. Morial Convention Center in New Orleans, with more than 450 attendees. The event included appearances from SWOOP and the Eagles Cheerleaders.

"The Eagles Autism Foundation, led by the vision of Jeffrey Lurie, to not only raise millions of dollars, but to be able to be a model for inclusion, doesn't stop at Lincoln Financial Field. It really carries through wherever the team is on the ground. Whether it was in Brazil, how we started the season with All Abilities Clinics and a Science Symposium or going to the Super Bowl, we will be mobilizing and ensuring that all fans have access to resources that they can come to expect to receive at Lincoln Financial Field," Executive Director of Eagles Autism Foundation Ryan Hammond said.

"We're very excited to partner with the NFL and KultureCity, who are obviously long-standing partners of the foundation, to not only provide dedicated sensory hours on Thursday, February 6, to create a more inclusive experience for the autism community and others with sensory differences, but to mobilize and activate our all abilities clinic for the local community."

KultureCity, a nonprofit organization which trains staff and certifies venues which have sensory-inclusive modifications, helped to provide 1,200 sensory bags that were co-branded with Eagles Autism Foundation.

"We are proud to partner with the Philadelphia Eagles to champion sensory accessibility inclusion at the Super Bowl, ensuring that every fan, of all abilities, can fully experience

the excitement of the game," said Uma Srivastava, Executive Director of KultureCity.

"Integrating sensory accessibility and inclusion throughout the Super Bowl footprint ensures that every fan, regardless of sensory needs and ability, can fully experience the excitement, energy, and joy of the festivities. Everyone deserves to be part of the moment."

During the event, students from Tulane University and LSU, along with members of the Eagles community, including players' significant others, were onsite volunteering for the All Abilities Clinic. The students from Tulane and LSU had been through virtual training with Eagles Autism Foundation Board Certified Behavior Analyst in preparation for the clinics. Through this effort, there will be a lasting impact as the trained volunteers can now help others and become ambassadors for the autism community.

The clinics consisted of a Football Clinic featuring wide receiver, running back, agility, defensive back, and quarterback stations. There was also a Cheer Clinic, where participants were able to learn a cheer routine with the help of Eagles Cheerleaders.

Eagles Autism Foundation has continued to contribute to the autism world, just recently announcing 53 projects specializing in cutting-edge autism research and care will receive \$8.1 million in funding. The grants were a direct result of the proceeds raised by participants from the 2024 Eagles Autism Challenge, in addition to other foundation-related fundraising initiatives throughout the year.

Since 2018, 169 research projects and community grants have been funded by the Eagles Autism Foundation.

"It just so happens that some of our community grants, locally, have affiliations in New Orleans. So, we were able to reach out to the Special Olympics to ACEing Autism and also Easter Seals and invite their communities locally to join us at the NFL Experience and the All Abilities Clinics," Hammond said. "We provided not only complimentary tickets through the foundation for NFL experience but also

helped provide transportation for those that may have needed it to be able to participate. And we're excited to welcome the local community into the Eagles Autism Foundation family."

Sensory Resources

In partnership with Kulture City, 1,200 Eagles co-branded sensory bags (that included Sensory Swoop dolls) were available to attendees at Super Bowl LIX! The game also featured two Sensory Rooms at Caesars Superdome, along with a visual schedule created by the Eagles Autism Foundation.

Super Bowl Surprises

EAF had the distinct honor of surprising deserving members of the community with tickets to Super Bowl LIX. Annette Schuster, co-captain of team Mothers Solving Puzzles, along with her son Jeffrey and their family were surprised by Eagles Chairman and CEO, Jeffrey Lurie with tickets to the game. The team raised more than \$150,000 this past year. While in New Orleans, Eagles superfan Copeland Spires was presented tickets to Super Bowl LIX from the Eagles Autism Foundation and KultureCity. These families truly encompass what it means to be part of the Eagles Autism Foundation family, and the entire Eagles organization is grateful to share this historic victory with them.

Parade

Sensory resources, including a sensory-friendly viewing area, the Mobile Sensory Unit presented by the Children's Hospital of Philadelphia, sensory bags, and a visual schedule, were available to help all fans enjoy the parade. Just as the Eagles commitment to EAF is prominent in the endzone at Lincoln Financial Field, all buses going down Broad Street had EAF branding.



EAGLES AUTISM CHALLENGE

The 7th annual Eagles Autism Challenge (EAC), presented by Lincoln Financial, saw record-breaking participation and fundraising, reflecting the exponential growth of this initiative in Philadelphia, across the country, and globally. Thanks to the participation of 5,600 participants and over 38,000 donations this year, EAC raised over \$8.1 million with 100% of the participant-raised funds going towards autism research and care programs.

Since the inaugural event in 2018, the Eagles Autism Challenge has blossomed into a powerful force, raising over \$30 million through nearly 160,000 donations. This growth is a testament to the unwavering support of the entire Eagles community, making it a year-round initiative we can all be proud of.

The exciting weekend began with the Friday Night Kick-Off Party in the Hyundai Club at Lincoln Financial Field

where individuals could enjoy food, live music, and other fun activities before the main event the next day.

The main event on Saturday offered something for everyone. The day began at Lincoln Financial Field and took participants on a scenic journey around the City of Philadelphia. Participants could choose from two cycling routes, the Wawa Junior/Shorti 10-Mile Ride and the Wawa Classic 30-Mile Ride, or take part in the FreedomPay 5K Run/Walk or West Sensory Walk. All five routes ended at the 50-yard line at Lincoln Financial Field, where participants enjoyed an on-field celebration, family-friendly activities, and an awards ceremony with special guests. The presence of Eagles players, coaches, front office, alumni, legends, cheerleaders, and of course Sensory SWOOP added an extra layer of excitement, making it an amazing experience for everyone.



Rookie Cooper DeJean enjoying his first Eagles Autism Challenge with the members from the EAF community!



SINCE FIRST YEAR

42 countries

160,000
donations

\$30 million+
raised

2024

5,600
participants

38,000
donations

\$8.1 million+
raised



Head Coach Nick Sirianni celebrating the Eagles Autism Challenge after participating in the 5k walk with his family.

COMMUNITY-DRIVEN PHILANTHROPY

The exponential growth and success of Eagles Autism Foundation is only possible due to the empowerment and ownership by our EAF community. Each person- from players to coaches to significant others to individuals and families- has taken on the mission as their own, becoming advocates and champions within their networks. All individuals leverage their platform and passions with a shared sense of transformative impact to change lives together.



WINTERFEST

RAISED APPROXIMATELY \$50,000

Although it was cold outside February 2024, there were plenty of warm feelings inside as people gathered at The Inlet North Wildwood for Winterfest to benefit EAF. Attendees had the opportunity to meet Brandon Graham and the Eagles cheerleaders while enjoying great music and food.



Sensory Swoop, holding his Sensory Swoop doll, at The Inlet North Wildwood as the crowd gets ready to see Brandon Graham.



Fred Johnson and Jordan Mailata serving up drinks and signing autographs as they support their fellow offensive lineman's fundraiser!

JURGY LAUNCH

RAISED \$3,500

In May, 2024, Cam Jurgens launched his brand of beef jerky - Jurgy, at Chickie & Pete's. Inspired by the work and commitment of veterans before him, Cam looked to make his own mark, by hosting his first fundraising event, with all proceeds benefiting EAF. Teammates, including Jordan Mailata, Landon Dickerson, Fred Johnson, and many more joined serving as celebrity bartenders, signing autographs, and taking pictures with passionate fans.



LAGOS SHOPPING

RAISED \$10,000

Also in May 2024, Landon Dickerson and his wife Brooke (who is involved in a variety of EAF events), hosted a private shopping event at Philadelphia-based jeweler LAGOS. Attended by a number of Landon's teammates, a percentage of sales, along with a raffle, benefitted the foundation.



Landon and Brooke Dickerson join Ryan Hammond, Kate Lagos, and Steven Lagos, as they commemorate a elegant night of shopping and raising money for EAF.



Britain Covey and EAF Gameday Staff member Griffin get ready to seek thrills on Dorney Park's Iron Menace!

DORNEY PARK RIDE FOR A CAUSE

RAISED \$50,000

Eagles Autism Foundation is known for many firsts. It was proud to be the first recipient of Dorney Park's Iron Menace Ride for a Cause in April 2024. Paying homage to the industrial history of the Lehigh Valley, the Iron Menace is the Northeast's first dive roller and first of its kind with a tilted loop inversion among its four inversions. Fans who purchased the special package (with 100% of proceeds benefiting EAF) had the chance to be among the first to experience the coaster's 160-foot-high, 95-degree drop with speeds up to 64 mph, as well as meet safety Reed Blankenship and wide receiver and punt returner Britain Covey, Eagles cheerleaders and SWOOP. Popcorn for the People were onsite selling their delicious products and attendees were able to purchase EAF merchandise.

GREEN IS THE HEART INSPIRED

RAISED \$96,000

Eagles fans, arts and culture enthusiasts, autism supporters, and the community experienced a special exhibit at the award-winning Arch Enemy Arts gallery in Philly's historic Old City District in April 2024. Green is the Heart Inspired exclusively highlighted Eagles-themed masterpieces.

Inspired by the gameday poster series the Eagles have produced for the past five seasons, the exhibit displayed the work, in a variety of mediums, of 35 emerging and established artists from the Greater Philadelphia region, including some who identify as neurodiverse. Robert Schmus displayed their work "Sunday on the Ben Franklin Parkway"; Nick St. Clair presented their piece "The Philadelphia Eagles Autism Poster"; and Joseph Roach exhibited their art "Eye of the Eagle". The high sensory, crowded environment of an exhibit opening could be overwhelming for anyone, and especially someone who is neurodiverse. Community with the other artists and the support of the attendees - for both the art and the artists, created a welcoming, safe space.

Senior graphic designer Matthew Schwenk was interested to see how artists (some of whom had never

done work in sports) would interpret how the Eagles matter to Philadelphia. "It was amazing to see the avenues they went down when they started thinking about this", noted Schwenk. All 35 original pieces, curated by the artists themselves, were auctioned with all proceeds benefiting the Eagles Autism Foundation.

"There are so many characteristics that set Philadelphia apart," said Ryan Hammond, Executive Director, Eagles Autism Foundation. "We know how much this City loves its sports teams, but it is also the rich history, cultural diversity, and inclusiveness that make Philadelphia truly unique. We are excited to celebrate the intersection of Eagles football and Philly's vibrant art scene with this new exhibit. This will serve as a great opportunity to honor our team's history, showcase the talented artists in our community, and raise important funds for autism research and care programs."

Fans received an exclusive sneak peek at the gala with a VIP event and silent auction on Thursday, April 11, which included early access, meet-and-greets with the artists and Eagles celebrities, a custom Eagles print poster, and a premium selection of hors d'oeuvres and refreshments.



From iconic Eagles symbols to fan portraits, Green is the Heart Inspired featured a spectrum of art.



The Creation of Adam
E. Spillane, 1984
Oil on canvas, 18 x 24 inches
Gift of the artist to the University of California, San Diego
Museum of Art, 1985



The Creation of Adam
E. Spillane, 1984
Oil on canvas, 18 x 24 inches
Gift of the artist to the University of California, San Diego
Museum of Art, 1985



BAREFOOT COUNTRY MUSIC FEST

RAISED MORE THAN \$56,000

For the second year, more than 35,000 fans attending the Barefoot Country Music Fest on the beach in Wildwood, NJ had a more accessible and inclusive experience due to the partnership with Eagles Autism Foundation. Player Landon Dickerson and his wife Brooke returned for the second year to the event. The event kicked off with the Pre-Party at Seaport Pier, benefitting EAF, with Dillian Carmichael, Warren Montgomery Band, and DJ Slim McGraw, along with the Eagles cheerleaders, drumline and SWOOP. Over the four days, fans enjoyed performances from more than 40 musicians including Luke Bryan, Keith Urban, Kane Brown, Old Dominion, Jake Owen, and War & Treaty.

Once again EAF supplied sensory bags (including noise canceling headphones and sensory toys) and visual schedules for guests. Providing an oasis of calm and a safe space in what can be a chaotic environment for everyone, and even more so for those with sensory needs (such as autism, anxiety, PTSD, migraines and Parkinson), EAF partner KultureCity returned with its Sensory Activation Vehicle. This mobile sensory room helped fans of all abilities enjoy their entire experience. In addition to a portion of ticket sales benefitting EAF, and exclusive merchandise such as EAF cowboy hats, special experience packages and signed memorabilia were available through an exclusive auction provided funding to EAF. The foundation also brought trained volunteers from the EAF College Program to work the sensory vehicle and the merchandise stand.



Landon and Brooke Dickerson, along with Eagles Cheerleaders, met with Bret Michaels before his performance at Barefoot Country Music Fest.

TEAM 62 OCEAN DRIVE FUNDRAISER

RAISED ALMOST \$900,000

For the fourth year in a row, Eagles fans took over Sea Isle City, NJ, for the Team 62 fundraiser benefiting the Eagles Autism Foundation. What began as just a guest bartending meet-and-greet with Jason and Kylie Kelce at The Ocean Drive's Sandbar & Grill four years ago has grown into a two-day fundraising event that spans multiple locations in Sea Isle City.

The event started with The Eagles Takeover at Excursion Park, just a block away from Ocean Drive. It showcased the Eagles Drumline, Cheerleaders, and Football All-Abilities Clinics. For the first time in the fundraiser's history, a family-friendly component was included in the festivities, allowing Eagles fans of all ages to participate.

Following The Eagles Takeover, fans aged 21 and over enjoyed guest bartending at The Ocean Drive. Current players Sydney Brown, Jake Elliott, Landon Dickerson, Dallas Goedert, and Avonte Maddox, along with Eagles legends Beau Allen, Connor Barwin, Fletcher Cox, and Todd Herremans, served drinks and played games with fans. Big Dom DiSandro, Senior Advisor to the General Manager, also made an appearance, serving drinks and taking pictures with fans. The guest bartending event expanded this year to include a second location, Patty's Green, next to Ocean Drive, where fans could also be served by players.

The final event of the two-day experience was the second annual New Heights Beer Bowl at the Yacht Club of Sea Isle City. Fans had the opportunity to have a front row seat in the live audience of this New Heights special event. They also enjoyed the boat parade, sponsor activations, and a VIP experience to benefit EAF.

The Team 62 fundraiser in 2024 raised \$865,000, surpassing 2023's total of nearly \$500,000.



Jason Kelce and friends soaking up the sun while raising funds for innovative autism research and care programs at the Team 62 Ocean Drive Fundraiser.

STOUTLAND UNIVERSITY

In its third year, Stoutland University's merchandise featured two crewnecks for fans to rock this season. The phrase "Hungry Dogs Run Faster" remains the inspiration for Coach Jeff Stoutland's apparel line and with the help of fans, this collection has raised over \$200,000 in three years.



SAQUON BARKLEY HURDLE T-SHIRT

With a graphic designed by a member of the Eagles social media staff, the Saquon Barkley reverse hurdle t-shirt raised over \$67,000 and counting for the EAF community. EAF Neurodiverse Gameday Staff proudly fulfilled these orders for fans across the country!



BIG DOM

As "Big Dom" DiSandro continues to make an impact in the Eagles organization, his support of the Eagles autism community also continues to flourish. This year, Big Dom merchandise raised over \$2,000 for EAF.



ESQUIBEL FAMILY

When the Esquibel family (mom Andrea, dad Dustin, sister Biana, brothers Andrew, Tim, and Ben) moved from Kansas to Hershey, PA to become house parents for eleven girls at the Milton S. Hershey School three years ago, they knew that it would be a big transition. What they didn't know was that it would end up changing their lives in better ways than they could have ever imagined. There had been struggles with their youngest son Ben, whom they consider their miracle child, in school, socially, and behaviorally. In Hershey, they were able to connect with the right doctor and counselor, and receive the proper autism diagnosis (items they consider the tools in their toolbox), but the biggest impact came from seeing a Facebook post for a 2023 EAF All Abilities Drumline Clinic.

Ben's outlet has always been drumming, which he plays by ear - not by reading music. He can hear and feel a song and then play it. The moment that the Esquibel family walked into the Drumline event, and the EAF staff asked Ben if he wanted to play his own drum, something opened up in him for the first time in his 16 years, which has continued to grow. At the end, Ben even took the bold step to ask a question about how old you have to be to join the drumline - just one more year for him now! Ben loves being able to share his music with others, believing it unites us as one. From there things have just taken off, with the family being embraced by the Drumline captain along with the entire Drumline, regularly attending events throughout the year. Ben was even being featured on the EAF takeover of the TODAY Show.

The Esquibels consider EAF family and in just a year have built strong ties throughout the organization and with the community of families. Andrea and Dustin have been advocates for neurodiverse children and families for decades through their careers and have prompted Ben to be a self-advocate. They believe that the support and love he receives at EAF has "opened doors for Ben, opened his heart, and given him a purpose to advocate for himself and others like him -

or not like him as he embraces everyone's differences." Ben feels that EAF "brought out a side of me that I may not have had and has helped me to grow to be the person that I am". At his job at GIANT Food Stores, Ben advocated to wear an autism awareness pin. He bought himself a car (naturally Eagles green and named Eagle), and there have been improvements at school and in everyday interactions with others. Ben was extremely active in fundraising for his first Eagles Autism Challenge and Huddle Up for Autism - even contributing his own money. He also donated additional funds through the EAC Package Auction, where he and his family won special EAF shoes. It has provided another connection point for Ben's "sisters" in the house - getting excited over the fundraisers and secretly decorating the house in Eagles and EAF for his birthday.

With Ben opening up, others are able to recognize his wonderful personality and how special he is. One of the Eagles gameday staff asked when Ben would be coming to work with him, creating a possibility that Ben and his family hadn't previously considered - and for which he is now planning for. After having met Ben once previously, NBC10 reporter Siobhan McGill called out to him at the Eagles Autism Challenge, once again illustrating the powerful EAF family network.



The Esquibels are grateful to the Eagles for making EAF an organizational priority and for the evident extensive training of the staff, as well as their heart and passion. They are inspired to be present at as many events as possible and to spread the word about EAF wherever they go - grocery store, airport, etc, proudly wearing their colors (including an EAF tattoo on Dustin's leg) - so that others can experience what they have experienced. With all truly being welcomed, the Esquibel family has found that EAF creates new possibilities, providing a safe space where parents can find they belong, and their children can thrive, without limits. "EAF gave Ben his cape", says Dustin. "It unleashed his superpower."

With their hotel room having been booked for months, Andrea, Dustin, and Ben look forward to seeing everyone at this year's Eagles Autism Challenge. You won't be able to miss Ben's huge smile when the Drumline arrives.

EAGLES AUTISM FOUNDATION TODAY SHOW TAKEOVER

As an NBC producer counted down from five, a roar from the crowd and the sound of the Eagles Drumline could be heard on live television and in Rockefeller Center – one of the largest TODAY Show takeovers was underway.

To kick off Autism Acceptance Month, the Eagles Autism Foundation participated in a TODAY Show takeover in New York City to promote autism acceptance and the organization's All Abilities Clinics.

"One of the most important things is to show that you can create accessibility to families and not put limits on people," said Ryan Hammond, Executive Director of the Eagles Autism Foundation. "Presenting support, proactive resources, and a trained staff can really change someone's life."

Kylie Kelce, Senior Event Consultant for the Eagles Autism Foundation, joined Hammond for live hits with TODAY Show hosts Savannah Guthrie and Hoda Kotb during the hour-long takeover.

Hammond credited Kelce for providing this wonderful opportunity to the Eagles Autism Foundation, taking the spotlight off herself and shining it on the work that

the foundation does daily to provide for those on the autism spectrum.

One of the many activities that the Eagles Autism Foundation has available is its All Abilities Clinics.

The All Abilities Clinics – ranging from football to cheer to STEM and the Drumline – are built with resources and support integrated into the event structure to promote accessibility for all participants. The goal is to create an inclusive environment that offers an experience for individuals with special needs to participate alongside their peers.

"The lead is taken by Kiki (Kirsten Saraceni, Scientific Programs and Inclusion Initiatives Director for the Eagles Autism Foundation)," Kelce said. "She helps put together a place that is accepting and understanding and applies all the sensory needs that could possibly be met."

Many participants in the All Abilities Clinics will continue doing what they learned at the clinics in their daily lives, whether it be taking drum lessons or joining their high school cheerleading squad.







HUDDLE UP FOR AUTISM

MORE THAN \$260,000 RAISED IN 2024
MORE THAN \$1 MILLION RAISED
SINCE 2009

On April 21, the Eagles hosted their annual Huddle Up for Autism event at Lincoln Financial Field in recognition of Autism Acceptance Month. The event was designed for families with children on the autism spectrum and provided a sensory-inclusive experience. It featured live performances, photo opportunities, field activities, locker room tours, and special appearances by Eagles players, cheerleaders, and SWOOP. The event was a huge success, raising over \$260,000, surpassing the previous year's record total of \$139,708. All proceeds from the sensory-friendly event benefit the Center for Autism Research at Children's Hospital of Philadelphia.



Over 5,000 people attended this year's Huddle Up for Autism event at Lincoln Financial Field!

2024 NFL DRAFT

The 2024 NFL Draft in Detroit was an exciting time for Eagles fans as they eagerly awaited the selection of the team's future game-changers. The first night of the draft was highlighted by the selection of cornerback Quinyon Mitchell from the University of Toledo with the 22nd pick in the first round. The Eagles Autism Foundation was featured throughout this year's draft. Ojay Harris, a dedicated volunteer for EAF, took the stage in Detroit on the third day of the draft to announce the Eagles' fifth-round selection of Jeremiah Trotter Jr., son of the legendary Eagles linebacker. Additionally, Chaz Elliott and Tom Byrne, members of the Eagles' neurodiverse gameday staff, were chosen to represent EAF at the draft, enjoying a VIP experience and cheering the team's selections throughout the event. On Draft Night, fans in Philadelphia had the opportunity to support the Eagles Autism Foundation while celebrating the draft excitement with other Eagles fans at the 2024 Draft Party held at Lincoln Financial Field. Attendees could explore the EAF Yard Sale, where they could buy merchandise such as jerseys, shirts, hats, signed footballs, and much more. The Draft Party raised over \$20,000 for the Eagles Autism Foundation.



NEURODIVERSE GAMEDAY STAFF

Each year the role of the neurodiverse gameday staff continues to expand both in numbers (this year up to more than thirty people) and in responsibilities that extend beyond gameday. This year the staff sold Popcorn for the People at the EAF golf outing, participated in the Cities of Inclusion Summit, fulfilled the mailing Stoutland University and Saquon Barkley EAF shirt orders, as well as holiday gifts, and helped to select community program grant recipients. In addition to the opportunity to learn new skill sets, these activities provide for increased interaction and engagement for social interactions, as the gameday staff continue to develop their own community and body.



"THIS WAS MY FIRST YEAR WORKING FOR THE EAGLES AT LINCOLN FINANCIAL FIELD AND I LOVED WORKING WITH ALL THE OTHER POSITIVE EMPLOYEES," SAID DREW MCCONE, EAF NEURODIVERSE GAMEDAY STAFF MEMBER. "I ENJOYED BEING PART OF THE EAGLES AUTISM FOUNDATION BECAUSE OF THE RESOURCES AND THE STAFF THAT WORKS FOR THE FOUNDATION. THEY ARE KIND, ACCOMMODATING, AND INCLUSIVE AS WELL!"

EAGLES AUTISM FOUNDATION GOLF OUTING

\$600,000 RAISED IN 2024

ALMOST \$1.5 MILLION RAISED IN THREE YEARS

Golfers paired up with Eagles players (including Brandon Graham, Jason Kelce, Landon Dickerson, Jake Elliot, Saquon Barkley and Jordan Mailata), alumni (including Mike Quick, Ike Reese, Brian Westbrook, Brian Dawkins, Brent Celek, Ron Jaworski and Jon Runyan) coaches (including Nick Sirianni and Jeff Stoutland), executives (including Jeffrey Lurie, Julian Lurie, Howie Roseman) and other celebrities (including Rob McElheney, Ryan Howard, Larry Fitzgerald, Jalen Brunson, Jay Wright, Michael Collins and Merrill Reese) to enjoy a day out at Merion Country Club while

supporting the work of Eagles Autism Foundation. Much more than just a beautiful day out playing golf, the event meaningfully connects participants over the two days in learning about the impact that their donations - of time or money- have on autism research and care programs. A very special member of the Eagles autism community, Charlie, came in from Minnesota to join each group at the 13th hole. Groups had the option to utilize Charlie's golf skills with a tee off or putt. Demonstrating the power of sport, Charlie credits the game of golf for helping him

to connect more with people.

This year, neurodiverse Eagles gameday staff were on hand at the pairing party the night before serving as greeters, handing out gifts and selling Popcorn for the People. Making the pairings even more special was a performance by Clare Bowen and Brandon Robert Young.

Participants bidding on once-in-a-lifetime experiences and memorabilia through the online auction provided another opportunity to support EAF for those who didn't attend the outing.



Executive Vice President and General Manager Howie Roseman, Eagles Chairman and CEO Jeffrey Lurie, and Head Coach Nick Sirianni discuss the importance of the EAF Golf Outing at the pairings party.







PUBLIC PRACTICE

MORE THAN \$600,000 RAISED

On August 1st, nearly 50,000 fans gathered at Lincoln Financial Field for the Eagles' 2024 Training Camp Public Practice, presented by Independence Blue Cross. The Eagles' annual public practice gives fans from across the region the opportunity to get a first look at the team. Proceeds from the event directly benefited the Eagles Autism Foundation (EAF). Fans supported EAF through ticket purchases, buying merchandise from the Eagles Pro Shop and EAF Yard sale, participating in a 50/50 raffle, and buying concessions from the Popcorn for the People stand at Lincoln Financial Field. After Jason Kelce

retired from the NFL, Brooke Dickerson, the wife of right guard Landon Dickerson, took over organizing the wives' booth at the public from Kylie Kelce. Niki Malaita, wife of left tackle Jordan Malaita, joined Brooke and Kylie in selling merchandise as part of the fundraiser. This year's practice raised over \$600,000 for the Eagles Autism Foundation (EAF). Throughout training camp, players wore EAF patches on their jerseys, and for the public practice, these jerseys featured energy green numbers, representing EAF. The jerseys were later auctioned to raise additional funds for EAF.

RADIOTHON PRESENTED BY FIRSTTRUST BANK AND GREEN FAMILY FOUNDATION

\$550,000+ RAISED IN 2024

MORE THAN \$2.25 MILLION RAISED OVERALL

The 2024 Eagles Radiothon, presented by Firsttrust Bank and The Green Family Foundation, raised a record-breaking more than \$550,000. From Thursday, August 15 to Thursday, August 29, Eagles fans had the opportunity to bid on one-of-a-kind Eagles and 94WIP experiences, fan packages, and autographed items. All proceeds benefit the Eagles Autism Foundation's mission to raise funds for cutting-edge autism research and care programs. Additionally, fans could purchase an exclusive 2024 Eagles Radiothon t-shirt designed by Jason and Kylie Kelce. Eagles players, coaches, and executives called into 94WIP to promote their Radiothon experiences which included playing a round of golf with Saquon Barkley, "A Philly Special Christmas" card photo experience; designing a pair of sneakers with A.J. Brown; VIP QB1 experience

with Jalen Hurts; lunch and tour of the NovaCare Complex with Howie Roseman; VIP meet-and-greet with Jeffrey Lurie along with two tickets to an Eagles game; spending the day with Chief Security Officer Dom DiSandro.

"The support of Eagles fans, 94WIP listeners, and our partners enable us every year – through Eagles Radiothon – to pour even more resources into the autism community," said Ryan Hammond, Executive Director, Eagles Autism Foundation. "We continue to be amazed by the success of Radiothon, which is all thanks to our players, coaches, and staff for offering up some incredible experiences, 94WIP for leveraging their airwaves, Firsttrust Bank and The Green Family Foundation for their partnership, and of course, Eagles fans for their generous bids."



BRAZIL

Prior to the Eagles taking the field to play in the first-ever NFL game in South America, the organization made its mark in Brazil, with the Eagles Autism Foundation hosting a roundtable in São Paulo to discuss the state of autism research and care in Brazil. The roundtable was hosted as part of the Eagles' connection to the Brazilian community that had been growing throughout the week.

The panel for the discussion was comprised of Eagles Chairman and CEO Jeffrey Lurie and five Brazilian-based medical researchers who have backgrounds in genetics, neuroscience, child psychiatry, and molecular biology, among other represented areas.

"The mission of the Eagles Autism Foundation is to improve the lives of those affected by autism in every community around the world," Lurie said. "The research being conducted in Brazil is highly impressive and has the potential to bring new ideas, technologies, and resources to the table. We are excited to expand our efforts in South America and look forward to funding even more progressive forms of research that can help individuals and families everywhere."

At the event, Eagles Autism Foundation Executive Director Ryan Hammond announced that the organization will be supporting Brazilian-based autism research with a \$400,000 pilot grant. The grant will support basic and clinical research, studies concentrating on affected individuals and families, and diverse model systems.

The roundtable saw attendance from more than 80 members of the autism research and scientific community in Brazil.

"If we can shine a light on autism as we travel as the Philadelphia Eagles to Brazil and authentically include into our plans while we're there, I think that's really what the vision for Jeffrey is all about," Hammond said.

Those in attendance learned more about Eagles Autism Foundation and its mission along with how important it is to help continue to aid autism research and care across the world.

"If you made a donation in 2024, you'll personally be supporting this initiative. You play a part in our team's

history and something even more of a milestone for the foundation of supporting this effort and hopefully creating even more excitement and enthusiasm to do autism research in such a highly populated country," Hammond said.

Before the roundtable, the NFL hosted a community day event in São Paulo. The event featured children of São Paulo as the league has continued its efforts of growing the sport of flag football globally.

During the community day, athletes from Special Olympics Pennsylvania and Special Olympics Brazil were invited by the Eagles Autism Foundation to join the clinic with their peers. With the help of a translator, Eagles Autism Foundation provided training to all coaches/volunteers at the event, a visual schedule, and sensory bags.

The participants went through a rotation of skills and drills that were designed to show them a taste of NFL Flag and develop the important skills of the game. The participants also got to meet the Eagles' mascot, SWOOP, and the Eagles Cheerleaders.



Eagles Cheer and members from Special Olympics Brazil posing for a photo after the first international All Abilities Clinic!

EAF 50/50 RAFFLE

MORE THAN \$1.125 MILLION RAISED IN 2024 SEASON

The best way to support the Eagles Autism Foundation at any home Eagles games is through the 50/50 Raffle presented by WBE Line Services! Fans can purchase tickets with the chance to win half the proceeds of the raffle and the other half is donated to the Eagles Autism Foundation. This year, the 50/50 raffle generated the largest single-game jackpot to date, \$421,800, at the NFC Championship against the Washington Commanders.



Congratulations to Jason and Melissa Thompson on winning the largest EAF 50/50 jackpot, to date!

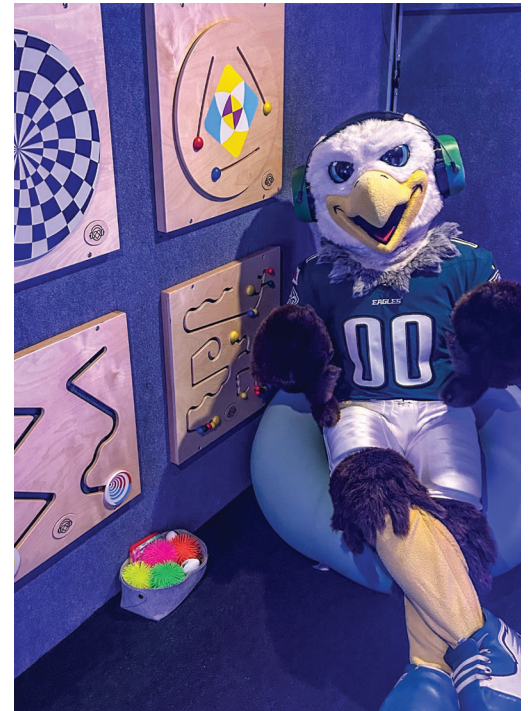
MY CAUSE MY CLEATS

Every year the NFL's My Cause My Cleats initiative allows players to visually express their support for causes. Artists create cleats with representation of the causes presented to the players for weeks 13 and 14 of the season. The program provides another opportunity to show the interconnectivity between the team and Eagles Autism Foundation. Landon Dickerson, Jalyx Hunt, Fred Johnson, Thomas Booker, Will Shipley, and Jeremiah Trotter, Jr. were among the players wearing EAF cleats. Jeffrey Luire, Coaches, and Brandon Graham along with the entire Eagles organization wore EAF sneakers on the sidelines, including Big Dom, who signed and auctioned his pair off to support this player-led initiative.



ALL ARE WELCOME, INCLUSION FOR ALL EVENTS

The Eagles Autism Foundation continues to prioritize inclusion and accessibility at events, so all members of the community feel welcome and safe. The EAF Sensory Room presented by Children's Hospital of Philadelphia at Lincoln Financial Field remains a destination for individuals who need to take a break, before returning to watch the Eagles game, a concert, or any other event at LFF. Along with sensory bags at guest services, EAF has assured events are sensory inclusive with trained staff, visual schedules, fidgets, and visual prompts



EAF MOBILE SENSORY UNIT

EAF introduced the new Mobile Sensory Unit, created in partnership with Children's Hospital of Philadelphia and KultureCity. This mobile sensory unit is designed to provide a calm and supportive environment for individuals with sensory needs, offering them a safe space prior to events at Lincoln Financial Field and at various events throughout the community. At Lincoln Financial Field, the Sensory Activation Vehicle is available for fans upon arrival, located in Pepsi Plaza before events, ensuring immediate access to a supportive environment.



ALL ABILITIES CLINICS

With proactive resources, flexibility, and training, events can, and should, be available to people of all ages and abilities. Once someone sees what is possible, a whole new world opens up for them. All Abilities Clinics allowed participants (one family even coming from Canada!) to experience different aspects of the Eagles organization, including Football, Adult Drum/Fitness, Cheer, Drumline, and new for this year - S.T.E.M. This year saw attendees who may have attended one clinic last year, discover new interests by participating in additional clinics.

Designed with resources and support promoting accessibility for all, the clinics foster unity and understanding, to create experiences where the greatest needs are met, allowing everyone to fully participate and have fun. All clinics had small group sizes, allowing for more personalized interaction with trained volunteers. As with all events, visual schedules were provided for attendees to feel prepared and a quiet space was available for anyone who may have needed a break. Attendees at the clinics received exclusive merchandise, while participating in unique experiences.

At the Football Clinic, participants at all skill levels went through drills including throwing, catching, tackle bags, and obstacle courses at the Nova Care Center practice facility – just like the pros. Catering to the entire life span, participants aged 14 and above showed that exercise can be fun with dancing movements to lively music at Lincoln Financial Field, followed by a session with the Drumline at the Adult Fitness/Drumline Clinic. After learning routines from the Eagles Cheerleaders, participants at the Cheer Clinic were provided their own set of pom poms to continue to practice at home. At the Drumline Clinic, participants experienced the magic of percussion, learning about tenor, bass, snare and cymbals. They played Eagles branded tambourines, immersed in the unified beat of inclusion and concluded with everyone joining in a final performance. New this year was the S.T.E.M. Clinic presented by Bentley Systems. Led by employees and engineers from Bentley Systems, an infrastructure software company, along with representatives from

The Franklin Institute, participants worked in teams to complete exciting projects at multiple stations based on science and engineering.

From seeing what is possible at All Abilities Clinics, attendees have the confidence to now explore additional events in their own communities, expanding their horizons for a variety of interests.



"THE ALL ABILITIES CLINICS ARE FILLED WITH THE MOST ENERGIZED AND AUTHENTIC STAFF AND VOLUNTEERS, WHO CREATE AN ENVIRONMENT OF CALMNESS, HAPPINESS, AND SAFETY—SOMETHING THAT'S TRULY NEEDED FOR OUR LITTLE ATHLETES AND THEIR FAMILIES," SAID MEGHAN WISMER.





EAF COLLEGE PROGRAM

MORE THAN \$22,000 RAISED

Now in its fourth year, the Eagles Autism Foundation College Program, more than doubled the number of participating colleges and universities, with original programs at Goldey-Beacom College, Neumann University, and West Chester University joined by University of Pennsylvania, University of Delaware, Chestnut Hill College, Jefferson University, and St. Joseph's University (who is also the Higher Education Partner of the Philadelphia Eagles). The program, which brings together a community of like-minded motivated students at a school, is developing into a collaboration across institutions, multiplying their impact in fundraising for EAF, as well as awareness for neurodiversity. Student ambassadors receive training and priority volunteer access for events including Eagles Autism Challenge, All Abilities Clinics, and Barefoot Country Musicfest. Each March, ambassadors meet at the Summit, held at Lincoln Financial Field, for enhanced professional growth and networking – not only with each other, but also EAF Community Grant recipients and other industry leaders, in addition to self-advocates from the Neurodiverse Gameday Staff Program who sit on a panel hosted by EAF staff. Ambassadors in the College Program, serve as models for uniting a passion for making a difference with the mission of EAF, showing a pathway for others to become involved and have an impact on their personal and professional lives- and the community.



Volunteers from the West Chester University and St. Joseph's University EAF College Programs selling merchandise at an Eagles playoff game.

"BEING ABLE TO LEAD THE EAFCP AT ST. JOSEPH'S UNIVERSITY HAS BEEN AN AMAZING EXPERIENCE FULL OF COLLABORATION, PASSION, AND GROWTH," SAID ELENA PALOMBA SJU EAGLES AUTISM FOUNDATION COLLEGE PROGRAM PRESIDENT.

"AFTER FIRST VOLUNTEERING AT BCMF, I KNEW I WANTED TO BE A PART OF THIS COMMUNITY AND HAVE SINCE ENJOYED ORGANIZING THE PROGRAM AT SJU, VOLUNTEERING ON GAME DAYS AND AT ALL ABILITIES CLINICS, AND COLLABORATING WITH MY PEERS TO RAISE MONEY. THERE IS ALWAYS SO MUCH JOY AT ALL EAF EVENTS AS CHILDREN AND ADULTS HAVE THE OPPORTUNITY TO EXPERIENCE ACCEPTANCE AND INCLUSION, AND THAT IS TRULY AN AMAZING THING TO BE A PART OF. I LOOK FORWARD TO CONTINUING TO GROW IN THIS COMMUNITY AND FOSTER A SPACE DEDICATED TO BRINGING AWARENESS TO ACTION AT SJU."

LINCOLN FINANCIAL

As Lincoln Financial's brand continues to evolve, so does its commitment and partnership with Eagles Autism Foundation. The presenting sponsor of the Eagles Autism Challenge from its first year, Lincoln Financial has been an ally and advocate for EAF and the autism community. In addition to supporting those with autism within their organization and building up their EAC team participation and fundraising, Lincoln Financial has gotten creative in finding ways for more people to get involved in support of autism research and programming. Just as the organization looks to strategically support their employees and clients' interests as part of their business model, they are also finding ways to leverage those passions to raise funds for a transformative impact in the autism community.



"LINCOLN FINANCIAL HAS A PROUD HISTORY OF PARTNERSHIP IN THE COMMUNITIES WHERE WE LIVE AND WORK, AND THERE IS NO BETTER EXAMPLE THAN OUR CONTINUED SUPPORT OF THE PHILADELPHIA EAGLES ORGANIZATION AND THE EAGLES AUTISM FOUNDATION," SAID JOHN KENNEDY, CHIEF DISTRIBUTION & BRAND OFFICER, LINCOLN FINANCIAL. "AS THE PRESENTING SPONSOR OF THE EAC, WE SET HIGHER GOALS EACH YEAR FOR EMPLOYEE PARTICIPATION AND FUNDRAISING FOR THIS AMAZING CAUSE. I'M CONTINUALLY IMPRESSED AT HOW OUR EMPLOYEES AND EVEN MANY OF OUR PARTNERS AND CLIENTS COME TOGETHER TO SUPPORT THE EAF AND MAKE A POSITIVE IMPACT IN THE LIVES OF SO MANY ACROSS THE AUTISM COMMUNITY."

Sensory Swoop, Kylie Kelce, and Ryan Hammond joined John Kennedy, Lincoln Financial's Chief Distribution & Brand Officer at the official Lincoln Financial Eagles Autism Challenge Kickoff Party.



For more than a decade, ahead of most organizations, EY has recognized the added value of neurodiverse individuals in the workplace. Built around a culture of empathy, their neurodiversity program focuses not only on hiring, but also on developing and retaining neurodiverse talent. By embracing different streams of talent to expand the pipeline of potential employees and offering wraparound support, EY ensures that neurodiverse individuals can thrive across the organization. The collaboration with the Eagles Autism Foundation aligns with the firm's commitment to build a more inclusive and diverse workforce.

For EY Metro New York Office Managing Partner Alysia Steinmann and Greater Philadelphia Office Managing Partner Dave Burkavage, neurodiversity is personal. Both have children on the autism spectrum (Alysia's two children ages 11 and 14 and Dave's 3-year-old daughter), which has given them a unique perspective on the importance of fostering inclusive environments for neurodiverse individuals. Alysia's sister, a teacher in Bucks County, has participated in EAC since the beginning. In New York, Alysia sits on the Mayor's Council for Disabilities and is looking to replicate that type of collaboration elsewhere in cities like Philadelphia to improve the fragmented support systems for

neurodiverse individuals and expand opportunities for them to succeed in the workforce.

EY has been a key player in helping meet the growing demand from clients to develop the necessary infrastructure for supporting a neurodiverse workforce. EY hosted the Neurodiverse Symposium at Lincoln Financial Field the day before the Eagles Autism Challenge to provide a platform for organizations to come together and discuss how to support neurodiverse talent. Jeffrey Lurie and Kylie Kelce were among the participants for one of the panels, and their deep personal commitment and connection resonated with attendees. Participants, from global corporations to newly started entrepreneurship, left the event with not only knowledge and toolkits to better support neurodiverse individuals, but also with stronger connections to one another and EY.

In the end, it's not just about creating a more inclusive workplace—it's about harnessing the incredible potential of neurodiverse individuals to build stronger, more innovative organizations - ultimately improving business outcomes. When the greatest needs are met, whether at events or in the office, everyone can succeed. With collaborators in the EAF community, like EY, leading the way, that future becomes a reality, helping to empower other organizations to do the same.



Eagles Chairman and CEO Jeffrey Lurie with representatives from EY.



GRANT FUNDING PROCESS

A total of 112 letters of intent were submitted for research grant funding in 2024. The projects were narrowed down to 46 full proposals that went through a comprehensive evaluation process. Each project was carefully reviewed by an independent team of scientists who have demonstrated a clear and steadfast commitment to autism research, services, and programs. It was then determined that the \$8.1 million in funding would be awarded to the 23 projects conducting cutting-edge autism research and care worldwide. Of the 23 grants, five have been awarded to international research facilities, while three have been designated as post-doctoral fellowships. The approved research projects spanned the range of building on current ongoing and effective programs to topics and approaches that were novel, exploratory, and innovative. The community grants were distributed to projects that proved to be evidence-based, were aligned with the Eagles Autism Foundation mission, and provided an immediate need in the community. Members of the Eagles neurodiverse gameday staff were part of the selection committee choosing which programs to fund based on their personal experiences.



SPECIAL OLYMPICS COMMUNITY GRANT - CITIES OF INCLUSION EVENT

On October 10, 2024, Special Olympics Pennsylvania (SOPA) – an EAF community grant recipient – held its third Cities of Inclusion Disability Summit at Lincoln Financial Field. More than 400 people (including 100 students) were joined by First Lady of Pennsylvania Lori Shapiro and a delegation from the White House to focus on five core pillars of education, employment, health, housing, and access to information and services. The event also featured an employment panel with EAF gameday staff members sharing their experience in the workforce.



Representatives from the White House joined Popcorn for the People and EAF to learn about the popcorn making process.

POPCORN FOR THE PEOPLE

Following the Cities of Inclusion, held in October which is disability in the workplace month, event staff from the White House visited the Popcorn for the People production facility, made possible by Wawa and Nouryon.



RESEARCH GRANT OUTCOMES

With the first funding taking place six years ago, results of EAF-funded research is now starting to yield results. COVID may have disrupted the process, but those dedicated to this cause, didn't allow it to affect the impact. This ongoing work is potentially able to have effect for those currently on the spectrum and certainly for future generations.



The Eagles Autism Foundation's funding of the project "Using Network Science to Investigate Employment Support for Low-Resource Youth with ASD: Measuring the impact of collaboration among organizations providing employment support for low-resource youth with ASD and their families in Philadelphia" conducted by Elizabeth Hassrick Ph.D has led to the following contributions.



AWARDED

In 2018, Elizabeth Hassrick, the principal investigator was awarded \$200,000 to carry out the pilot study.

PUBLICATIONS

The study resulted in 1 published book chapter, 5 peer-reviewed conference presentations, 1 peer-review conference abstract under review and 5 working manuscripts.



GREATER FUNDING

This has led to two additional grant funding sources; Coulter Foundation and Regional I-Corps.

IMPACTS TO THE FIELD

Measuring, building and supporting ecosystem networks for autistic adults transition to adulthood has been recognized by national scholars of autism as innovative.



NOTABLE ACKNOWLEDGEMENTS

Findings have been shared at several discussions.



The Eagles Autism Foundation's funding of the project "Maternal Dietary Patterns during Pregnancy in Association with Autism and Autism Related Traits" conducted by Kristen Lyall, Sc.D. has led to the following contributions.



AWARDED

In 2018 Kristen Lyall, the principal investigator was awarded \$285,000 to carry out the pilot study.

PUBLICATIONS

The study resulted in 2 recent publications.



GREATER FUNDING

This has led to an additional grant funding source; National Institute of Health, National Institute of Environmental Health Sciences.

IMPACTS TO THE FIELD

This project has been particularly useful in guiding additional dietary work examining combined effects of diet and contributing to larger studies.



NOTABLE ACKNOWLEDGEMENTS

The impact of this funding has contributed to supporting and developing early career scientists in their efforts to gain expertise, publish, and continue to successfully obtain funding for new studies.

The Eagles Autism Foundation's funding of the project "Assessing the Feasibility, Acceptability and Preliminary Efficacy of an Adaptive Intervention Approach for Children with ASD and Disruptive Bx" conducted by Nathan J. Blum MD., has led to the following contributions.

The Eagles Autism Foundation's funding of the project "A randomized Trial of Project ImPACT, an evidence-based intervention for infants and toddlers with autism spectrum disorder" conducted by Melanie Pellecchia Ph.D. has led to the following contributions.



AWARDED

In 2018 Dr. Blum, the principal investigator was awarded \$468,415 to carry out the pilot study.

PUBLICATIONS

The findings from this study are currently being drafted to submit for review for publication.



GREATER FUNDING

While this project has not directly resulted in NIH research funding it has led to the Hospital's announcement of the plans to launch the Autism Care Innovation Center (ACIC). The two interventions studied in the project; family navigation and the Complex Autism Program have been included as core components of the initial plans for the ACIC.

IMPACTS TO THE FIELD

The family navigator hired as a result of the study was recently awarded a planning grant from the William Penn Foundation to develop a plan to create welcoming community spaces in low income communities that promote literacy for neurodiverse children and support their families making a direct impact in the community.



NOTABLE ACKNOWLEDGEMENTS

Since this project was completed the Division of Developmental and Behavioral Pediatrics has hired a family navigator to assist families autism living in communities with a high social vulnerability index in accessing community services and services at CHOP.



AWARDED

In 2019 Melanie Pellecchia, the principal investigator was awarded \$400,000 to carry out the pilot study.

PUBLICATIONS

The study resulted in 2 peer-reviewed publications and several conference abstracts.



GREATER FUNDING

This has led to an additional grant funding source; Institute of Education Sciences.

IMPACTS TO THE FIELD

This partnership has led to a shift in the service landscape for young children who receive publicly-funded early intervention. Based on these findings and the continued partnership, there is now a large scale effort to improve the implementation of caregiver-mediated naturalistic developmental behavioral interventions as a first line of service for children under age 5 in Philadelphia.



NOTABLE ACKNOWLEDGEMENTS

The findings from this project have cemented a meaningful partnership between PENN and the early intervention system that serves children with ASD in Philadelphia and has led to policy changes at the county level, requiring providers to complete training in Project ImPACT.

The Eagles Autism Foundation's funding of the project "Social neural markers as indicators of cognitive outcome in preschoolers with ASD" conducted by Yu-Han Chen has led to the following contributions.

The Eagles Autism Foundation's funding of the project "Emotional expressivity in young children with and without Autism Spectrum Disorder" conducted by Andrea Wieckowski has led to the following contributions.



AWARDED

In 2019, Yu-Han Chen, the principal investigator was awarded \$400,000 to carry out the pilot study.

PUBLICATIONS

This Eagles Autism Foundation pilot grant has been acknowledged in four publications.



GREATER FUNDING

This award has not yet led to greater funding sources. However manuscripts are currently in preparation, and pilot data has been used for applying to NIH R01 funding. Through the EAF pilot grant, collaboration has also been established and several R01/R21 NIH proposals are written and are waited for review in the next NIH funding cycle.

IMPACTS TO THE FIELD

This study provides a framework for how to mitigate the challenges inherent to imaging awake young children, using clinical and technical supports to tailor the scan experience to maximize tolerance and optimize data yield.



1

NOTABLE ACKNOWLEDGEMENTS

With EAF funding support the PI and team have optimized their infant and preschool children multi-modal neuroimaging protocol and analyses pipelines, focusing on studying brain function and structure maturation in preschool children with autism. Several peer-reviewed papers have been published and the team continues to present research findings from the EAF project at international conferences.



AWARDED

In 2020 Andrea Wieckowski, the principal investigator was awarded \$400,000 to carry out the pilot study.

PUBLICATIONS

Publications from this study are currently in progress.



GREATER FUNDING

This has led to an additional grant funding source; Ritvo/Slifka Foundation award to expand on the research. The team is using the data as pilot for an NIH application for next year.

IMPACTS TO THE FIELD

Results from this project has illuminated need for multi-method approach to measuring emotion expression in toddlers with and without autism. Thorough evaluation of emotional expressivity in young children with ASD through multiple tasks and methods has potential to mitigate burden and societal costs of ASD across diverse communities.




1

NOTABLE ACKNOWLEDGEMENTS

Research from this study has been presented on several posters at national and international conferences. In addition, data has been utilized for 2 master theses which were successfully defended and are currently being written for publication.

The Eagles Autism Foundation's funding of the project "Functional Connectivity of the Amygdala in Autism" conducted by Dorit Kliemann has led to the following contributions.




AWARDED

In 2020, Dorit Kliemann the principal investigator was awarded \$400,000 to carry out the pilot study.

PUBLICATIONS

The study resulted in 1 published paper in the American Journal of Psychiatry, with considerable attention and 1 paper in preparation for submission.




GREATER FUNDING

This award has not yet led to greater funding sources. However, the team is preparing to seek two federal funding mechanisms.

IMPACTS TO THE FIELD


This project has no direct clinical impact on the autism community, however, the advancement of basic science with rigorous, replicable and robust results is indispensable if we are to move towards a better understanding of the neurobiological basis of autism and its heterogeneity.



NOTABLE ACKNOWLEDGEMENTS

The PI states receiving the pilot funding from EAF has significantly shaped their ability as an Early Career Researcher to hit the ground running and build towards larger federal funding.

The Eagles Autism Foundation's funding of the project "Role of Excessive Embryonic Neurogenesis Autism Spectrum Disorder" Conducted by Byoung-il Bae, Ph.D. has led to the following contributions.




AWARDED

In 2021 Byoung-il Bae, the principal investigator was awarded \$400,000 to carry out the pilot study.

PUBLICATIONS

This project is currently being carried out and will look to seek publication.




GREATER FUNDING

This has led to an additional funding source: R21 Award from NIH.

IMPACTS TO THE FIELD

This project is currently being conducted. The findings from this project aim to understand mechanisms by which abnormal cortical development underlies functional abnormalities in ASD.



NOTABLE ACKNOWLEDGEMENTS

This EAF Research Grant, creating the opportunity for the PI to continue his post doctoral research, hire a technician, and generate more preliminary data on autism spectrum disorder using a variety of cutting-edge techniques.

EAGLES AUTISM FOUNDATION FUNDED PROJECTS

PILOT STUDIES

Institution

Boston Children's Hospital	Early identification of autism using biosensor recordings of infant cries: A pilot study
Children's Hospital of Philadelphia	Molecular Mechanisms of the Autism-Causal Gene, ADGRB3
Children's Hospital of Philadelphia	Uncovering the burden of chromatin dysregulation in autism spectrum disorders
Children's Hospital of Philadelphia	Targeting Nav1.2 associated protein interactions to rescue sodium current in SCN2A associated autism disorders.
Emory University	Eye-tracking-based measurement of real-time learning in autism: Towards the development of individualized interventions and objective outcome measures
Emory University	Enhancing clinical decision making in autism through gaze-linked neural markers of social information processing
Harvard Department of Stem Cell and Regenerative Biology	ASD and intellectual disability exemplar gene Bcl11a/Ctip1 regulates subcellular growth cone-synaptic RNA and protein localization, associative circuitry, and social behavior with aberrant interhemispheric and de novo circuitry to basolateral amygdala: discovery and toward therapy in mice and transplanted human neurons
Icahn School of Medicine at Mount Sinai	Molecular and circuit basis of ASD-associated cognitive deficits
Massachusetts General Hospital	Do sex differences in microglial mitophagy program male social behavioral vulnerabilities?
Massachusetts Institute of Technology	Correcting cortico-striatal circuit dysfunction and related behavior defects by NR2B antagonists in a marmoset model of ASD
Ottawa Hospital Research Institute	Deciphering the role of chromatin remodelling complexes in ASD etiology
University of California, San Francisco	Autism genes in ciliary biology
University of Connecticut School of Medicine	Contributions of GABRB3 and HERC2 overexpression to Dup15q autism
University of Michigan	Genetic Architecture of Autism Risk Genes in Sleep and Circadian Rhythms
University of Ottawa	Restoring delayed motor learning in a mouse model of 16p11.2 deletion syndrome
University of Pennsylvania	Testing the Independent and Additive Impact of Inclusive Educational Practices and Social and Emotional Skills Training on Inclusion and Social, Emotional and Wellbeing Outcomes in Children on the Autism Spectrum – A Pilot Trial
Washington University School of Medicine	Engineered synthetic proteins for the treatment of autism spectrum disorders



BRAZIL

Institution

University of São Paulo	Exploring Microbiome-Driven Epigenetic Changes in Autism and their Impact on Neuronal Glutamate Signaling
University of São Paulo	Understanding neurodevelopment and neurodegeneration in autism with the use of chimeric brain organoids and blood-brain barrier models
Universidade Federal de São Paulo	Maternal Metabolomic Changes Due to COVID-19 Hardships: Causal Implications for Offspring Neurodevelopment and Autism Risk

POST DOCTORAL

Institution

Children's Hospital of Philadelphia	The mechanistic basis of autism spectrum disorder in Dravet Syndrome
A.J. Drexel Autism Institute	Examining the relationship between dietary exposure to plasticizers and autism-related traits in children
A.J. Drexel Autism Institute	Pathways and Courses of Cardiometabolic and Neurodegenerative Diseases in Older Autistic Adults



COMMUNITY PROJECTS

A Step Up Academy, ACEing Autism, American National Red Cross, Autism R.E.C., Bancroft, A New Jersey Non-Profit Corporation, Children's Hospital of Philadelphia-Center for Autism Research, Children's Hospital of Philadelphia-Fostering Health Program, Comprehensive Learning Center, Easterseals of Southeastern Pennsylvania, EmpowerU Specialty Fitness, Father Bill Atkinson Service Corps, Goldey-Beacom College, Institute for Behavior Change, Intercommunity Action, Joe Hand Boxing Gym, Joseph E. Johnson Jr. Elementary School, Kinney Center at Saint Joseph's University (SJU), Kulture City, Neurodiversity Employment Network, Office for People with Disabilities-City of Philadelphia, The Pathway School, The Philadelphia Orchestra, Salus at Drexel University, Special Equestrians, Special Olympics Pennsylvania, Inc., Stratford Friends School, Theatre Horizon, University of Pennsylvania - Penn Dental, Valley Forge Educational Services, Variety, Woods Services, Inc.



EAGLES AUTISM FOUNDATION PEER REVIEW PANEL OF EXPERTS 2024

SCIENTIFIC REVIEW PANEL

<i>Peer Reviewer</i>	<i>Institution</i>	<i>Location</i>
Dr. Emanuel DiCicco-Bloom	Rutgers Robert Wood Johnson Medical Center	New Brunswick, NJ
Dr. Anita Bhattacharyya	University of Wisconsin-Madison	Madison, WI
Dr. Eric Butter	Nationwide Children's Hospital/Ohio State University College of Medicine	Columbus, OH
Dr. Lea Ann Chen	Rutgers Robert Wood Johnson Medical Center	New Brunswick, NJ
Dr. Silvia De Rubeis	Icahn School of Medicine at Mount Sinai	New York, NY
Dr. Adriana Di Martino	Child Mind Institute	New York, NY
Dr. Suzannah Iadarola	University of Rochester Medical Center	Rochester, NY
Dr. Kenneth Kwan	University of Michigan	Ann Arbor, MI
Dr. Chiara Manzini	Child Health Institute of NJ (Rutgers)	New Brunswick, NJ
Dr. Kimberley Mcallister	Wake Forest University	Winston-Salem, NC
Dr. Eric Morrow	Brown University	Providence, RI
Dr. Tomasz Nowakowski	University of California San Francisco	San Francisco, CA
Dr. Damon Page	Seattle Children's Research Institute	Seattle, WA
Dr. Ernest Pedapati	Cincinnati Children's Hospital Medical Center	Cincinnati, OH
Dr. Benjamin Philpot	University of North Carolina Neuroscience Center	Chapel Hill, NC
Dr. Tim Roberts	Children's Hospital of Philadelphia	Philadelphia, PA
Dr. Celine Saulnier	Neurodevelopmental Assessment & Consulting Services	Decatur, GA
Dr. Jason Stein	University of North Carolina Neuroscience Research Center	Chapel Hill, NC
Dr. Peter Tsai	UT Southwestern Medical Center	Dallas, TX
Dr. Sara Jane Webb	Seattle Children's Research Institute	Seattle, WA
Dr. John Welsh	University of Washington and Seattle Children's Research Institute	Seattle, WA
Dr. Lonnie Zwaigenbaum	University of Alberta, Canada	Edmonton, Alberta





PRESENTING SPONSOR



CO-PRESENTING SPONSOR



OFFICIAL SPONSOR



PROUD SPONSOR



IN KIND SPONSOR



SUPPORTING SPONSOR



COMMUNITY SPONSOR



7 YEARS

7 YEARS PARTICIPATION

7 YEARS DONATION

Marc Alberio	7	7
Andrea Albert		7
Colleen Albrecht	7	
Carrie Anthony	7	7
Erin Augustine		7
Sam Avellino	7	
Marla Axelrod	7	7
Julie Bacanskas	7	
Julie Bartl	7	
Jennifer Beane	7	7
Brian Beppel	7	
Joe Blasic	7	
Otha Bledsoe	7	
Anthony Bonagura	7	7
Melody Brogan	7	7
Howard Brooks	7	
Isaac Brubaker	7	
Dane Bryant	7	7
Bethany Bullard	7	7
Jessica Bullion	7	
Wanda Bullion		7
Ernest Burrell	7	
Dana Buttarro	7	
John Canavan	7	
John Candelori	7	7
Thomas Caracciolo	7	7
Corinne Chun	7	
Nicholas Church	7	
Scott Cirella	7	7
Alexandre Costabile	7	7
Anthony Cozzi	7	7
Jared Culotta	7	7
Aileen Dagrosa	7	7
Brian Dea	7	
Chris DeBellis	7	
Cecilia Deemer	7	
Vincent Del Rossi	7	

Greg DeLuca	7	
Linda Dessaigne	7	
Diana Desumma	7	7
John Dever	7	
Elidari Dietz	7	
Frank Dillon	7	
Ernie DiLullo	7	
Lauren DiLullo	7	
Christine Dorn	7	
Chante Douglas	7	7
Paul Dradransky		7
Stephanie Ennis	7	7
Claire Ennis		7
Howard Eskin	7	
Jennifer Evans	7	
Kimberly Fee	7	
Alex Felmeister	7	7
Robert Ferrara	7	
Michael Filano		7
Chris Fink	7	
Evan Forosisky		7
Curt Forst		7
Eric Forst		7
Krista Forst	7	
Tracy Foster	7	
Brittany Gallagher	7	
Michael Georgianna		7
Andrew Gerdes	7	
Kenneth Gibb		7
Michael Gibboni	7	
Joan Gill	7	7
John Gonoude	7	
George Gouvas	7	
Maggie Gouvas	7	
Dottie Greenhalgh	7	
Jason Griffin	7	
Frank Gumieny	7	
Ryan Hammond	7	
Eddie Harbaugh	7	
Lee Ann Hartley	7	
Ben Hartranft	7	
Glenn Hartranft		7

Shameem Hasan		7
J.P. Hayslip	7	
Robert Hellmuth III	7	
Robert E. Hellmuth III		7
Melissa Heron		7
Christine Hicks	7	7
Shanna Higgins	7	
Melissa Higgins	7	
Kevin Hilbmann	7	
Julie Hirshey	7	
Lindsay Hogan		7
Ryan Hummel	7	
Joyce Iman	7	7
Shahed Iqbal		7
Tammy Jacobs		7
Susan Jacobson	7	
Shawn James	7	7
Patrick Jeffries	7	
Steven Jones	7	
Rob Kaloustian	7	
Amber Karwacki	7	
Thomas Karwacki	7	
Kasey Kaumans	7	
Kylie Kelce	7	7
Herb A. Keyser	7	7
Colin Klauder	7	
Denise Klauder	7	
Todd Kleina		7
Denise Kozul	7	
Shannon Lawson	7	
Kiel Leggere	7	7
Doug Lesser	7	
Eric Long	7	
Leo Luciani	7	
Tara Madison		7
Peter Mariani		7
Drew Masciangelo	7	
Jen Mastrangelo	7	
Matthew Mazzoni	7	
Lindsay McDonnell	7	7
James Mcgurk	7	
Kevin McMahon	7	

***"MY FAMILY IS MY BIGGEST
MOTIVATOR TO PARTICIPATE
IN THE EAGLES AUTISM
CHALLENGE EVERY YEAR," SAID
JESSICA HUNCKLER, NATALIE'S
MOM. "SUPPORT WHILE TRYING
TO NAVIGATE RESOURCES AND
A LIFE THAT YOU WEREN'T
PREPARED TO PARTICIPATE IN
IS EXTREMELY IMPORTANT. SO
FAR, EACH YEAR, WE'VE HAD
MORE PARTICIPANTS FOR THE
#HAPPYNAT TEAM AND HAVE
BEEN ABLE TO RAISE
MORE MONEY!"***

Matthew McNally	7	
Mardelle McNally		7
Emily McNichol	7	
Chris McPherson	7	
Patrick McStravick	7	7
Clark Minken	7	
Bill Mizell	7	
Christian Molnar	7	7
Brian Napoli	7	
Stephanie Nash	7	
Pat Nash		7
Poorya Nayerahmadi	7	
Julia Nowels	7	
Mike O'Connor	7	
Jessica Ogburn	7	
Jeanette Oldham		7

Joe O’Pella	7
Kristie Pappal	7
Brian Papsen	7
Dominic Paranzino	7 7
Jade Parkinson	7
Tanmay Patel	7
Carly Pennacchia	7
Dennis Pitts	7
Greg Poda	7
Jorden Polisky	7
Marianne Praediger	7
Richard Prutzman	7
Rachael Pulsfort	7
Mohammed Rahaman	7
Erik Rausch	7
Tara Rednour	7 7
Liz Reed	7
Priscilla Reed	7
Thomas Riley	7
Sally Rogers	7
Kathleen Rosi	7
Jacquelyn Rothera	7
Toni Rufo	7
Dan Ryan	7
Patricia Santelle	7
Kirsten Saraceni	7
Matthew Schwenk	7
Colleen Scoles	7
Janet Seidner	7
Gary Shaeffer	7
Chris Sharkoski	7 7
James Shew	7
John Shute	7
Marie Shute	7
Marianne Sladzinski	7
Shannon Smerkanich	7
Brandon Sochovka	7
Andrea Sorli	7
Kevin Sorli	7 7
Erica Sorrels	7 7
Dave Spadaro	7
Kevin Sterling	7

Kristin Stockbower	7
Laurence Stom	7
Stephanie Stricker	7 7
Brett Strohsacker	7
Maura Strohsacker	7
David Sullivan	7
Tara Sutphen	7
Danielle Syron	7
David Szolna	7 7
Marie Szolna	7 7
Kimmarie Taylor	7 7
Jessica Teson	7 7
Thomas Toland	7
Tom Toland	7
Hannah Tomkovicz	7
Austin Tracy	7 7
Rachel Trump	7 7
Norman Vosschulte	7
Kevin Walsh	7 7
Mat Warner	7 7
Stephen Weingarten	7
Tara Welsch	7
David Wender	7 7
Kirk Wilson	7
Michael Winsey	7
Monte Wong	7
Meghan Wright	7
Regina Ykoruk	7
Victor Ykoruk	7
Rob Zastavny	7 7



“MY SON BRADLEY WAS DIAGNOSED WITH AUTISM IN MARCH OF 2022, AND WE WANTED TO DO SOMETHING TO BRING AWARENESS TO OUR FRIENDS AND FAMILY,” SAYS STEPHEN DELONG. “WE CHOSE FUNDRAISING FOR EAC AS A WAY TO SPARK CONVERSATIONS AND MAKE A POSITIVE IMPACT ON OTHERS’ LIVES.”

FUNDRAISING

Hall of Fame

\$100,000 AND ABOVE

Howard Eskin
Jason Kelce

\$50,000 AND ABOVE

Edward Callahan
Howie Roseman

\$25,000 AND ABOVE

Jeffrey Lurie
Christina Weiss Lurie
Annette Schuster

\$10,000 AND ABOVE

Marc Albero
Jamie Aldridge
Connor Barwin
Nicole Bottino
Ed Brabazon
Brendan Kent
Stephen DeLong
Frank Gumienny
Nick Haas
Ryan Hammond
Ben Hartranft
Stephen Hurley
Christopher Johnston
Danielle Kelley
Denise Kozul
Hannah Kraynak
Jordan Mailata
Emerson Makin
Courtney Marone
Jim McCafferty
Patrick Moyers
Brian Papson
Megan Peppel
Jennifer Perry

Robin Restrepo
Lindy Rolston
Christian Romanelli
Donald Smolenski
Dave Spadaro
Ashley Steever
Stephanie Stricker
Lauren Talley
Adrian Taskin
Kirk Wilson

\$5,000 AND ABOVE

Nicole Albor
Abigail Allman
John Booty
Josie Brandt
Joe Buriak
Tom Byrne
Sean Coloeman
Stepahnie Crawford
Lindsay Cristaldi
Amanda Dayton
Grayson Ennis
Stephanie Ennis
Laura Faulkner
Krista Forst
Kristen Gerhardt
Brian Golderer
Bob Gordon
Allison Gumienny
Justin Gumienny
Dennis Guzy
Melissa Higgins
Laura Jacono
Kylie Kelce
Travis Kelce
Tony Leonard
Ryan Lloyd
Thomas Magliaro
Roger Miller
Christian Molnar
Kristie Pappal
Christopher Reed
Liz Reed
Mike Scarinci
Lenny Scheurle

Bill Sepich
Jemal Singleton
Taylor Spoon
Christina Van Riper
Allyson Vento
David Walker
Mat Warner
Bruce White
Debra Wollett-Delso

\$2,500 AND ABOVE

Timothy Abell
Anastasia Adams
Ben Albert
Denise Anderton
Kristin Angstadt
Mary Kaye Anthony
Michelle Aurich
Al Austin
Arkadiusz Bakula
Julie Bartl
Ellen Basford
Jennifer Bender
Danielle Bewick
Nicole Bissinger
Jeremy Boco
Heather Borz
Colleen Briggs
Chase Britton
Michelle Britton
Owen Britton
Jayson Bronchetti
Howard Brooks
Doug Browne
Kylee Bucci
Michael Burdsall
Frank Buttaro III
Shane Camardo
Gino Caporale
Nicole Carl
Nick Carlino
Jaimie Carr
Tori Clayton
Kelsey Click
Erin Conaway
Justin Copley

Rabeca Cotton
Lee Crawford
Mia Cristaldi
Megan Currie
Juli Dale
Susan Dallabrida
Kimberly Davis
Janine Decembrino
Nicholas Deddy
DeMara Deena
Greg Delimitros
Jaclyn Denmark
Gabrielle Dever
Michael Dilenno
Tina Dilenno
Stephanie Downey
Robert Doyle
Iain Duke-Richardet
Elizabeth Dunphy
Joseph Dunphy
Jake Elliott
Jerry Ermentrout
Karly Farrell
Kimberly Fee
Christopher Ferris
Sonya Fields
Ginger Fisher
John Flatley Jr
Tracy Foster
Jacqueline Frederick
Sarah Fryling
Joe Fuhr
Jessica Galbraith
Cj Gephart
Kenneth Gibb
Susie Glick
Mary Jude Goff
Michael Gordon
Caleb Gottschall
Josh Graffius
Troy Graffius
Janet Grosso
Jessica Haenn
Toby Hanyok
Glenn Hartranft
Sandy Hartranft
Devon Hartzell

Pat Hasher
Andrea Hazeltine
Ann Henderson
Scott Hendrickson
Cristina Herrera
Anthony Herro
Joseph Herro
Nicole Herro
Danielle Hettinger
Leslie Hickey
Candace Hoft
Megan Holcomb
Lisa Hostetler
Alexis Hubenak-Edwards
Melanie Huckin
Tyler Huffman
Nicole Huffner
Lindsey Humanik
Jessica Hunkler
Jamie Huon
Sarah Hurley
Krista Iannone
Joyce Iman
Joe Jacono
Kathleen Jacono
Louis Jacono
Keith James
Bryce Johnston
Lauren Kearns
Matthew Kelly
Rylee Kennedy
Chandra Kotagiri
Danielle Krawczyk
Merric Lariviere
Bernard Lee
Christen Lentz
Rachel Lewis
Alex Logue
Katie Loizeaux
Arthur Lukof
Christine Maguire
Joe Malatesta
Joseph Malone
Sarah Malone
Jasmine Mangat
Kim Marusco
Rocky Marusco

Drew Masciangelo
Raymond Masucci
Sinead Merriman
Kate Metz
Amy Meyer
Clark Minken
Gail Minorics
James Minorics
Kevin Moulton
Stephanie Nash
Zachary Neuin
Dj Nowels
Donald Nowels
Kim Nowels
Taylor Nowels
Elijah Nugent
Matthew O'Brien
Robert O'Donnell
Cara O'Neal
Jessica Ogburn
Sheila Olt
Lauren Pace
Janice Pakstis
Emily Parenteau
Julie Parkerson
Chelsea Pe Benito
Eric Peppel
Kevin Peppel
Joseph Perna
Devon Philip
Jessica Philippou
Samantha Phillips
Genevieve Prechtel
Alexis Rabidue
Scot Rainear
Megan Reilly
Jennafer Revelle
Glen Roetman
Pam Rosenberg
Jill Ruggieri
Melissa Samore
Ronnie Samore
Ron Sandor
Kirsten Saraceni
Stephanie Schroeder
Dan Schuster
Bill Sepich

Jennifer Sepich
Katelyn Simpson
Adam Sklar
Marianne Sladzinski
Eric Smith
Harry Smithers
Brandon Sochovka
Erica Sorrels
Julie Spak
Marlene Steele
Scott Steever
Cindy Stein
Christopher Streibich
Ellen Sweeney
Rob Sweeney
Braeden Tarzwell
Mario Tassi
Kimmarie Taylor
Hollis Thomas
Mark Tierney
Tom Toland
Regina Tracy
Alice Tran
Dana Trauger
Alex Vaello
Emily Vanim
Michael Vanim
Tricia Vargo
Colton Vautard
Steve Vento
John Venuti
Chris Ward
Meghan Watt
David Wender
Steve West
Braxton Wilkie
Michael Winsey
Sean Wischum
Trysha Wischum
Aksel Yavalar
Kellie Yavalar
Heather Yost
Noah Yost
SWOOP

DONATIONS \$2,500+

Anastasia Adams
David Adelman
Stuart Ages
Marc Alberio
Nicole Albor
Jamie Aldridge
Anthony Almodovar
Don Antonacio
Kimberly A Shem Tov
John Ballbach
Vivek Bantwal
Meredith Barrack
Michael Barry
Frank Bartuski
Connor And Laura Barwin
Jacob Basch
Richard and Connie Bashore
Jean and Harlan Batrus
The Baxter Family
Andrew Beck
Raj Beri
Dean Bianchini
Karen Bleznak
Nicole Bottino
Maryellen Bowers
Christopher and Michelle Britton
Joseph J Brodzik
Sonia Brooks
Jessica Burkett
Margery Byrne
Edward Callahan
Orlando Carvalho
Colin Convey
Ellen Cooper
James Covello
Richard Crawford
Stepahnie Crawford
Joshua Davis
Stephen DeLong
Thomas Devine
Joseph Di Mediop
Edward Joseph Dolan
Patrick Dolan
Jody Donohue
Scott Dorn
Randy Duarte
Dilip Dudhat

Greg Duncan
Elizabeth Dunphy
Sheri Easley
Chaz Elliott
Gerald George Ermentrout
Howard Eskin
Ben Esquibel
Michael Fagan
Karly Farrell
Richard Faris
Joseph Fenkel
Justin M Fiorillo
Raymond Flynn
Jacqueline Ford
Lauren Foster
Michelle Franchetti
Samuel and Wendy Frieder
Jeffrey Geiger
Kristen Gerhardt
Ron Giannone
Kenneth Gibb
Nicholas Giuffre
Susie Glick
Brian Golderer
Robert Gordon
Eric and Rachel Green
Richard Green
Dottie Greenhalgh
Paulette Greenwell
Garth Groman
Dennis Guzy
Lisa Halbruner
Charles Hallett
Frank Hanna
Glenn Hartranft
Scott Hambridge
Katrina Harris
Ashleigh Hill
Paul and Margaret Hondros
Greg Hufner
Lyris Hung
Chad Hurley
In Seon Hwang
Scott Isdaner
Susan Jacobson
Larry Johnson
Henry Justi

Matthew Karis
Drew Katz
Jason and Kylie Kelce
David Kelleher
The Kelly Family
Kevin Kennedy
Brendan Kent
Hannah Kraynak
Kevin and Nancy Lagasse
Sara Lally
Marty Leber
Christen Lentz
Christopher Le Vine
Kevin Loftus
Michael Luby
Ben Luckock
Paul and Denise Lundholm
Dominic Mariani
Mr. And Mrs. Thomas M. Marturano
Terrance J McCarty
Raymond McCool
Maureen McCormick
Ed McGowan
James McHugh
Joe McLaughlin
Courtney Mello
Paul L Menta
Tom Meredith
Stephen Meyer
John and Leigh Middleton
John Minnich
Chuck Montufar
Tim Moorey
Kevin Moyzan
Lawrence Mullin
Joe Narzikul
Patrick Nash
Tom Nerney
Julia Nowels
Ethan Ordog
Kevin O'Neil
David Pacitti
Mehul Pandya
Lisa Pantuliano
Megan Peppel
Sheryl Peters
Dave Petrucco

Laura Pitt
John Port
Peter Prostowich
Russell Queen
Amanda and Conrad Radcliffe
Andrew Rallis
Chris Reed
Glenn Reed
Katie Remvidas
Darren Riddle
Chris Romanelli
Robert Ross
Shantanu Roychowdhury
John Ruga
Ted Rumph
David Ryan
Michelle Schmidt
Debi Schroedel
Annette Schuster
Kirsten Seal
Michael And Christine Sherlock
Keith Singer
Marianne Sladzinski
Laura Slowik
Devon Smith
Babak Sobhani
Olivia Sokol
Jerry Sokolow
Corey Spora
Ashley Steever
Jennifer Strasinski
Stephanie Stricker
Christine Stow
Kim Stroud
Billie Suarez
Ellen Sweeney
Rob Sweeney
Lauren Talley
Vikas Tandon
Mark Tomkovicz
Lisa Townsend
Tyler Trout
Michael Vanim
Tom Vellios
Jennifer Volatile
Justin Wellen
John Volz

Joseph Gator Walicki
Lindsay Wanko
Chris Ward
Tyler Washington
Madison Webb
Steve West
Jake Westphal
Jenifer and Jeff Westphal
Bruce White
A. Morris Williams, Jr. & Elaine W. Camarda
Jennifer Williams
Linda Wilson
Barry Winograd
Amanda Wisniewski
Sean Woodroffe
Jeff and Janine Yass
Victor Ykoruk
David Yudis
Chuck Zacney

FOUNDATIONS AND ORGANIZATIONS

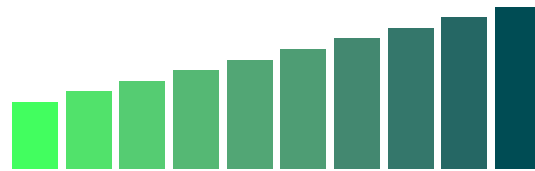
Alcott Giving Fund
Aramark Global Business Services
Bank of America
Barefoot Country Music Fest
Barnaby's Restaurant and Pub
Bates Entertainment Group, LLC
BGIZ Foundation
Brown and Connery, LLP
Bright Funds
Carefree Boat Club, LLC
Cedar Fair Charities
CEVA Animal Health
Charlie's, Inc.
Chickie's and Pete's
Chubbies, Inc.
Claneil Foundation, Inc.
The Club at Diamond Beach
The Community's Foundation
Dandelion
Dave and Busters, Inc.
Delco Group Charities Fund
Dietz Family Foundation
E Walnut Business Ventures, LLC
Ernst and Young, LLP
The Estate of Nancy Wolfe

Fanatics Foundation
Federal Distilling
Federal Reserve Bank
Fidelity Charitable
Firsttrust Bank
Five Below
Flyers Charities
Forman Family Foundation
The Forst Foundation
Freedom Mortgage Corporation
Fujitec
Garage Beer
The Gitlin Family Foundation
The Glenmede Trust Company, N.A
The Heidnall Charitable Fund
HGN Services, LLC
IMS Trading, LLC.
The Inlet
Job Supplies
John Templeton Foundation Donation Fund
Johnson And Johnson
JT Brewski, Inc.
Justin & Lee Kellogg Sadrian Foundation
The Katz Foundation
Knights Abstract, Inc.
Knollwood Investment Advisory, LLC
Landis Thirty-Nine, Inc.
Lincoln Financial
Lindt
LMCC Of The IBEW Ninety Eight
Mid-Atlantic Association of College & University
Housing Officers
Majik Foundation
The Manny And Ruth Cohen Foundation
Marilyn Rauland Kidder Foundation
The Mark and Louann Campbell Charitable Fund
Marple Newtown School District
Matchfire
McCloskey's Tavern
Merrill Lynch, Pierce, Fenner, & Smith, Inc.
MFI Foundation
The Michelson Foundation
Mill Creek Capital Advisors
Miller Twist
Mom Water
Next for Autism
Nouryon
Ocean Drive
O'Donnell's Pour House
The PAL Buckingham Foundation

Park Avenue Charitable Fund
Patricia Bartlett & Michael Barry
The Philadelphia Phillies
The Philly Specials - Vera Y Records
Pond Le hockey Giordano LLP
Primrose School of Concordville
Pro Financial Services, LLC
Provco Group, LLC
Red Robin - Lehigh Valley Restaurant Group
Rerum Novarum Charitable Trust
Ricci, Tyrrell, Johnson & Grey
Rita's Franchise Company, LLC
Rockland Investments
Rolling Suds, Inc.
Samuel P. Mandell Foundation
Schreiber Cooper
Sea Isle Ice Spiked Ice Tea, LLC
The Simmons Family Foundation
Simon Pearce, Inc.
Skookum Contract Services
Springton Lake Middle School
St. Mary Magdalen Catholic Church
Stateside Vodka - Federal Distilling
Sterling Limo
Stoutland University
The Strauss Foundation
Swain Family Foundation
Sweet Grace Distilling Company, LLC
Tomatoes
UnitedHealth Group
USLI
Vay Foundation
The Wawa Foundation
WBE Line Services
The Wharf Restaurant
West Pharmaceuticals
Wild Man Drinking Company
Women's Festival







EAGLES **AUTISM**
FOUNDATION