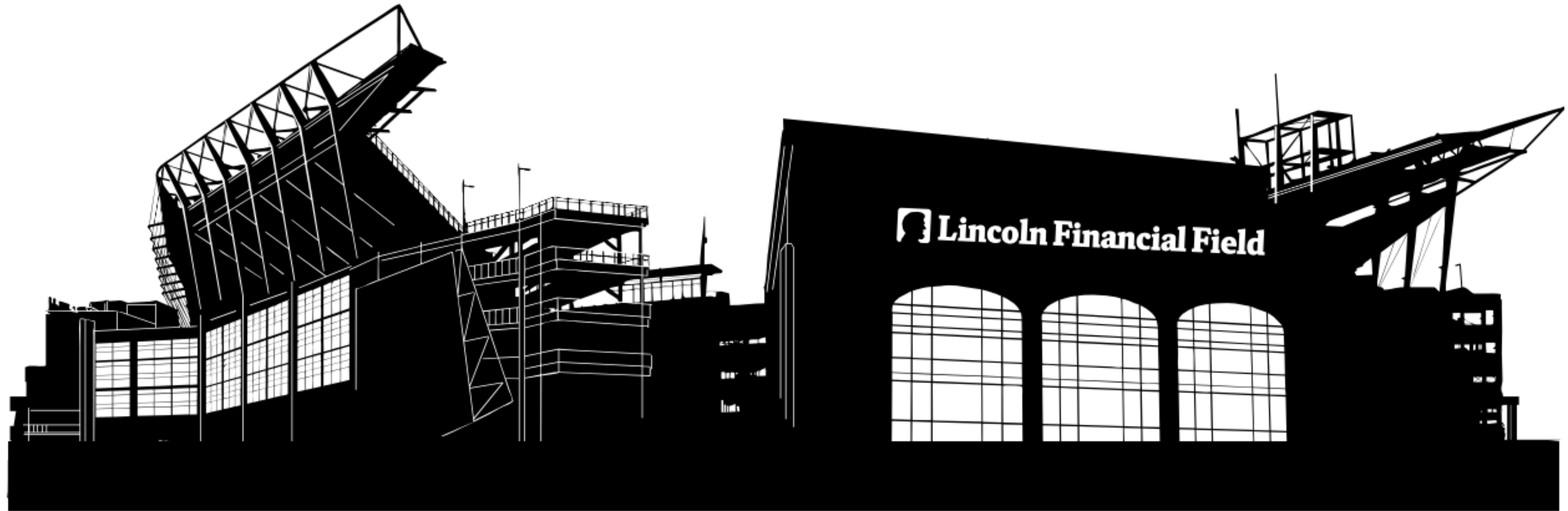


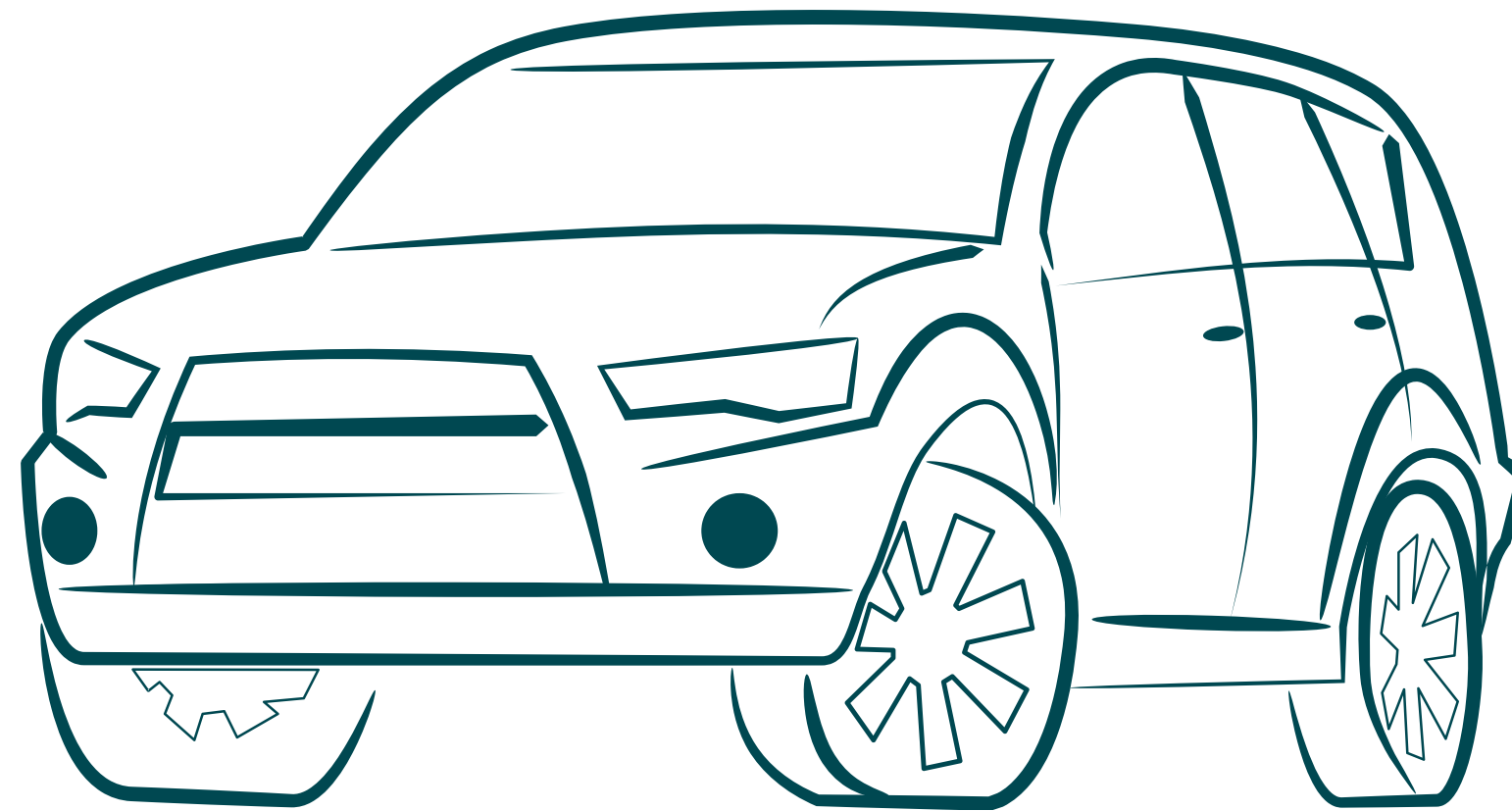
EAGLES **AUTISM**
FOUNDATION

GAMEDAY VISUAL SCHEDULE

**TODAY I AM GOING TO A GAME AT LINCOLN FINANCIAL
FIELD.**



WHEN I ARRIVE, PARK THE CAR IN THE PARKING LOT.



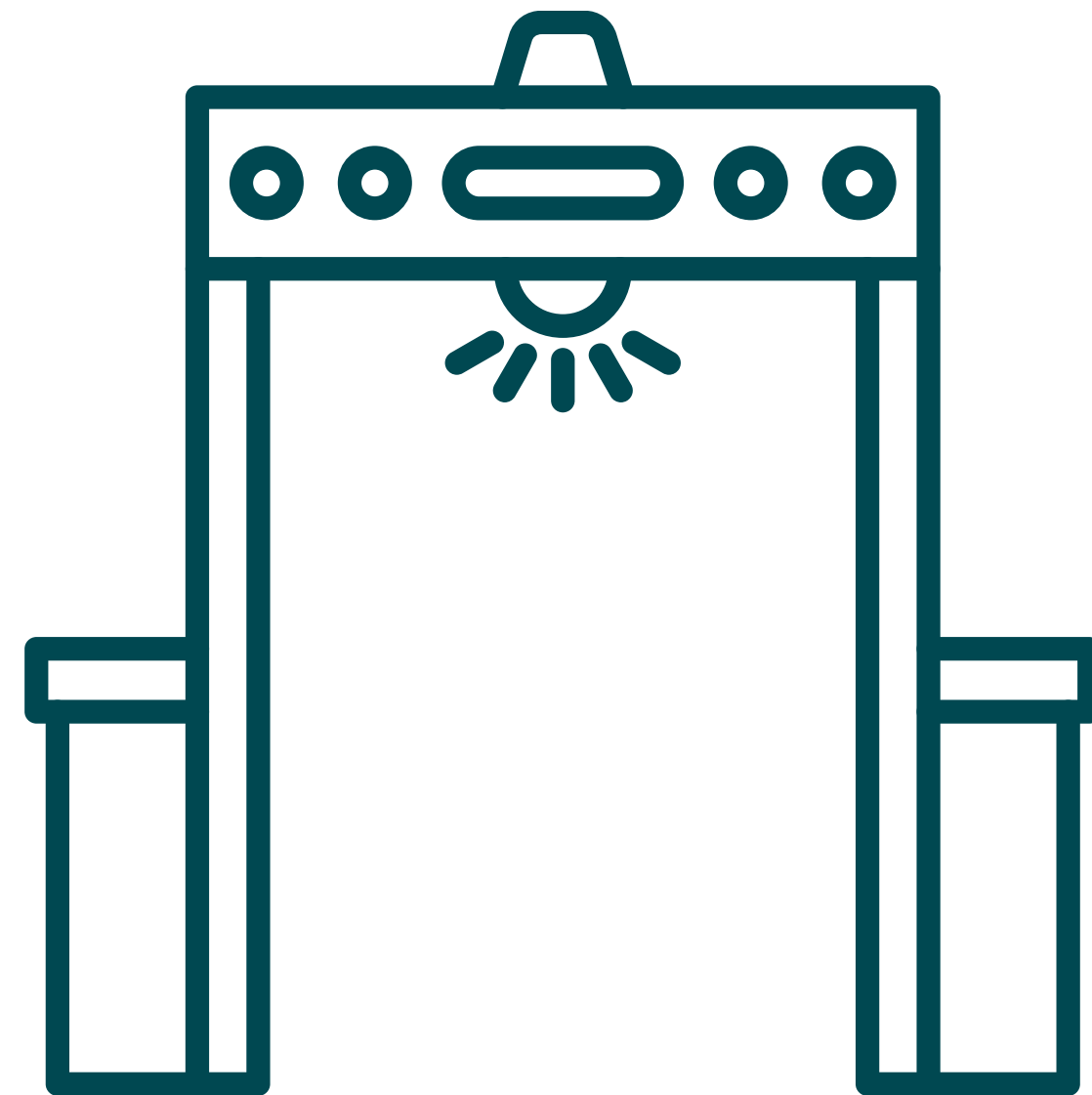
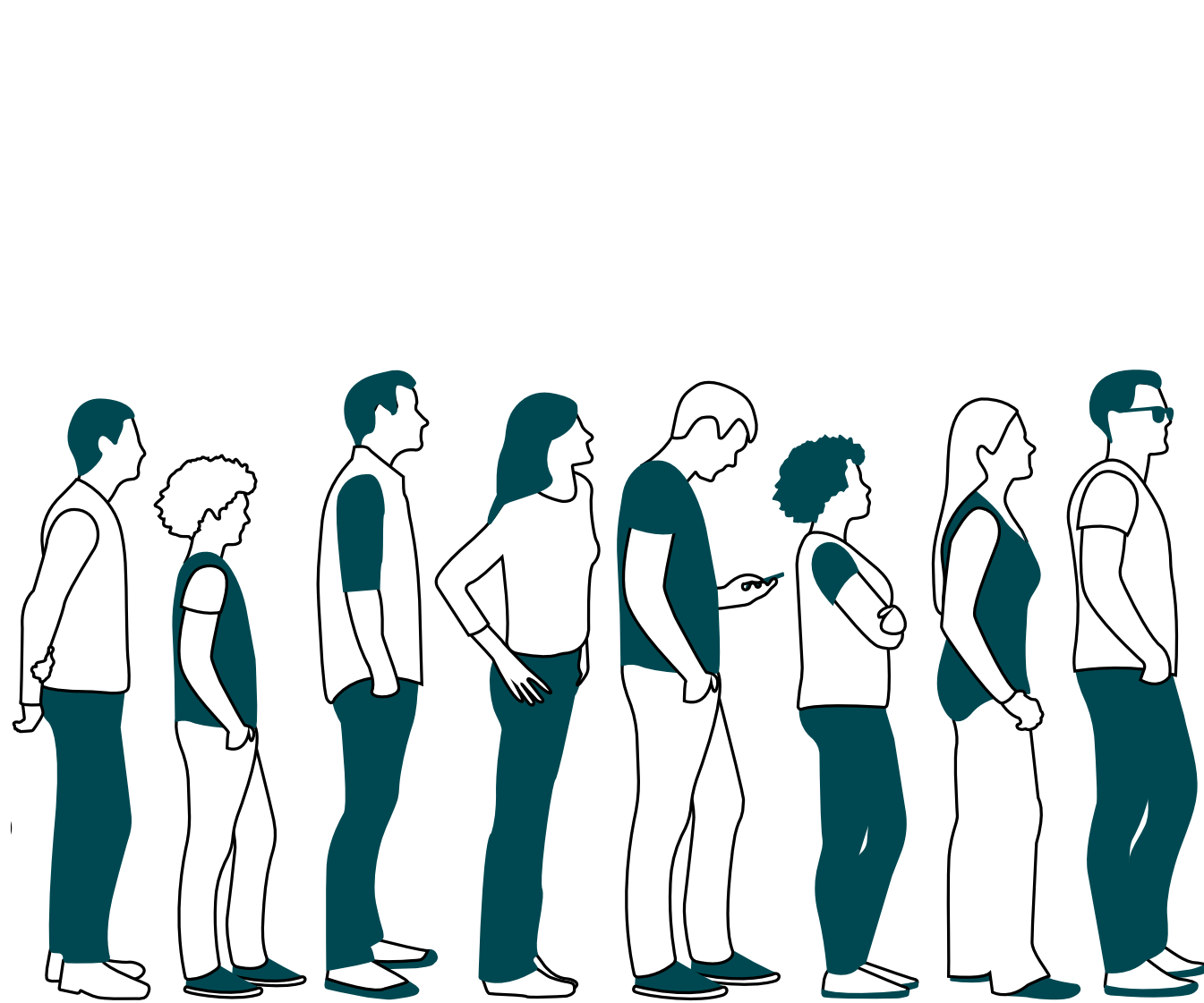
I WILL WALK TO THE ENTRANCE AND WAIT IN LINE.



THE PEPSI PLAZA GATES OPEN AT 1:00 PM.



**I WILL THEN WALK THROUGH SECURITY TO KEEP
MYSELF AND OTHERS SAFE.**



THE STADIUM ONLY ALLOWS CLEAR BAGS.



**WHEN I GET TO THE FRONT OF THE LINE, I WILL SHOW MY
MOBILE TICKET.**



**ONCE INSIDE THE STADIUM, I CAN LOOK FOR FUN
ACTIVITIES ON THE PLAZA.**



I CAN BUY "POPCORN FOR THE PEOPLE" INSIDE THE LOBBY AREA.



**IF I NEED A BREAK WHILE ON THE PLAZA, I CAN GO
TO THE SENSORY ACTIVATION VEHICLE.**



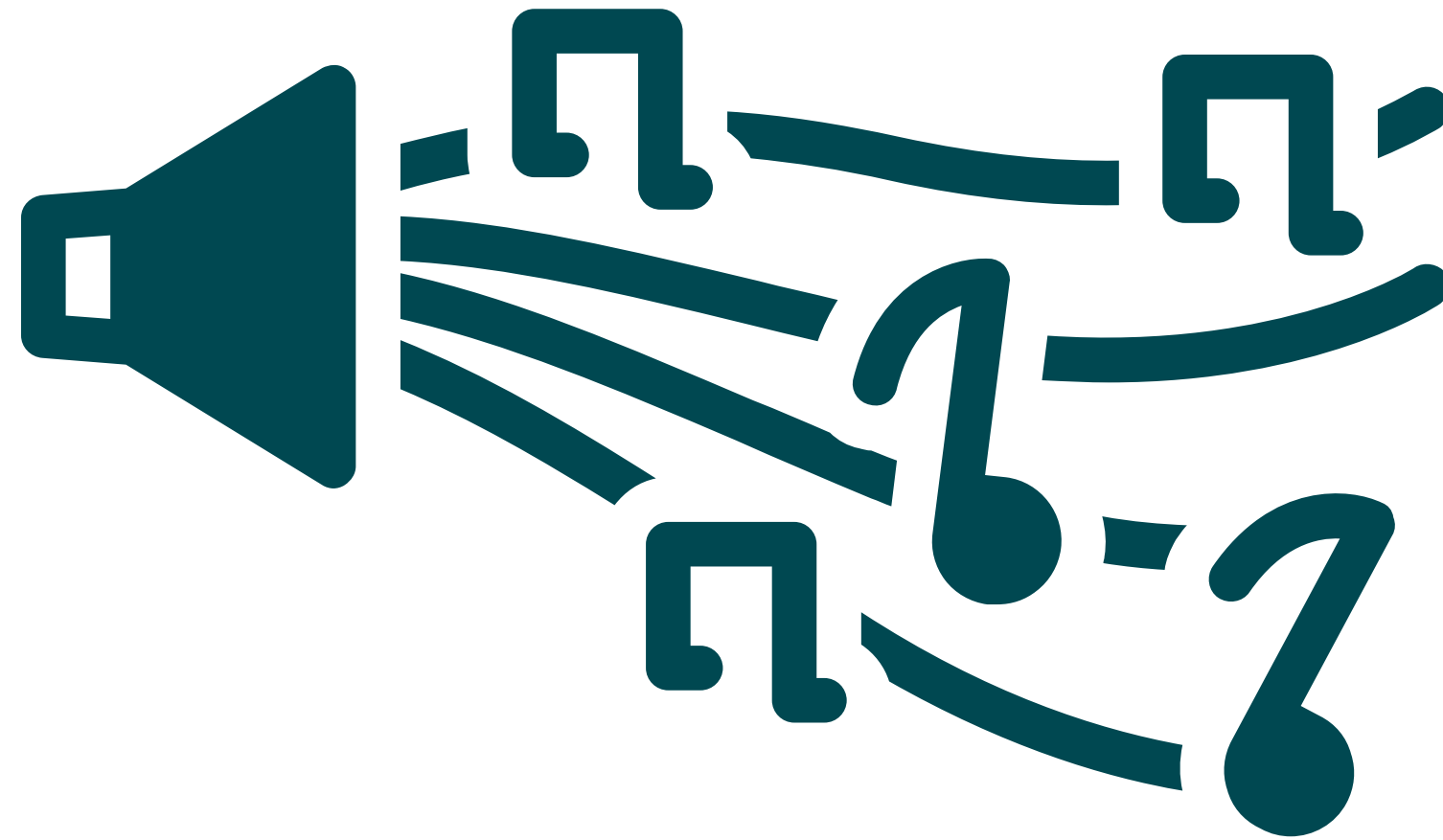
THE CLUB & SUITE GATES OPEN AT 2:00 PM.



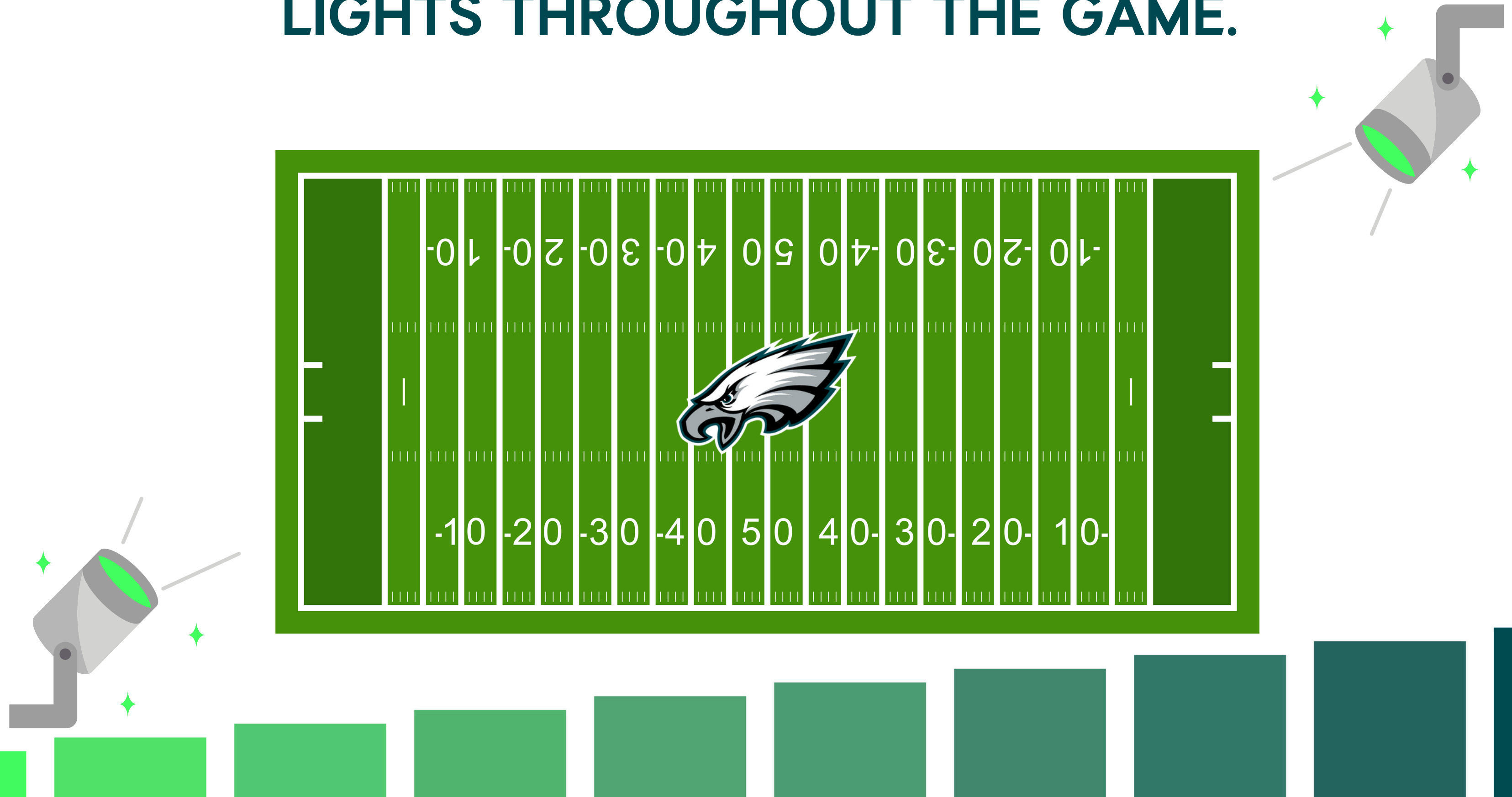
THE INNER STADIUM GATES OPEN AT 2:30 PM.



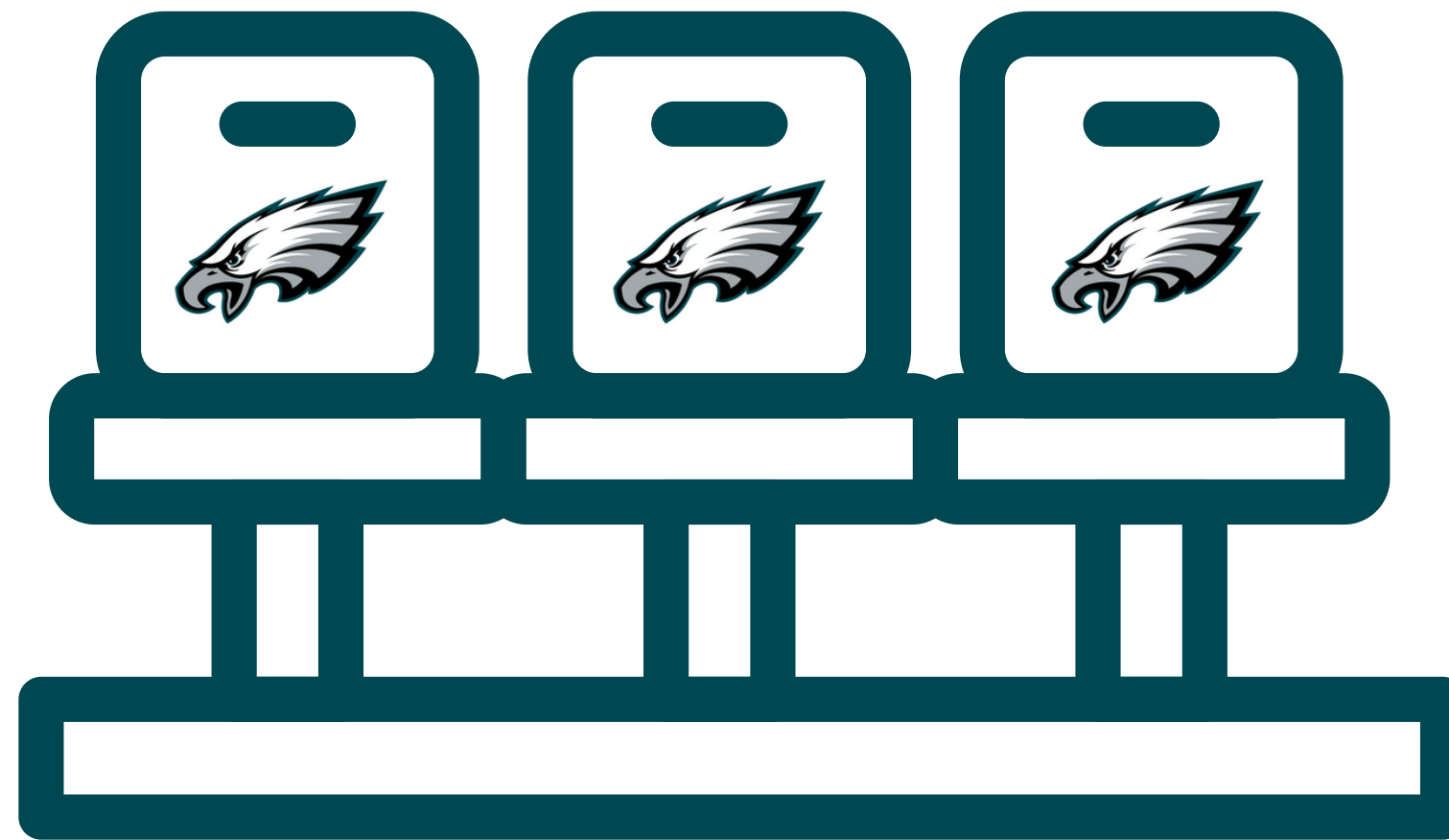
I WILL HEAR LOUD MUSIC, HORNS, AND
WHISTLES AT THE GAME.



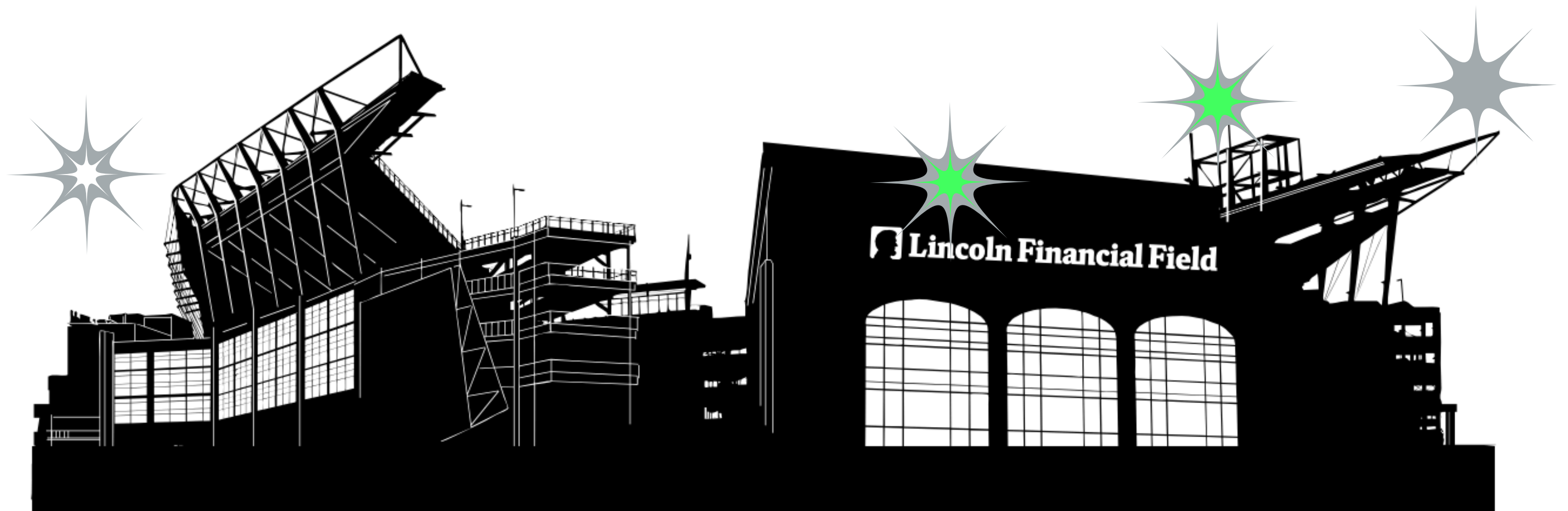
**THERE WILL ALSO BE FLASHING STADIUM
LIGHTS THROUGHOUT THE GAME.**



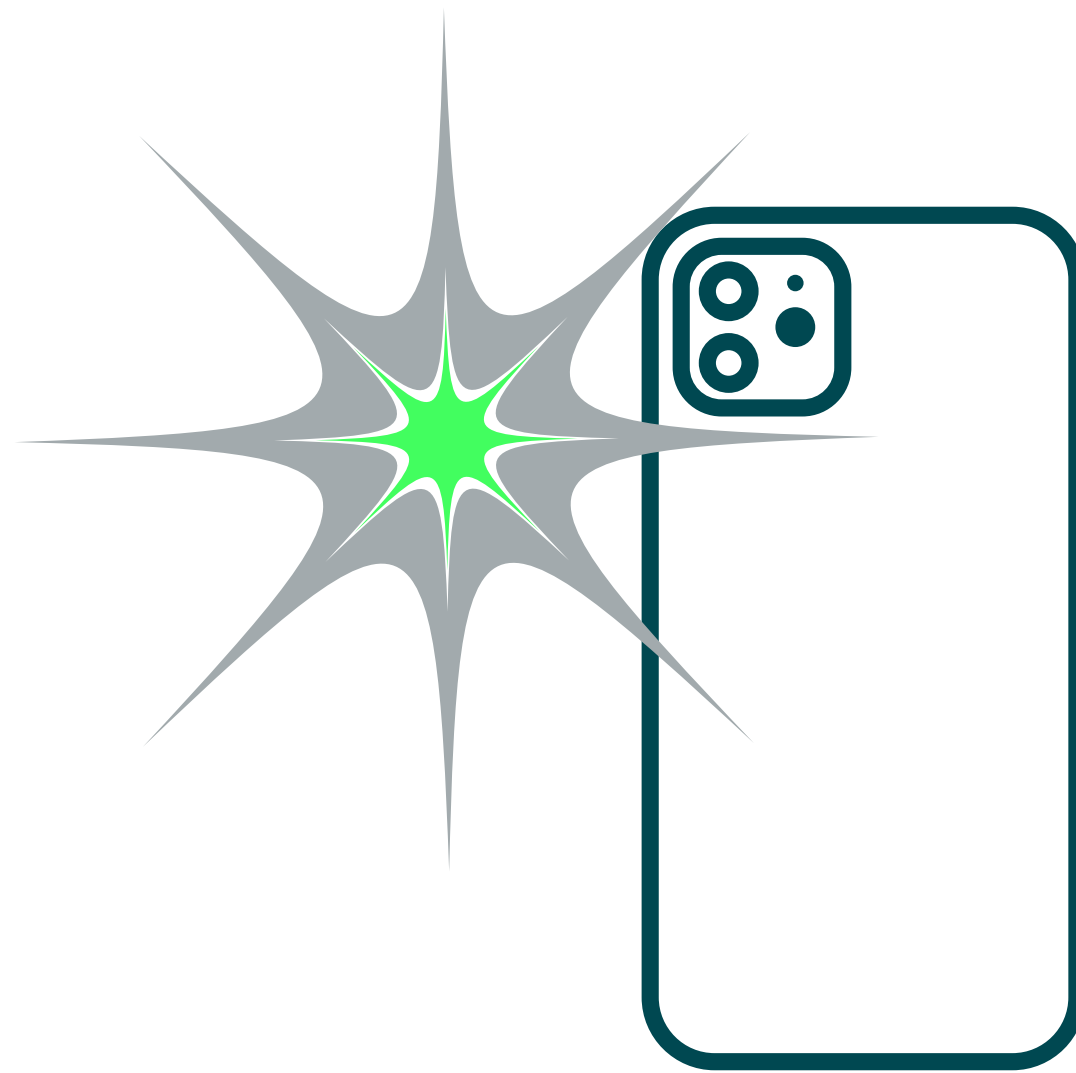
**I CAN START WALKING TO MY SEATS IN MY SECTION TO
WATCH THE GAME.**



**THERE WILL BE A CELL PHONE LIGHT SHOW
BEFORE KICK OFF FROM GUESTS' CELL
PHONES ALL THROUGHOUT THE STADIUM.**



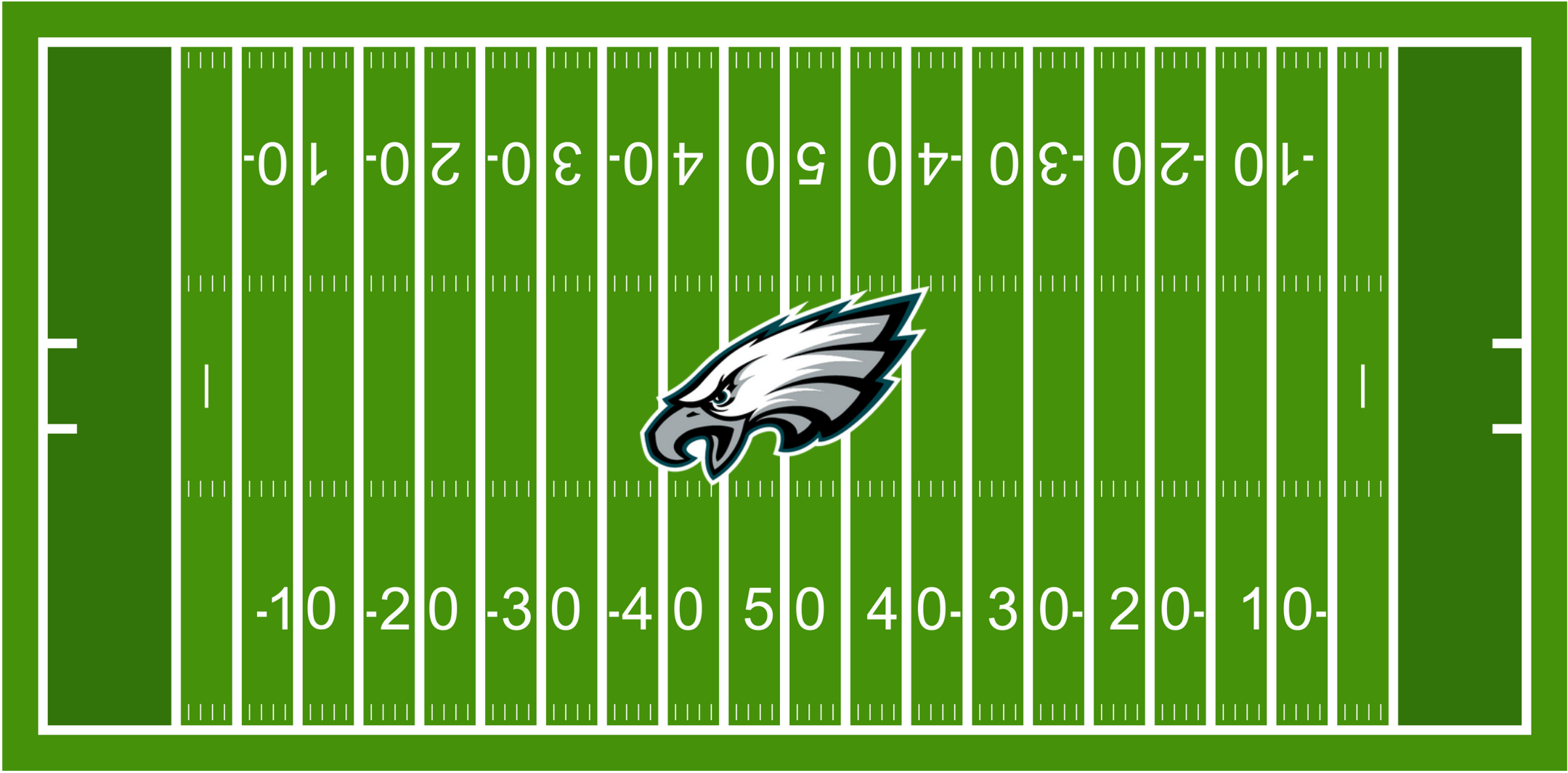
**WHEN I OPEN THE EAGLES APP ON MY PHONE AS THE
TEAM IS WALKING OUT OF THE TUNNEL, IT WILL START
FLASHING.**



I WILL HEAR THE NATIONAL ANTHEM AROUND 4:25 PM.



THE GAME BEGINS AT ABOUT 4:30 PM.



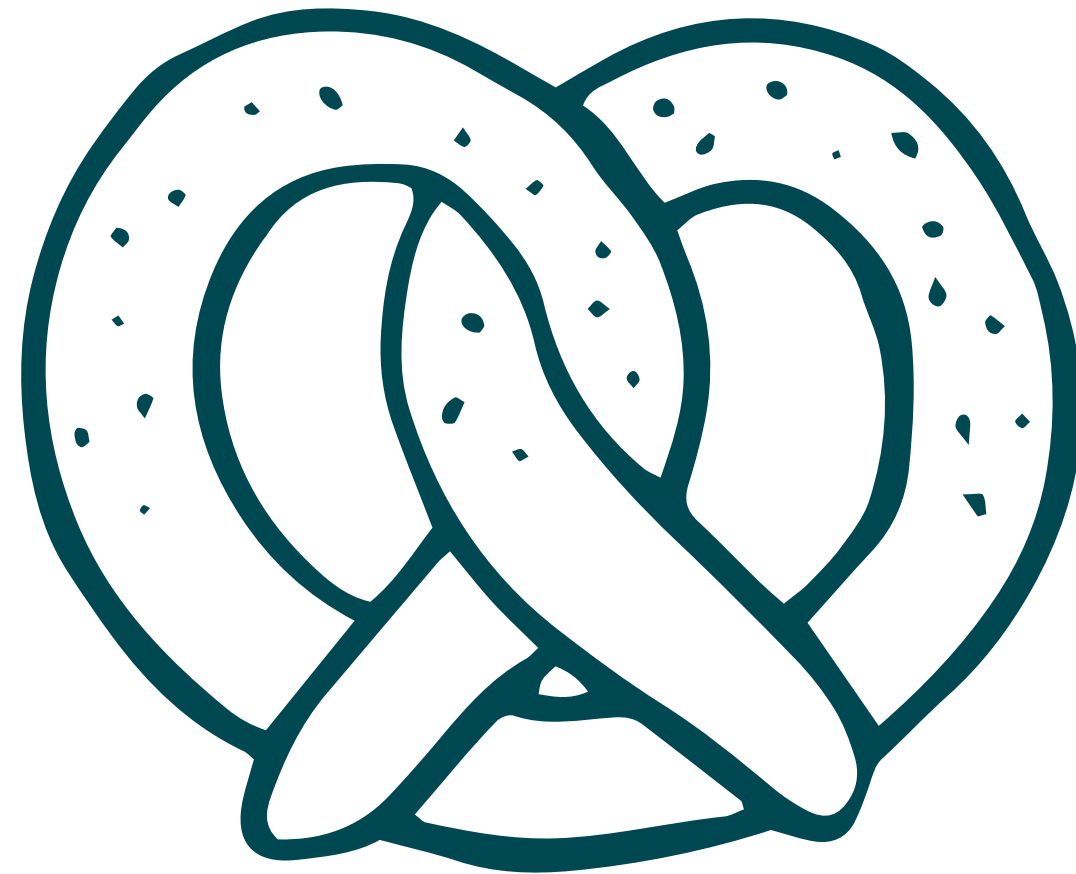
IF I NEED A BREAK OR A SENSORY ITEM, I CAN GO TO GUEST SERVICES BOOTHS LOCATED AT 121, 136, 206, 226.



**IF I NEED A LONGER BREAK I CAN GO TO THE SENSORY
ROOM ON THE WEST LOWER SUITE LEVEL ACCESSED
THROUGH ELEVATORS NEAR SECTIONS 105/205.**



**IF I AM HUNGRY OR THIRSTY, I CAN BUY FOOD OR DRINK
ON THE MAIN CONCOURSE.**



IF I HAVE ANY QUESTIONS, I CAN ASK A STAFF MEMBER.



HAVE FUN AND GO EAGLES!

