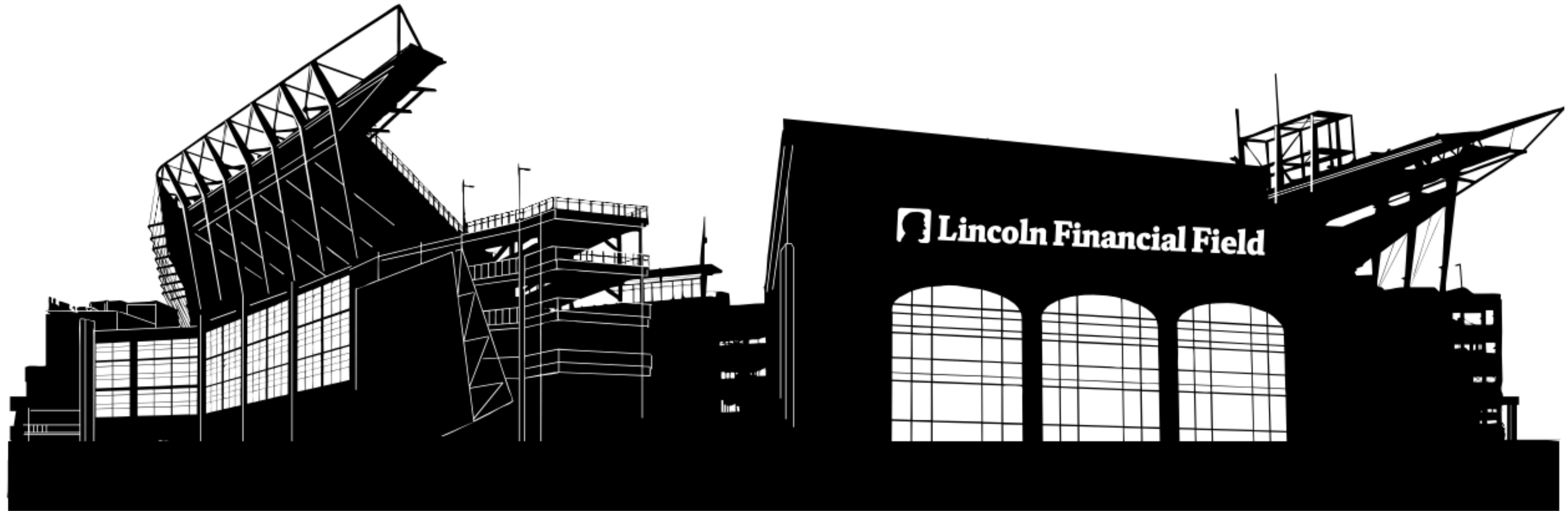


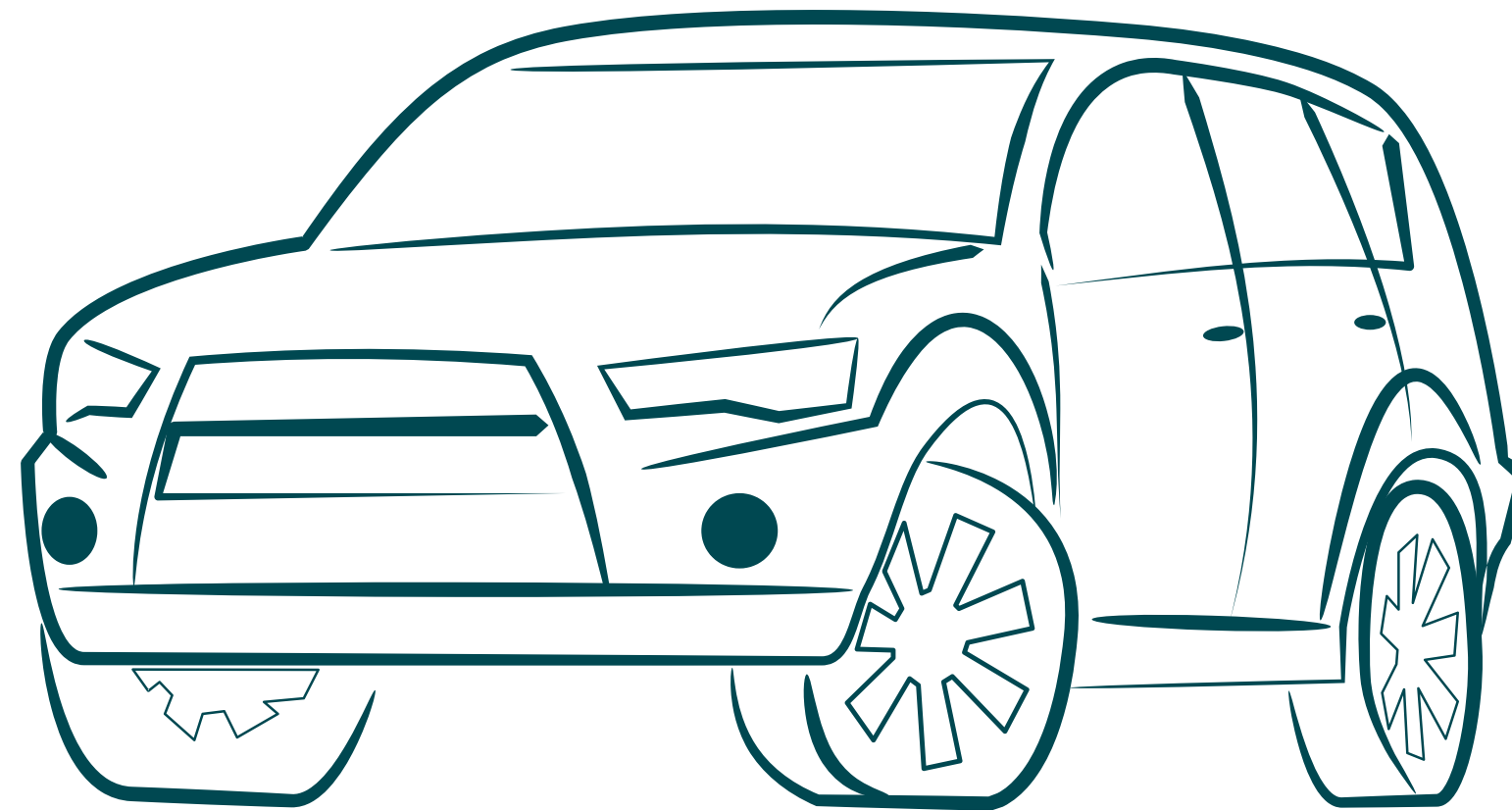


GAMEDAY VISUAL SCHEDULE

**TODAY I AM GOING TO A GAME AT LINCOLN FINANCIAL
FIELD.**



WHEN I ARRIVE, PARK THE CAR IN THE PARKING LOT.



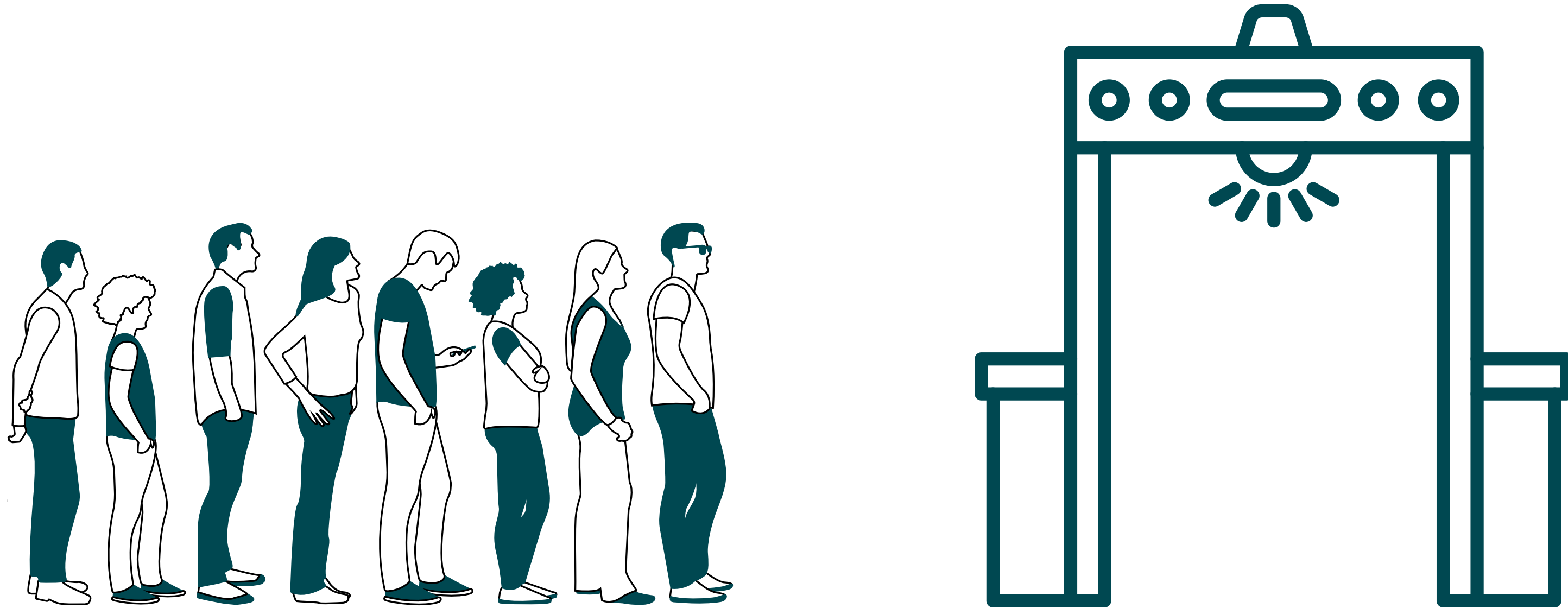
I WILL WALK TO THE ENTRANCE AND WAIT IN LINE.



THE PEPSI PLAZA GATES OPEN AT 10:00 AM.



**I WILL THEN WALK THROUGH SECURITY TO KEEP
MYSELF AND OTHERS SAFE.**



THE STADIUM ONLY ALLOWS CLEAR BAGS.



**WHEN I GET TO THE FRONT OF THE LINE, I WILL SHOW MY
MOBILE TICKET.**



**ONCE INSIDE THE STADIUM, I CAN LOOK FOR FUN
ACTIVITIES ON THE PLAZA.**



I CAN BUY "POPCORN FOR THE PEOPLE" INSIDE THE LOBBY AREA.



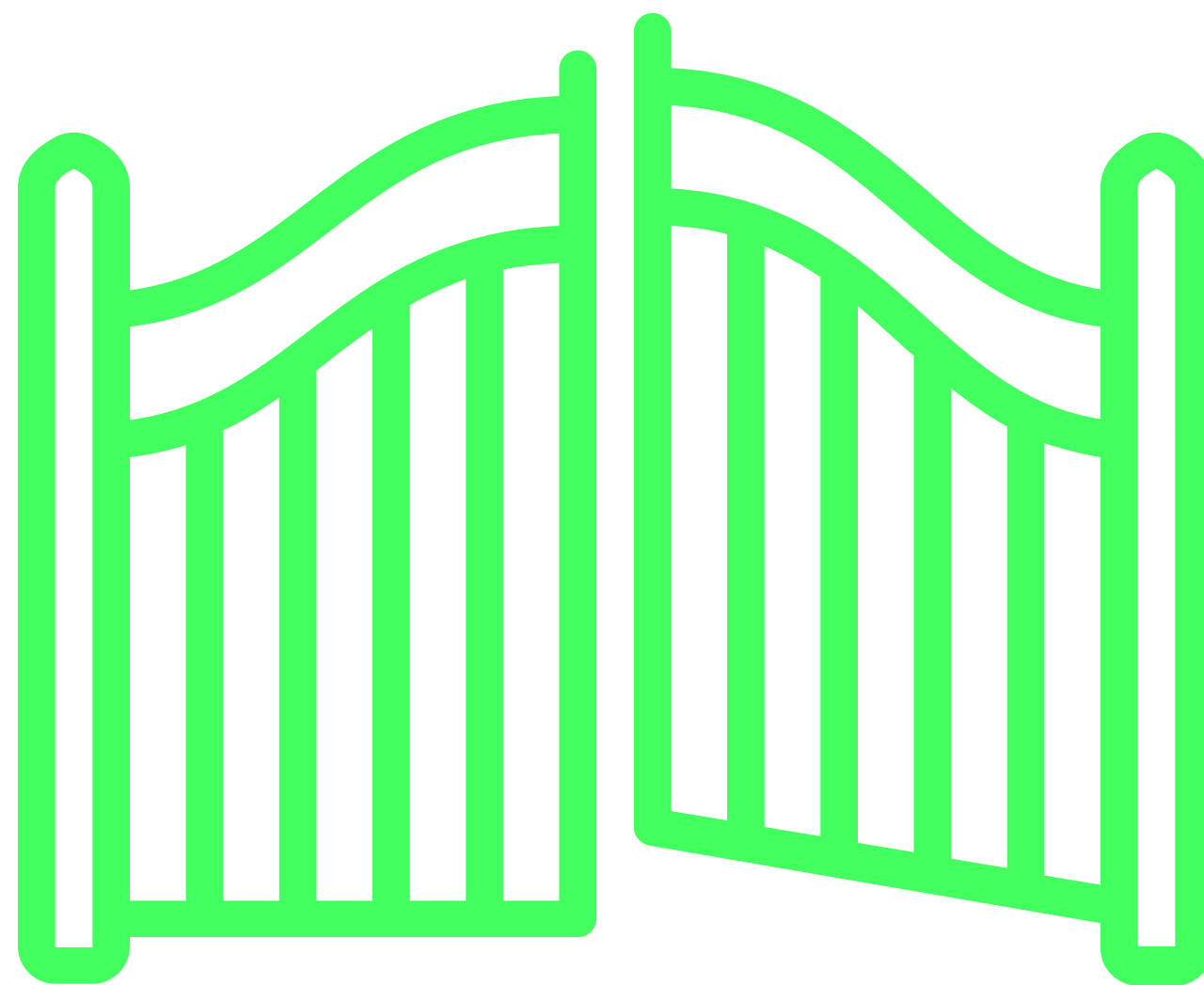
IF I NEED A BREAK FROM THE ACTION ON THE PLAZA, I CAN VISIT THE SENSORY ACTIVATION VEHICLE LOCATED ON THE WEST SIDE OF THE PLAZA.



THE CLUB SUITE GATES OPEN AT 11:00 AM.



THE INNER STADIUM GATES OPEN AT 11:30 AM.



I WILL HEAR LOUD MUSIC, HORNS, AND WHISTLES AT THE GAME.



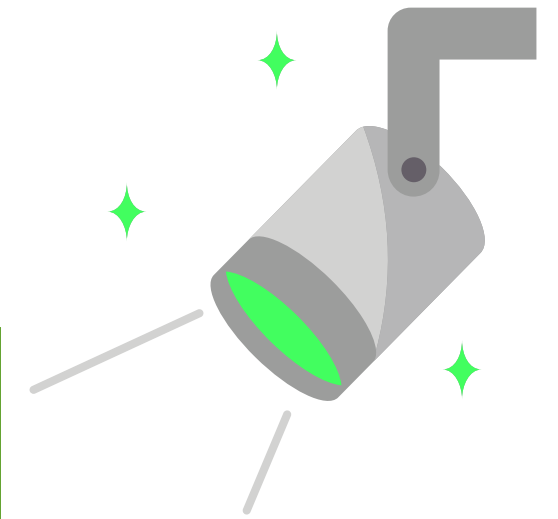
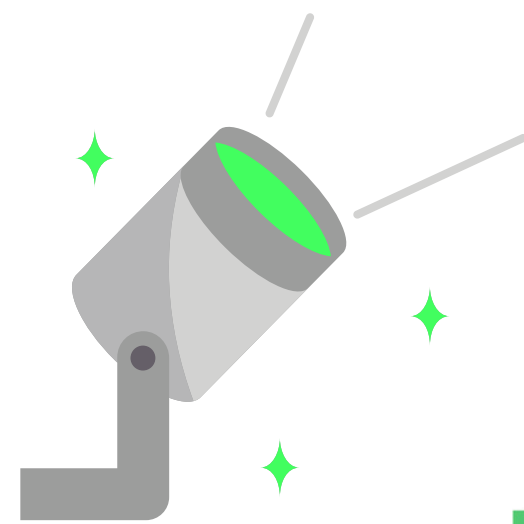
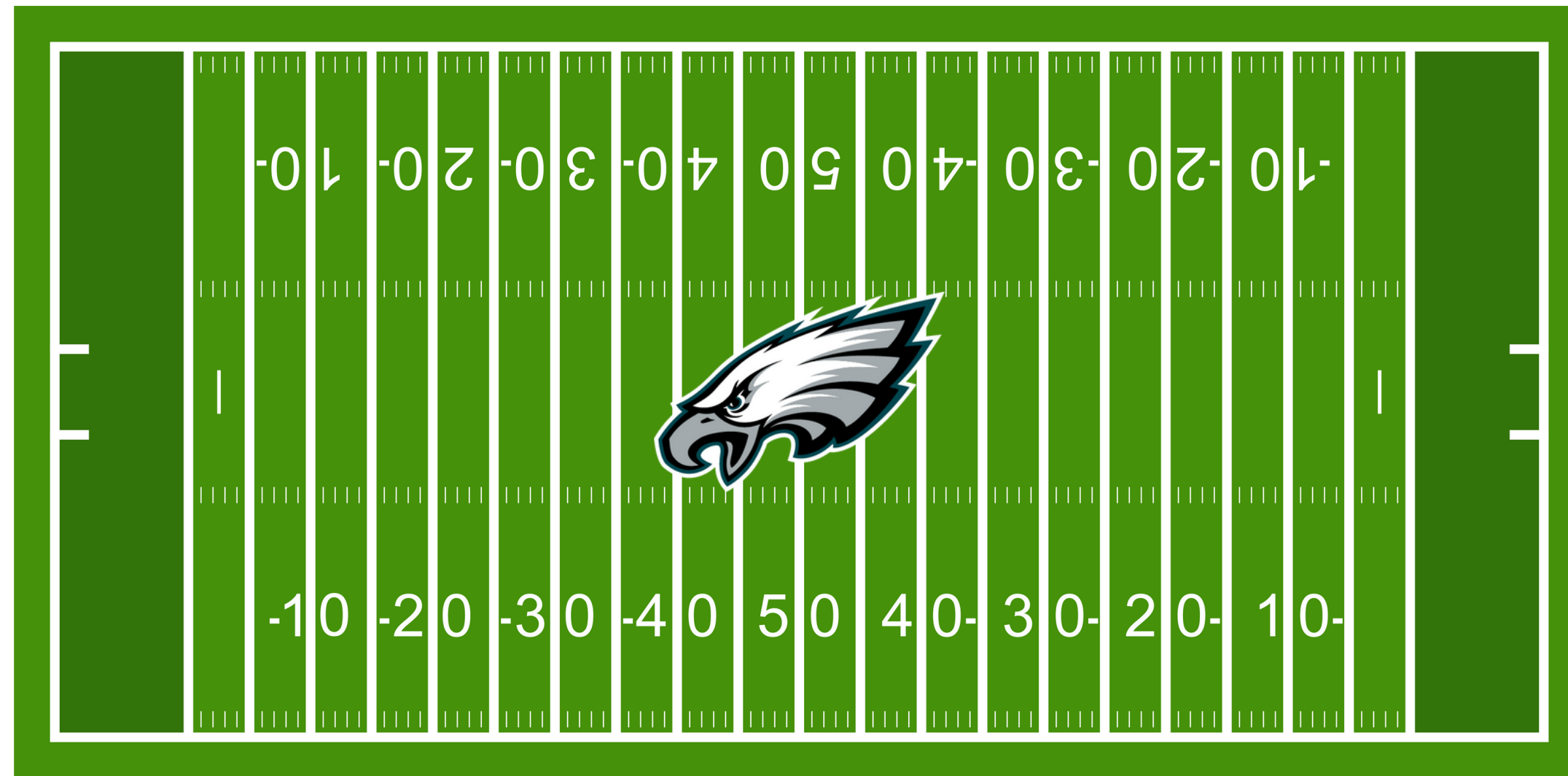
THERE WILL BE GATE FLARES AROUND 12:15.



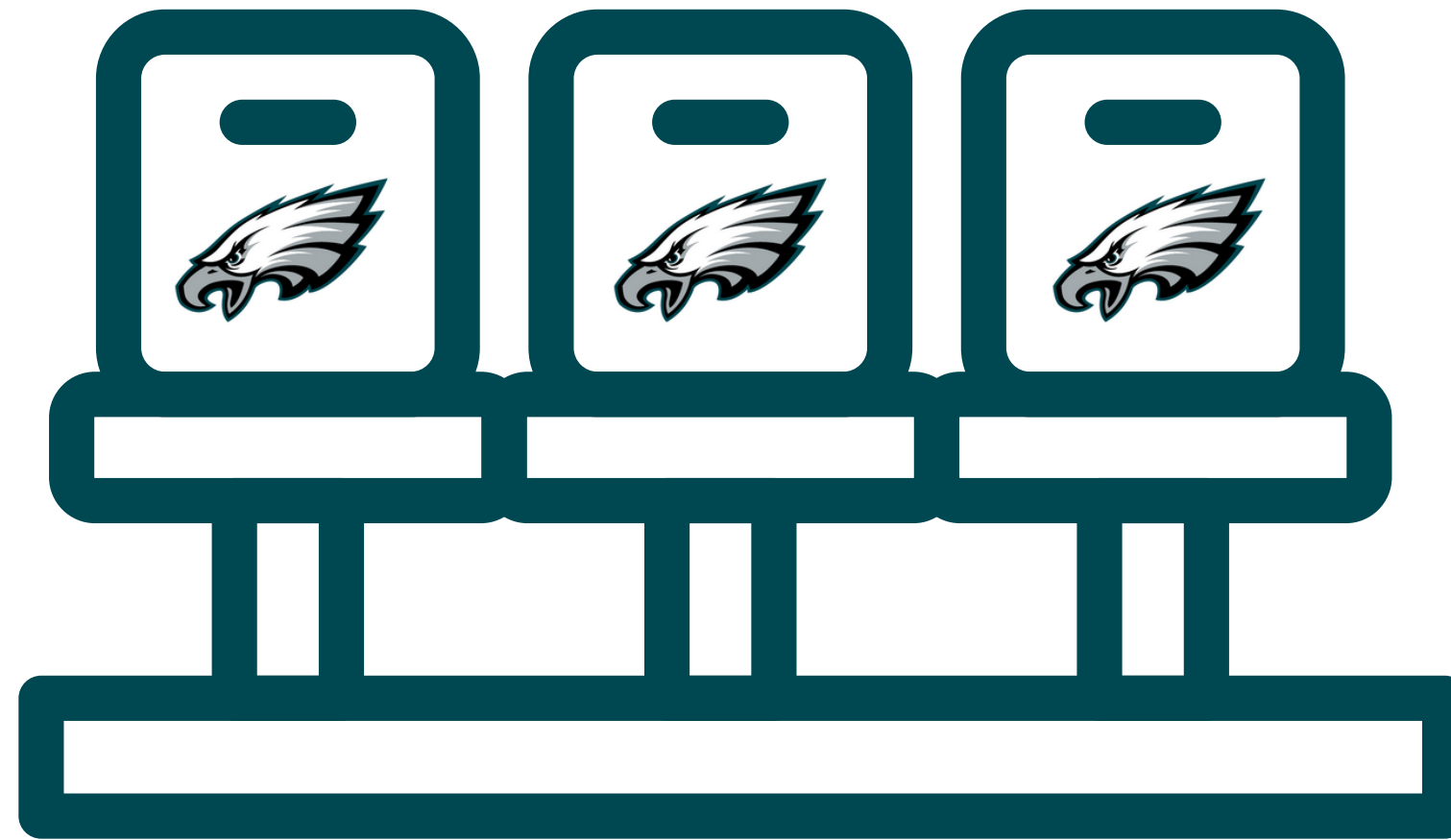
THERE WILL BE FIREWORKS THROUGHOUT THE GAME.



THERE WILL ALSO BE FLASHING STADIUM LIGHTS THROUGHOUT THE GAME.



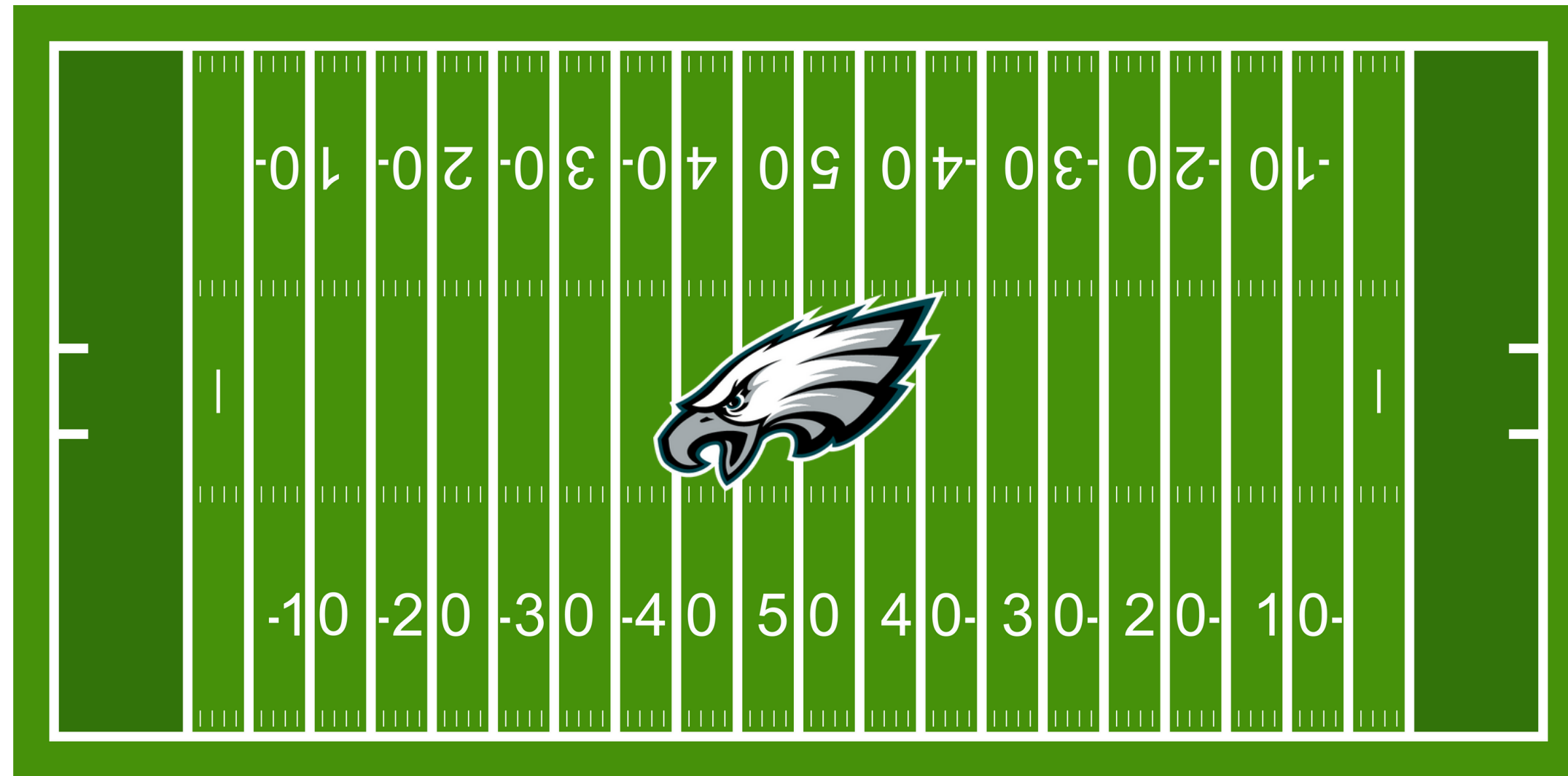
I CAN START WALKING TO MY SEATS IN MY SECTION TO WATCH THE GAME.



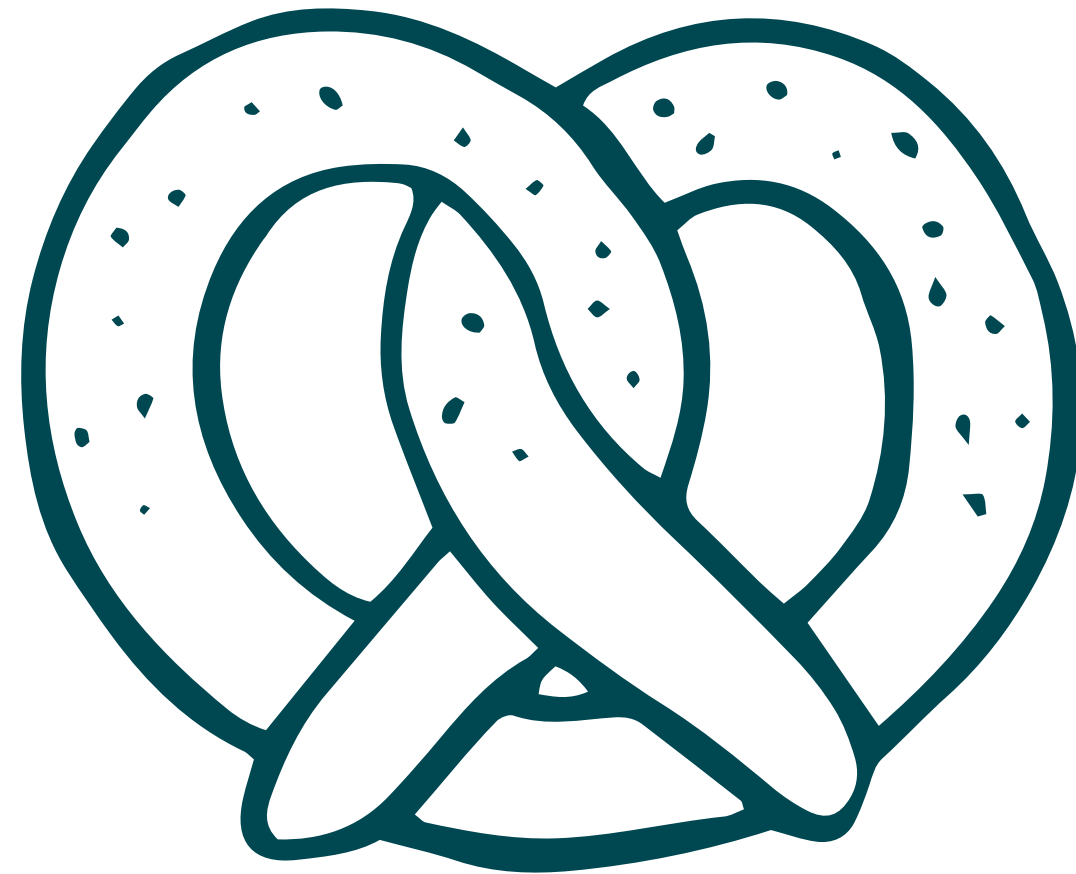
THE NATIONAL ANTHEM WILL HAPPEN AROUND 12:55 PM.



THE GAME BEGINS AROUND 1:05 PM.



**IF I AM HUNGRY OR THIRSTY, I CAN BUY FOOD OR DRINK
ON THE MAIN CONCOURSE.**



IF I NEED A BREAK OR A SENSORY ITEM, I CAN GO TO GUEST SERVICES BOOTHS LOCATED AT 121, 136, 206, 226.



IF I NEED A LONGER BREAK I CAN GO TO THE SENSORY ROOM ON THE WEST LOWER SUITE LEVEL ACCESSED THROUGH ELEVATORS NEAR SECTION 105/205 OR THE SENSORY VEHICLE STATIONED ON PEPSI PLAZA .



IF I HAVE ANY QUESTIONS, I CAN ASK A STAFF MEMBER.



HAVE FUN AND GO EAGLES!

