



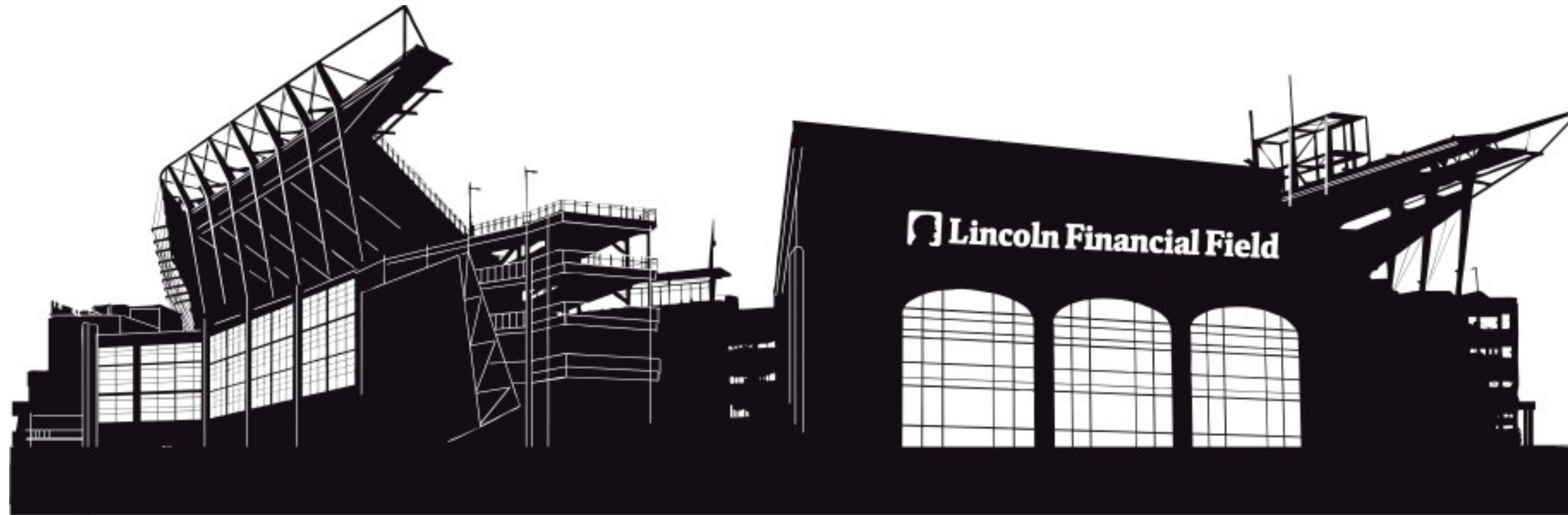


EAGLES 
HUDDLE 
FOR AUTISM



VISUAL SCHEDULE

**TODAY, I AM GOING TO HUDDLE UP FOR AUTISM AT
LINCOLN FINANCIAL FIELD.**



DO NOT FORGET TO WEAR MY EAGLES GEAR



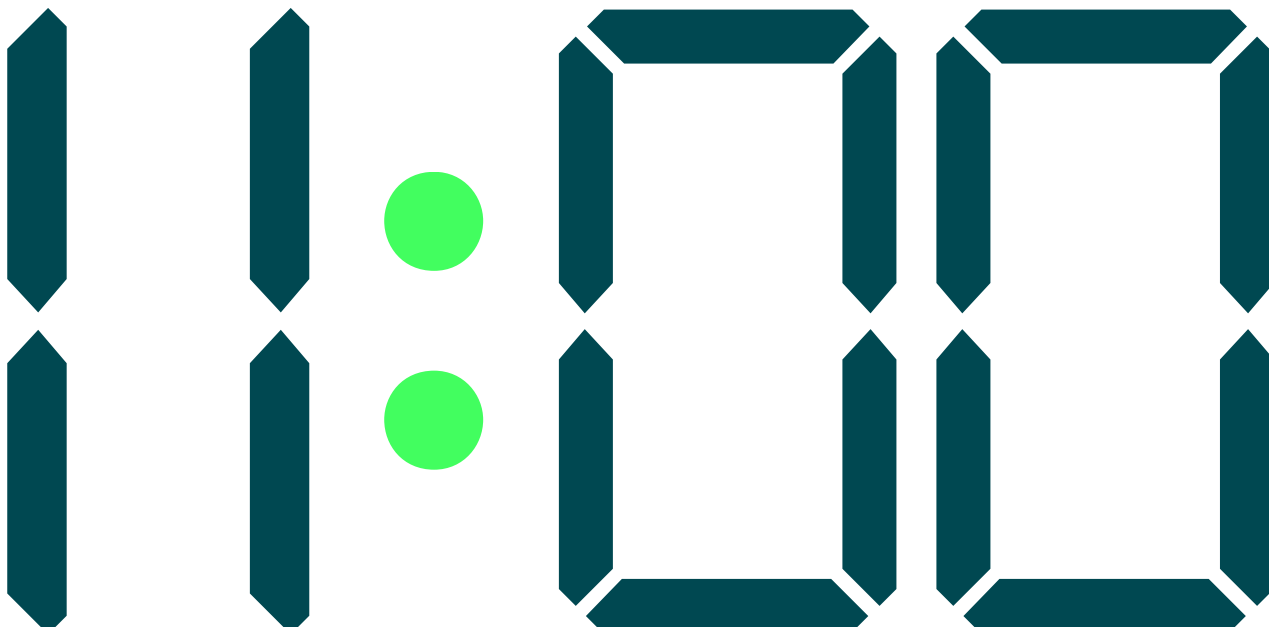
PARK THE CAR.



WALK TO THE STADIUM.



**IF I HAVE A VIP TICKET, I CAN ENTER THE VIP GATE AT
11:00 AM.**

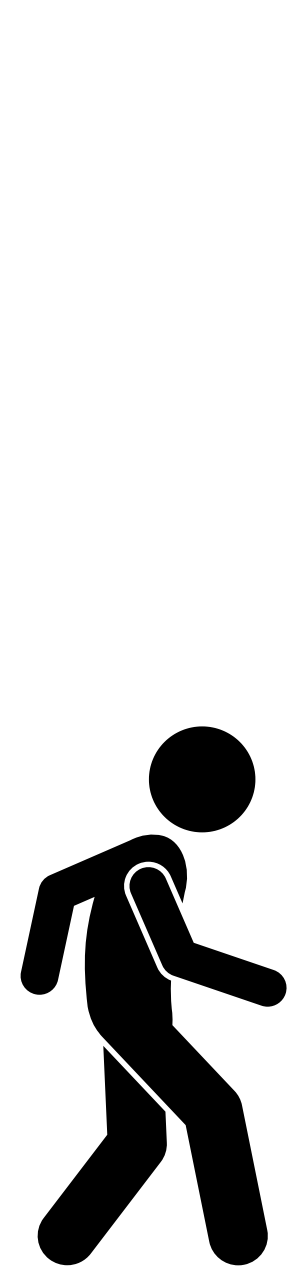


**IF I HAVE A GENERAL ADMISSION TICKET, I CAN ENTER
THE GATE AT 11:30 AM.**

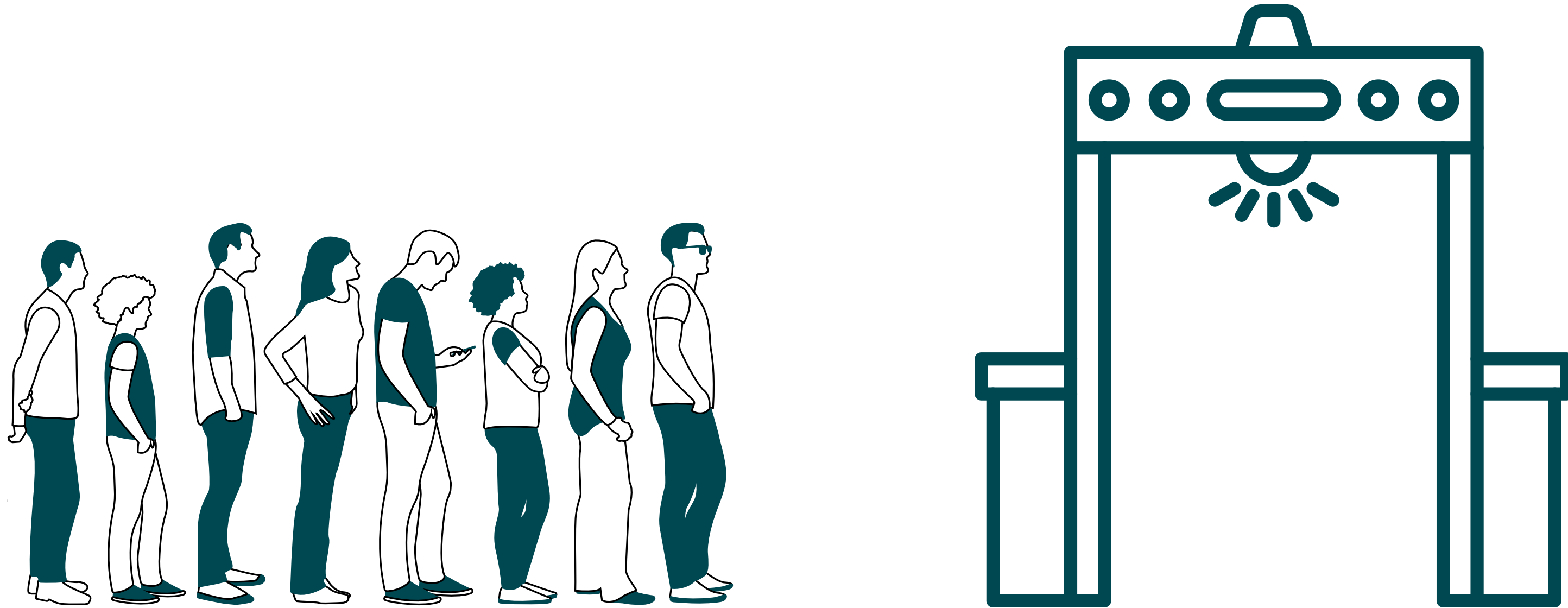
11:30



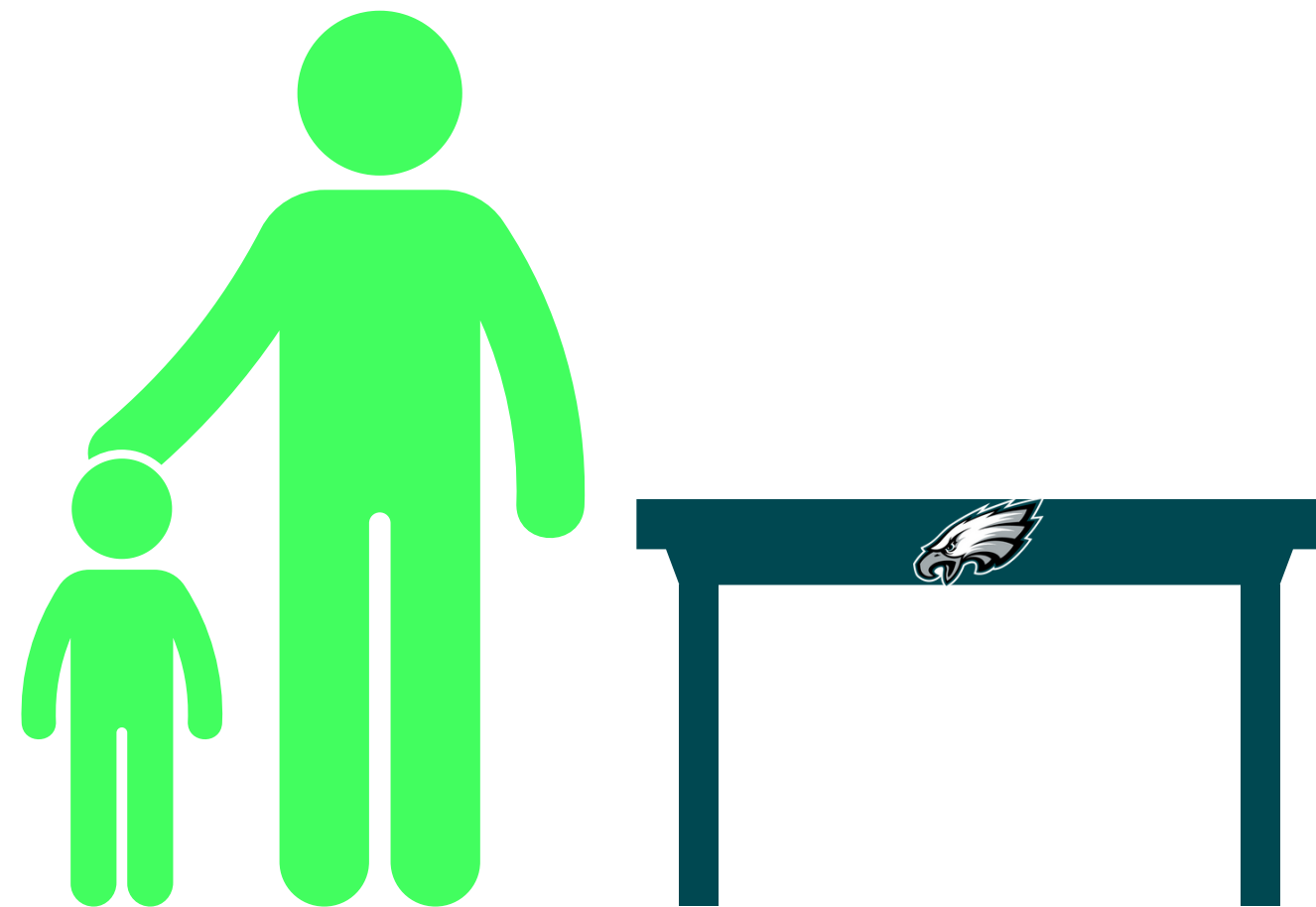
ENTER AT THE GATE



**I WILL THEN WALK THROUGH SECURITY TO KEEP
MYSELF AND OTHERS SAFE.**



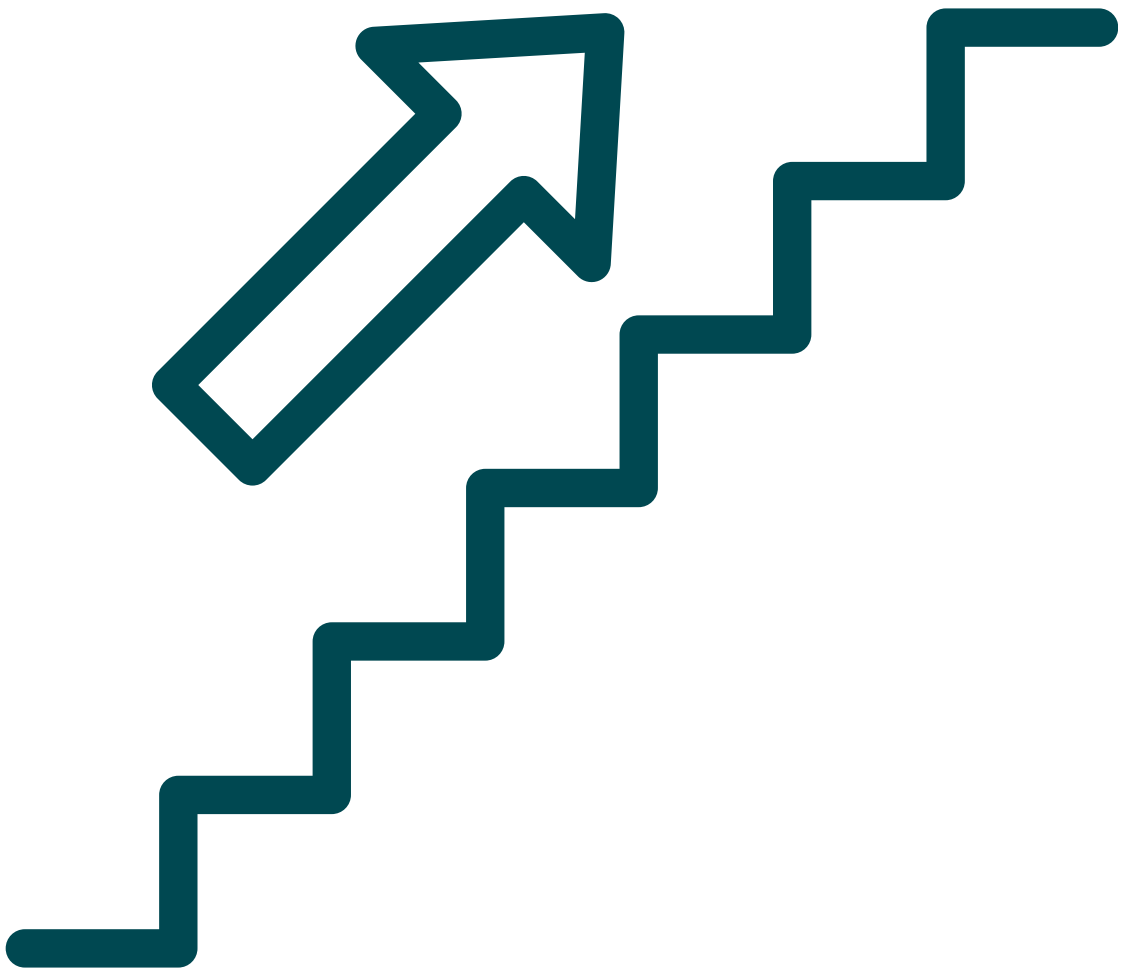
GO TO REGISTRATION TABLE AND FILL OUT A WAIVER IF MY FAMILY DID NOT DO IT ONLINE.



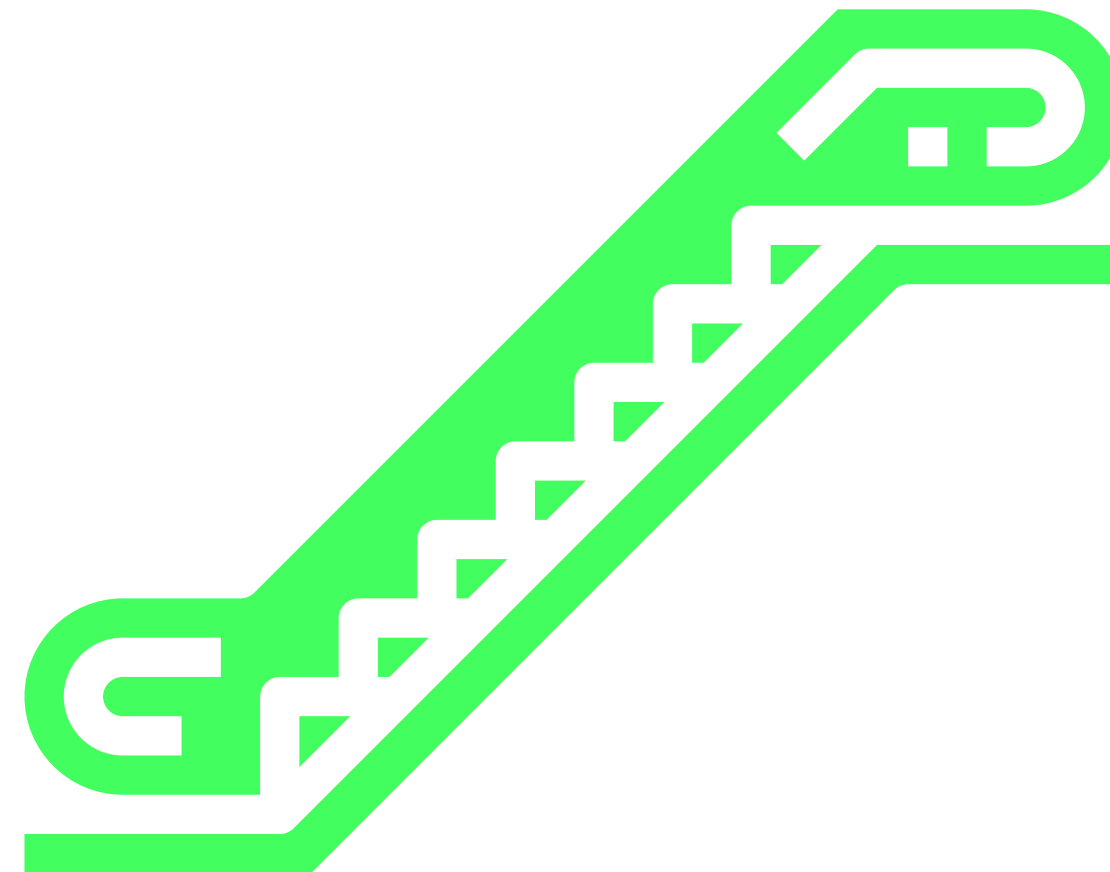
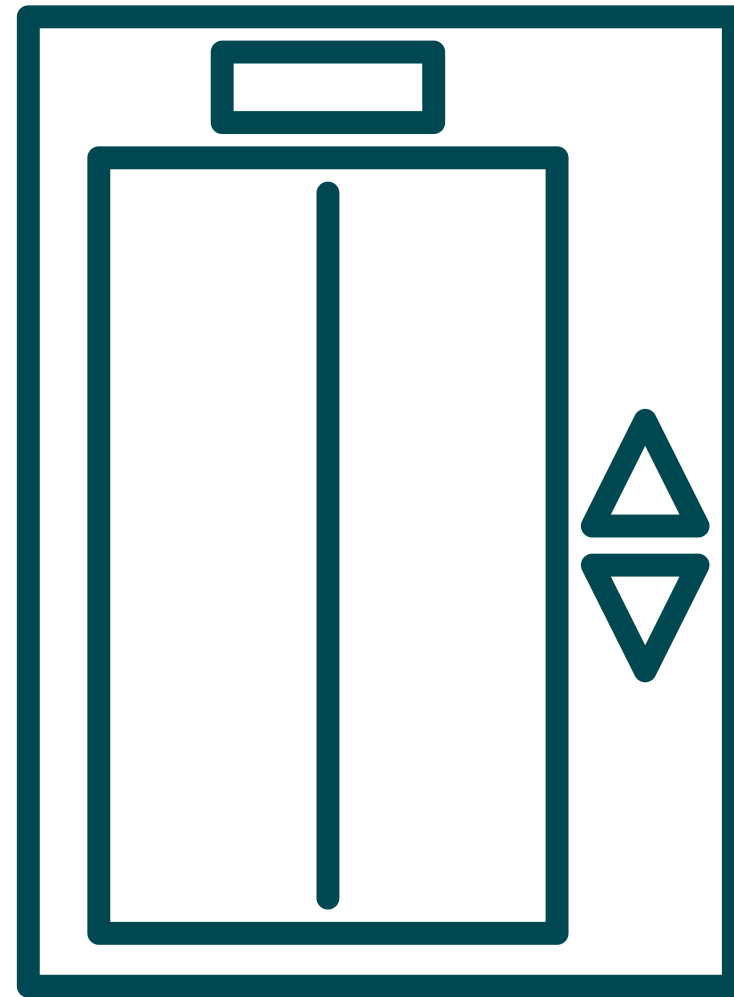
MY FAMILY WILL SIGN THE WAIVER



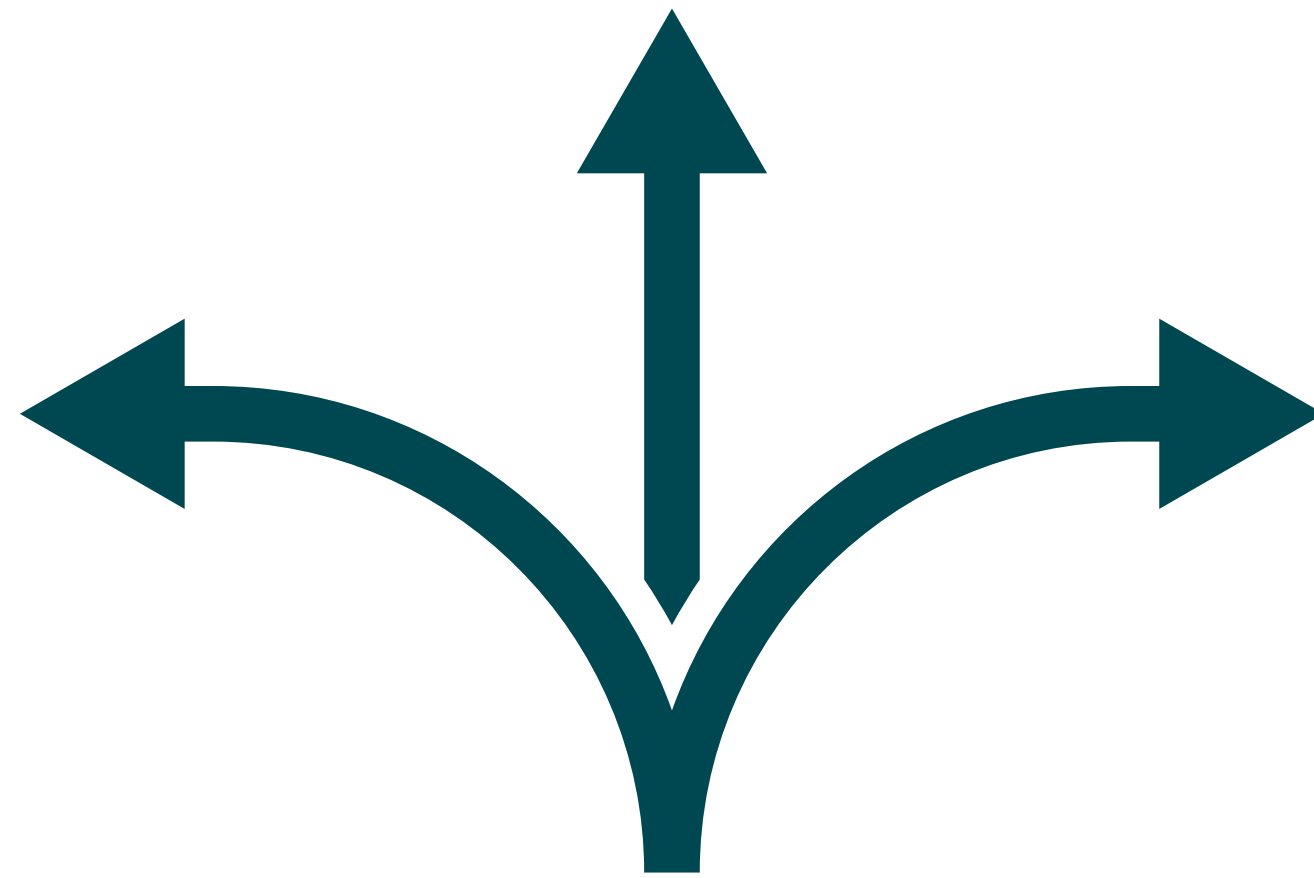
THEN I CAN GO UPSTAIRS TO THE ACTIVITIES



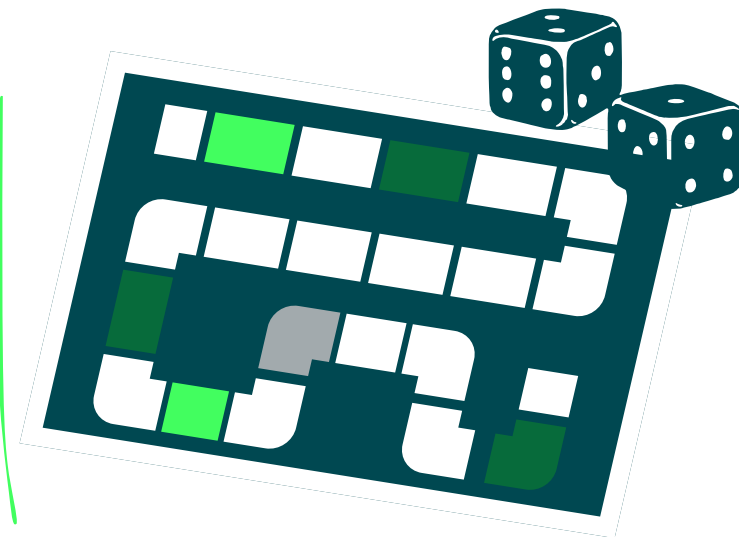
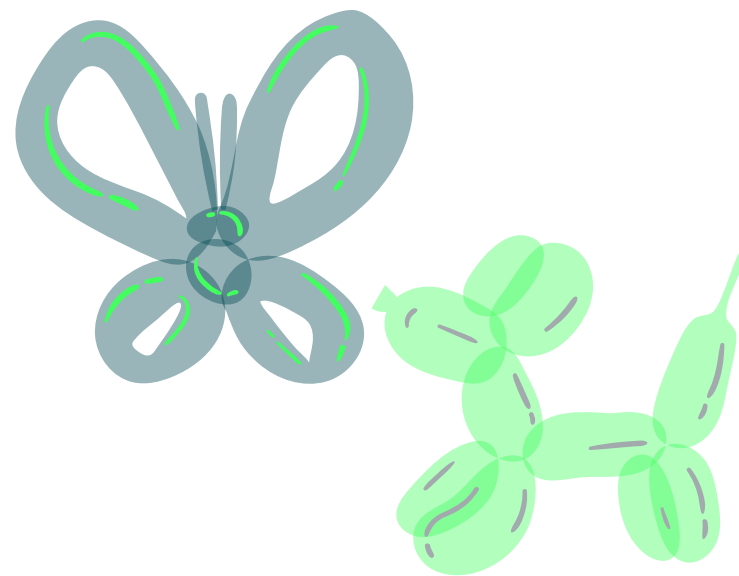
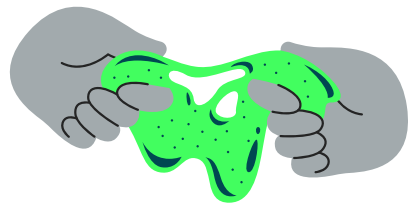
I CAN TAKE THE ELEVATOR OR ESCALATOR



**IN THE TORK CLUB, I CAN DO THE FOLLOWING ACTIVITIES AND
ALSO VISIT THE MAIN STAGE:**



I CAN MAKE SLIME, LEARN ABOUT CHOP, BUY POPCORN, DO THE DRIVING SIMULATOR, MAKE FRIENDSHIP BRACELETS, TAKE PHOTOS, MAKE WAX HANDS/BALLOONS, PLAY BOARD GAMES AND GET MY FACE PAINTED.



AT THE PHOTO STATION, A CHEERLEADER, SWOOP, OR A FOOTBALL PLAYER MAY STOP BY.



IF I AM IN LINE TO TAKE A PHOTO, AND SEE A CHEERLEADER, SWOOP, OR A PLAYER, I SHOULD FOLLOW DIRECTIONS TO TAKE THE PHOTO AND EXIT THE LINE. THIS WAY I CAN MAKE SPACE FOR MORE FRIENDS THAT ARE ALSO IN LINE.



I SHOULD ONLY TAKE A PHOTO AND NOT ASK FOR AN AUTOGRAPH. AUTOGRAPHS WERE FOR CERTAIN FUNDRAISERS, BUT THATS OKAY! I CAN STILL SEE THE PLAYERS IN THE PHOTO BOOTH AND ON THE MAIN STAGE.



**I CAN ALSO GO TO THE MAIN STAGE FOR PERFORMANCES AND
A MINI ALL ABILITIES CHEER CLINIC AT 1:00 PM & 2:00 PM
WITH EAGLES CHEERLEADERS.**



I CAN ATTEND A MINI ALL ABILITIES DRUM CLINIC ON THE EAST LOWER SUITE LEVEL AT 1:00 PM AND 2:00 PM TAUGHT BY THE EAGLES DRUMLINE.



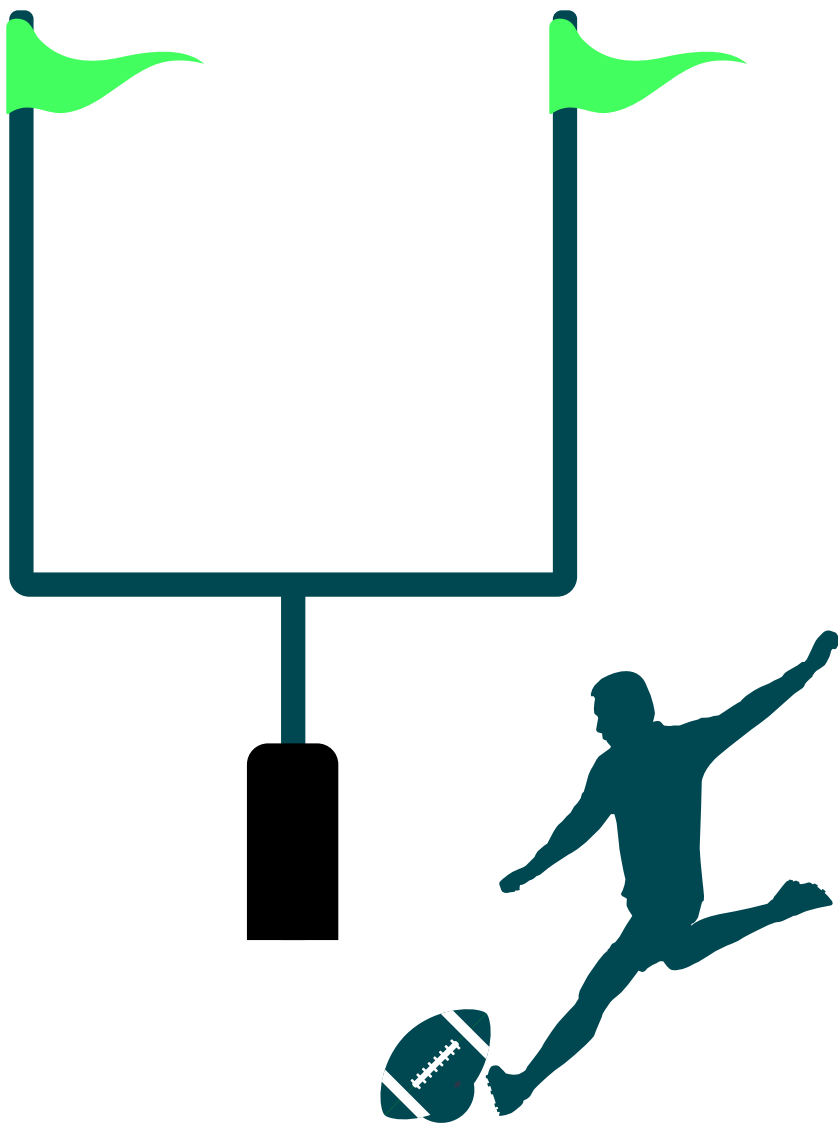
THERE ARE QUIET AREAS ON THE LOWER SUITE LEVEL OF THE TORK CLUB SIDE.



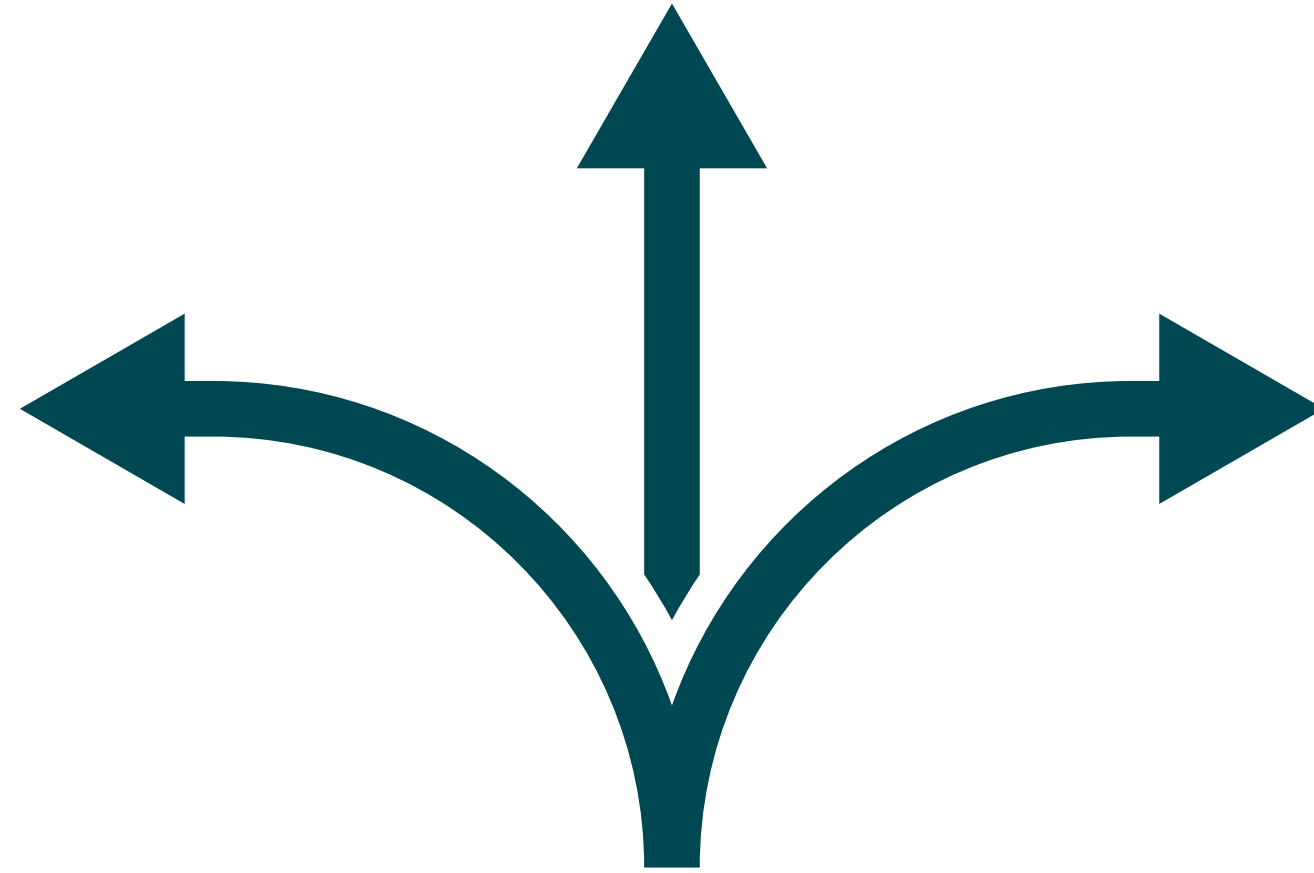
**I CAN WALK ON THE SOUTH MEZZANINE LEVEL TO GET
FROM CLUB TO CLUB.**



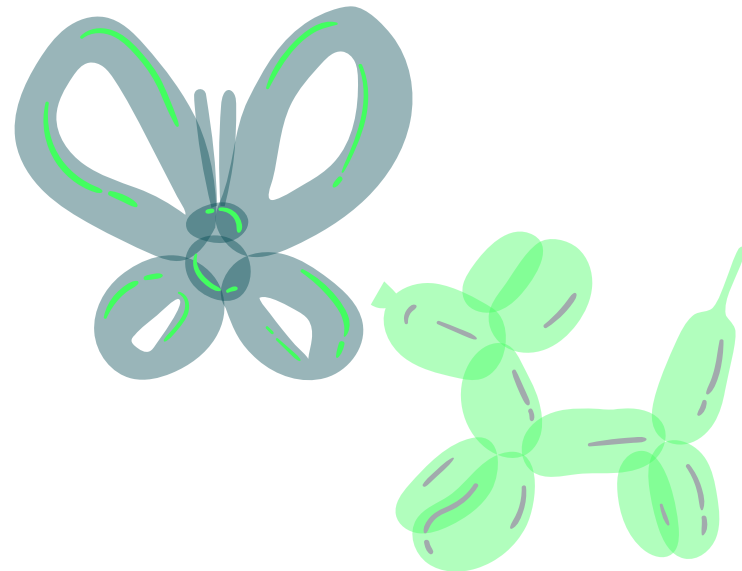
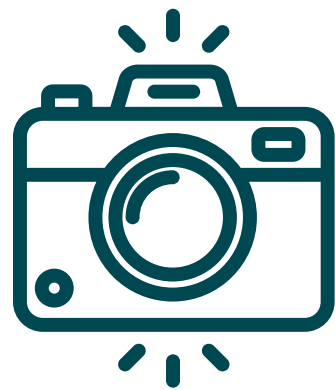
ON THE MEZZANINE LEVEL, THERE IS THE FIELD GOAL CHALLENGE, FOOTBALL TOSS, AND INFLATABLE AXE THROWING.



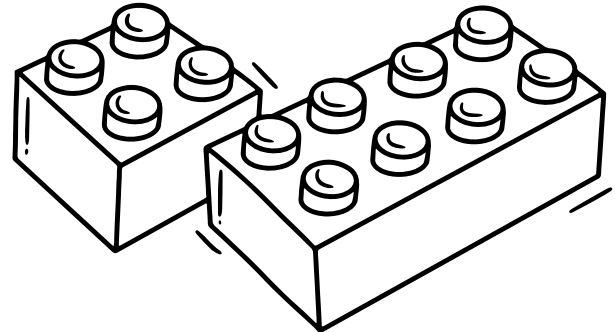
ONCE I GET TO THE HYUNDAI CLUB SIDE, I CAN CHOOSE THE FOLLOWING ACTIVITES.



I CAN TAKE PHOTOS, MAKE WAX HANDS, BALLOONS, LEARN MORE ABOUT CHOP AND OTHER ORGANIZATIONS, PLAY WITH LEGOS AND GET MY FACE PAINTED.



 Children's Hospital of Philadelphia®
Center for Autism Research



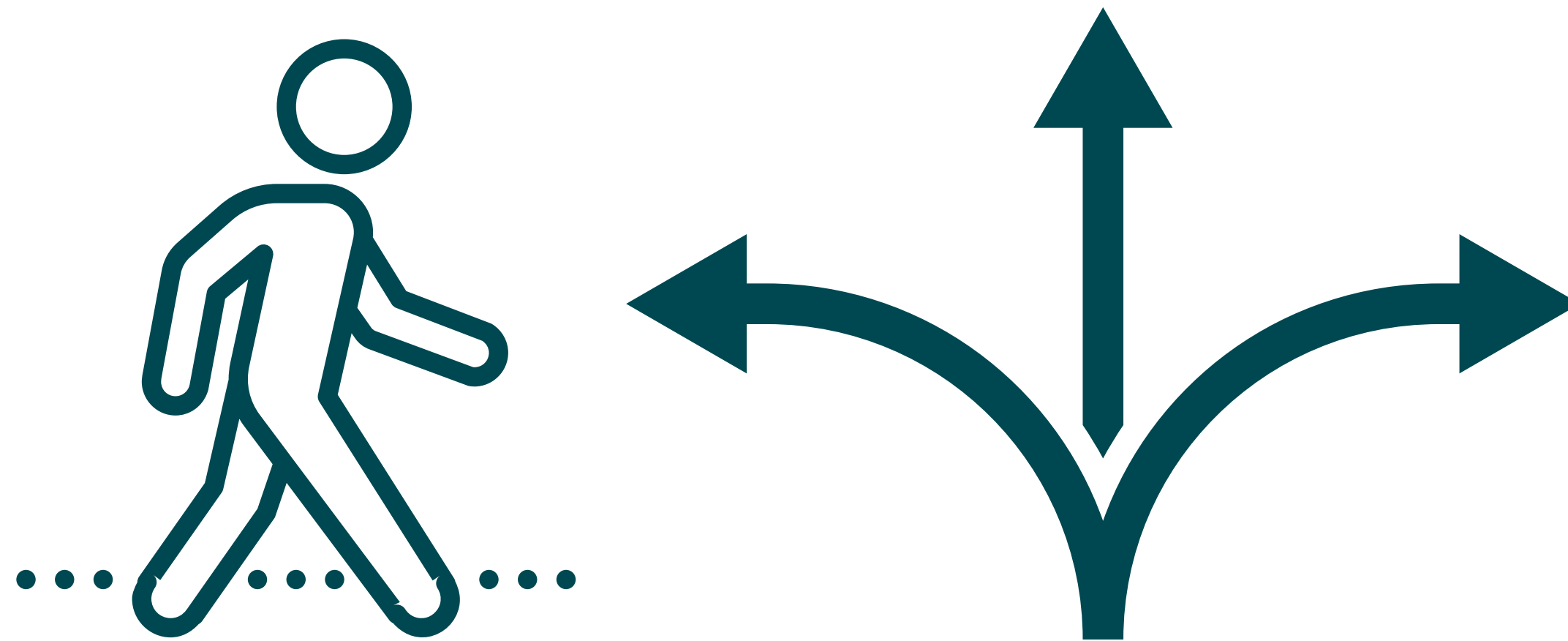
I CAN PURCHASE FOOD IN THE HYUNDAI AND TORK CLUB



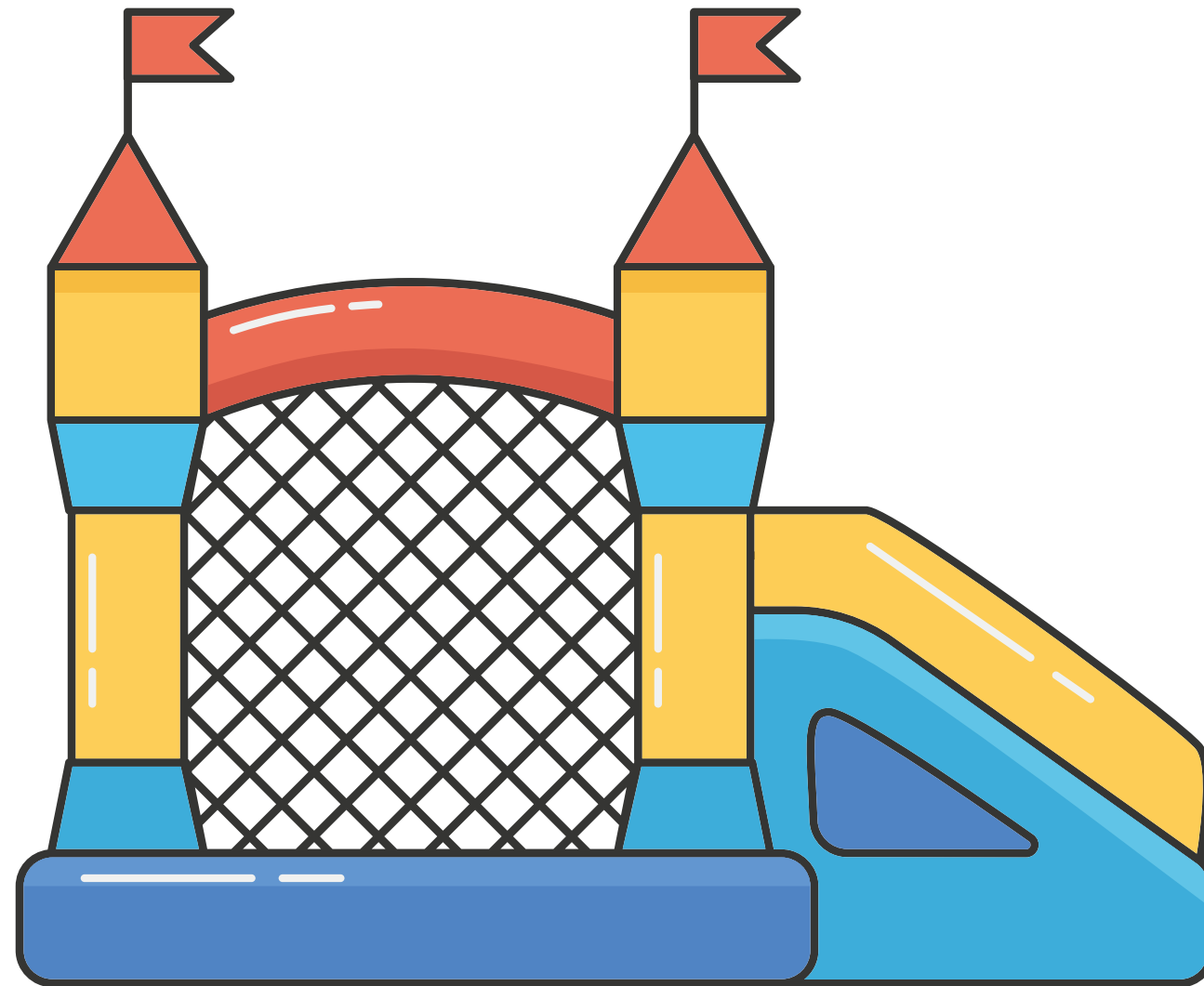
IF I NEED A BREAK, I CAN VISIT THE SENSORY ROOM OR QUIET ROOMS ON THE WEST LOWER SUITE LEVEL.



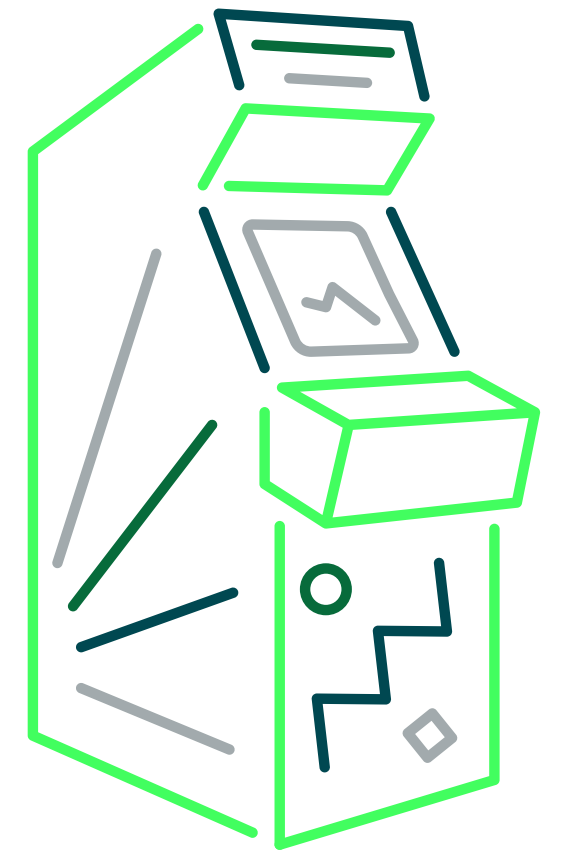
**NEXT I CAN WALK TO THE SERVICE LEVEL FOR MORE
ACTIVITIES!**



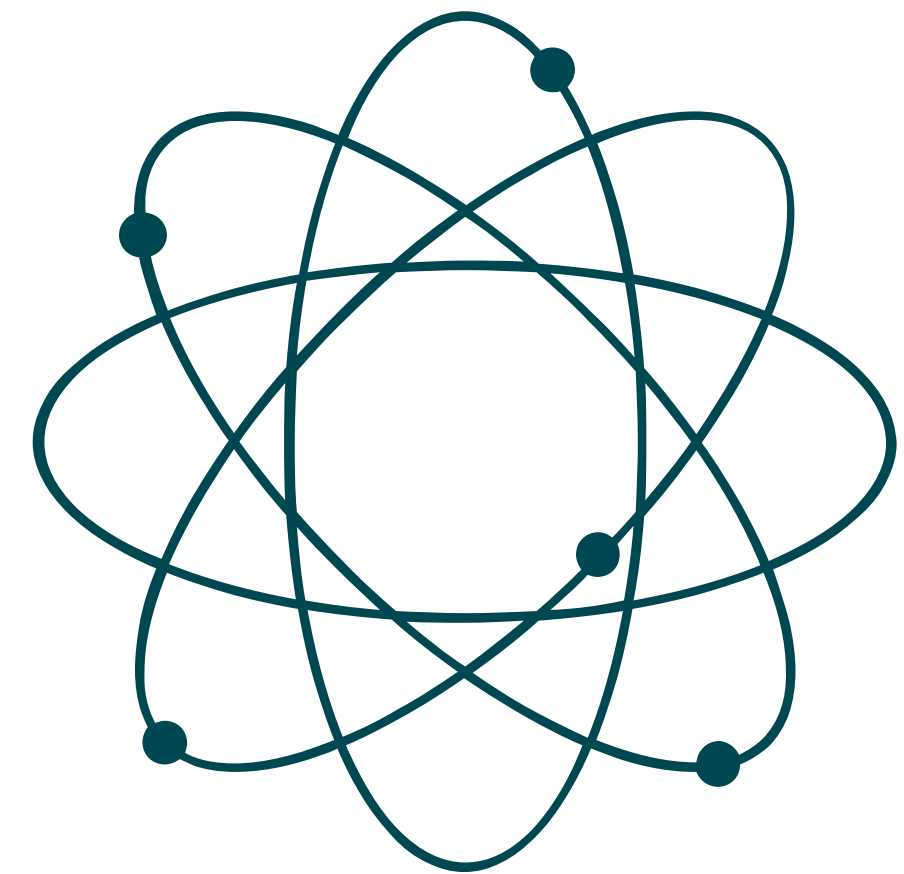
I CAN DO A VELCRO BOUNCE INFLATABLE.



**I CAN ALSO VISIT THE ZOO AND AQUARIUM AREA, PET DOGS,
AND PLAY ARCADE GAMES.**



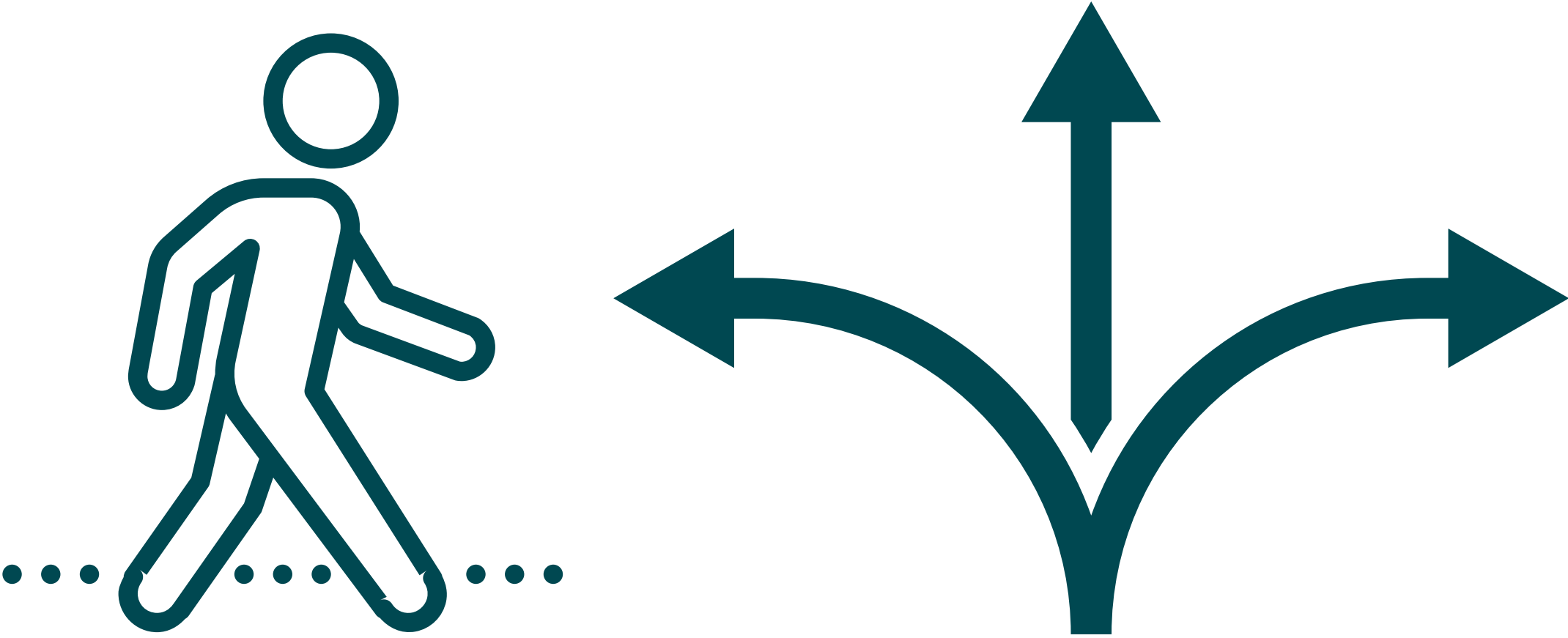
**IN THE EAGLES INTERVIEW ROOM, I CAN SEE A MAGIC SHOW
AT 12:00-12:45 PM OR 2:00-2:45 PM. I CAN SEE A SCIENCE
SHOW FROM 1:00-1:45 PM.**



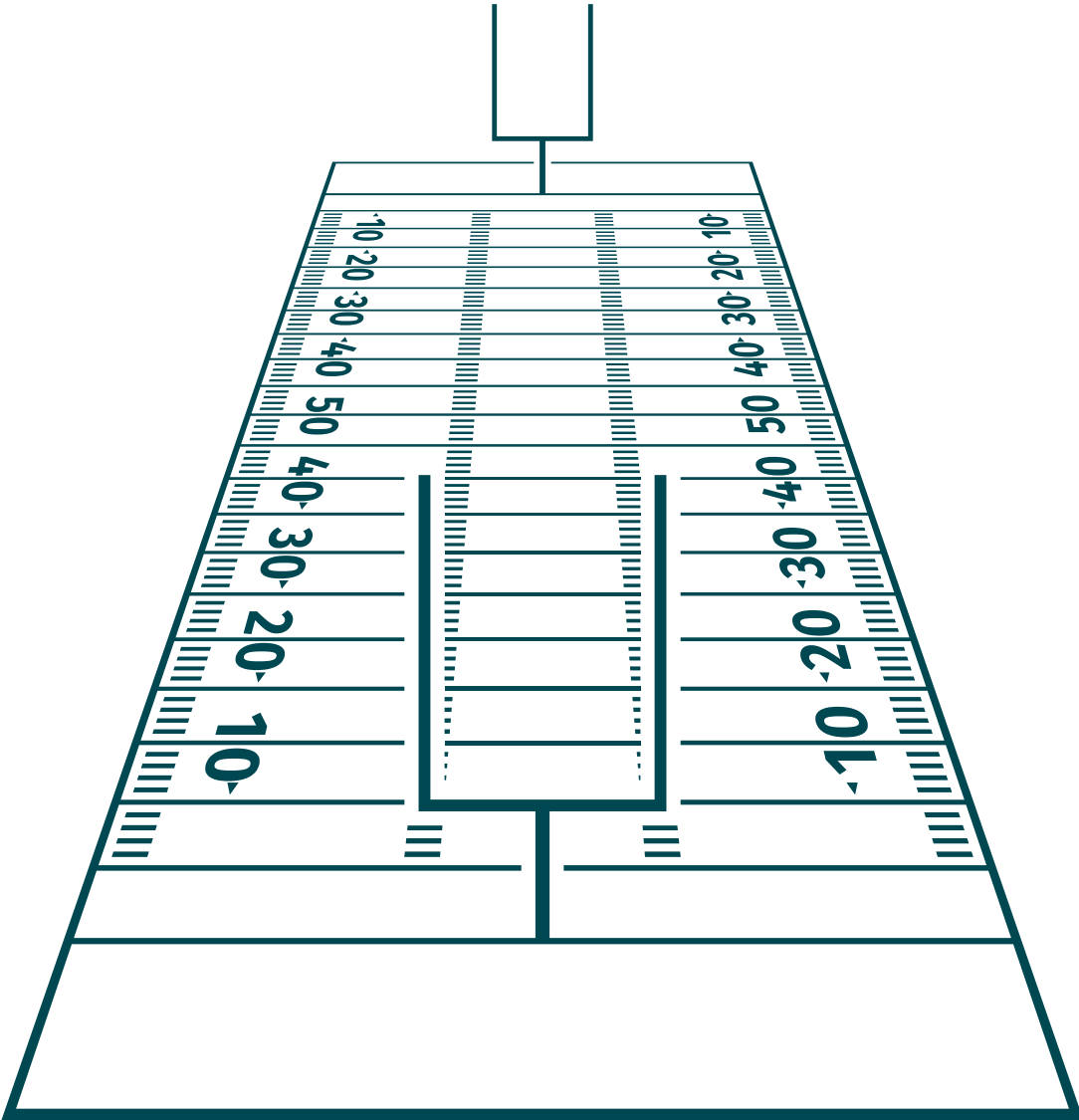
**I CAN VISIT A QUIET SPACE IN THE LINCOLN LOUNGE,
VISITORS LOCKER ROOM, OR FOOTBALL AUX ROOM.**



LASTLY, I CAN CHECK OUT THE ACTIVITIES ON THE FIELD.



LASTLY, I CAN CHECK OUT THE ACTIVITIES ON THE FIELD.



AFTER THE EVENT, I WILL BACK TO MY CAR AND GO HOME.



HAVE FUN AND GO EAGLES!

