

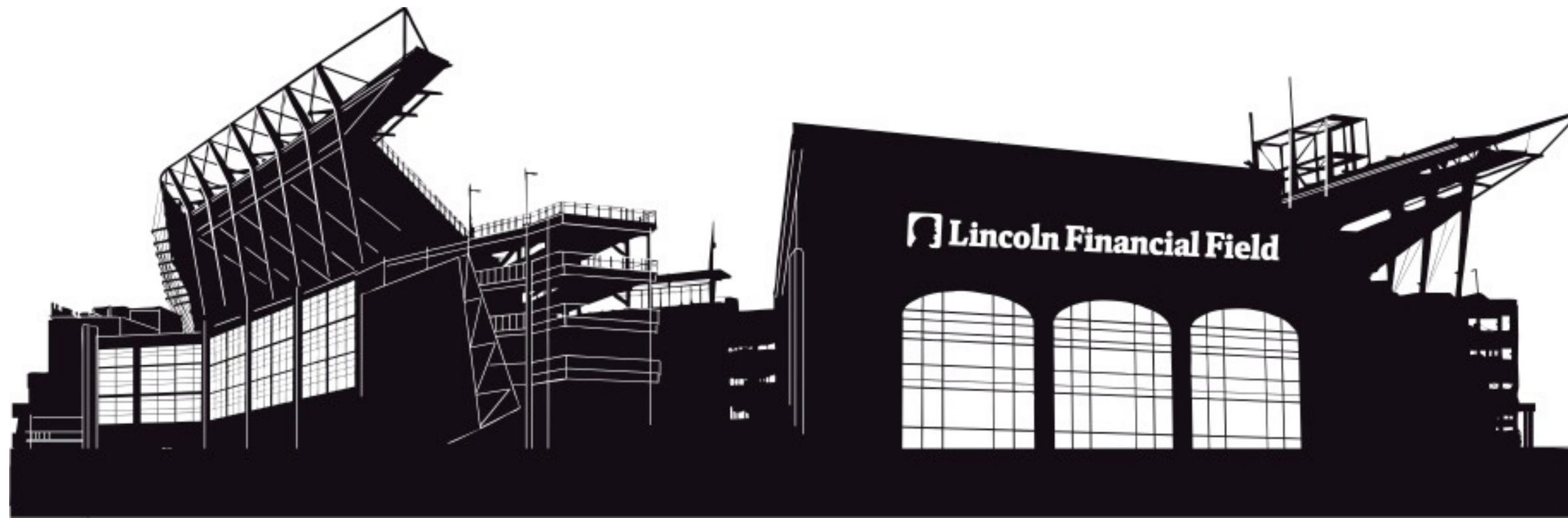


ALL ABILITIES

CHEER



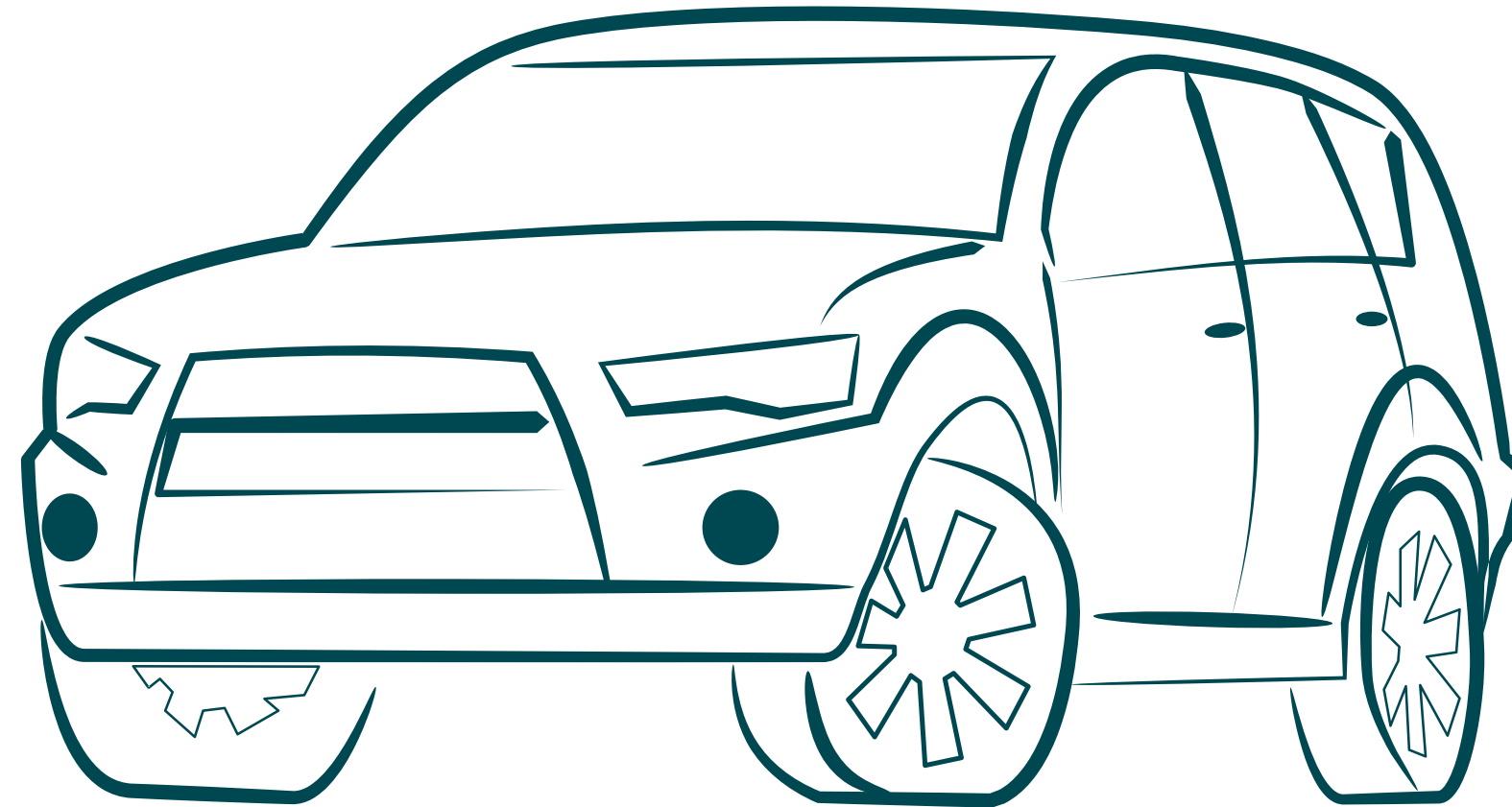
**TODAY, I AM GOING TO THE ALL ABILITIES CHEER CLINIC AT
LINCOLN FINANCIAL FIELD.**



**DO NOT FORGET TO WEAR MY EAGLES GEAR, I WILL ALSO
RECEIVE A CLINIC SHIRT!**



WHEN I ARRIVE TO THE STADIUM I WILL PARK THE CAR.



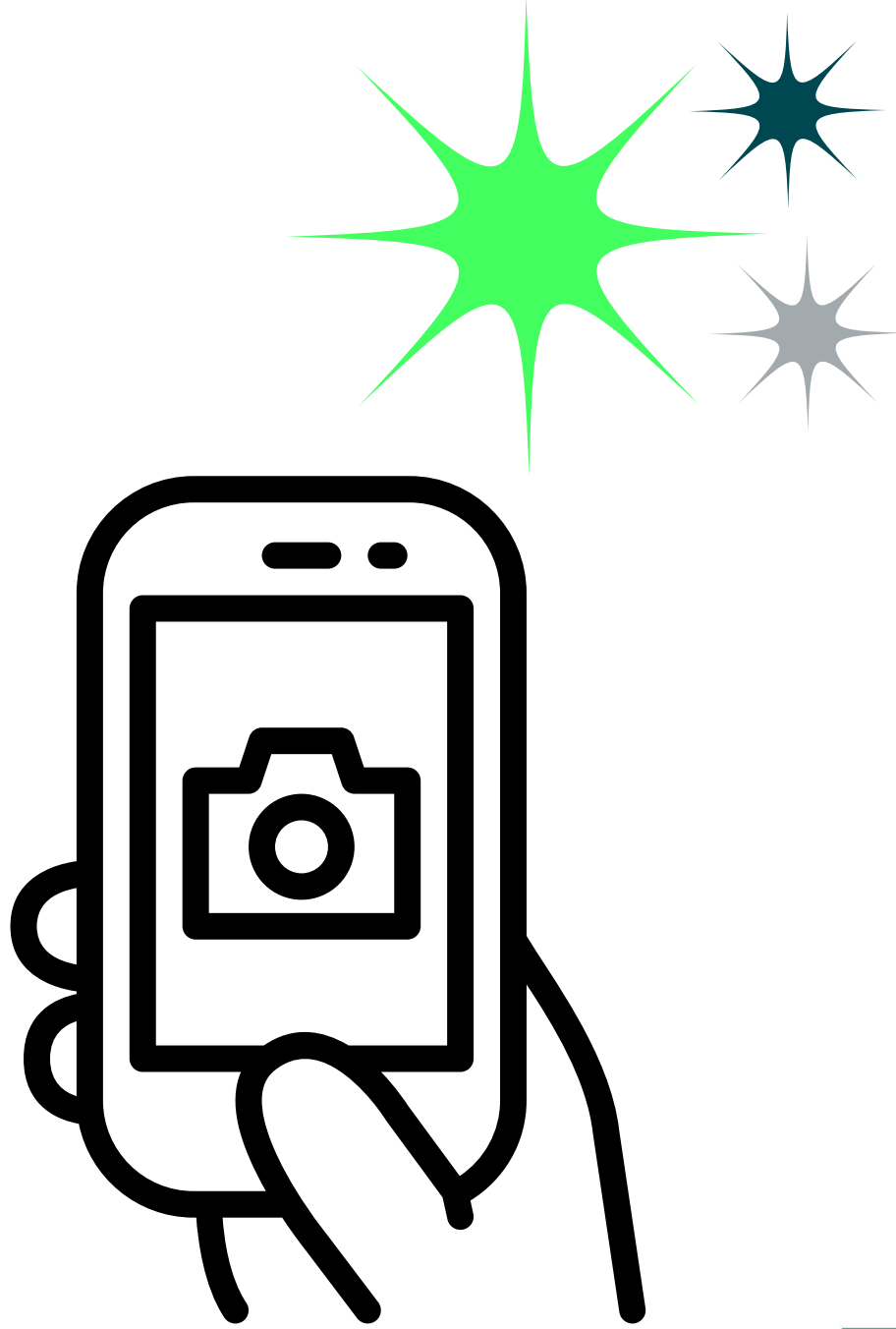
DOORS OPEN AND CHECK-IN BEGINS AT 9:30 AM.



WHEN I GET TO THE LINE, I WILL SHOW MY MOBILE TICKET.



I CAN SIGN IN AND TAKE PHOTOS WITH CHEERLEADERS IN THE CLUB LEVEL.



**AFTER CHECK IN, I WILL BE DIRECTED TO MY ASSIGNED
GROUP.**



I SHOULD LISTEN TO DIRECTIONS.



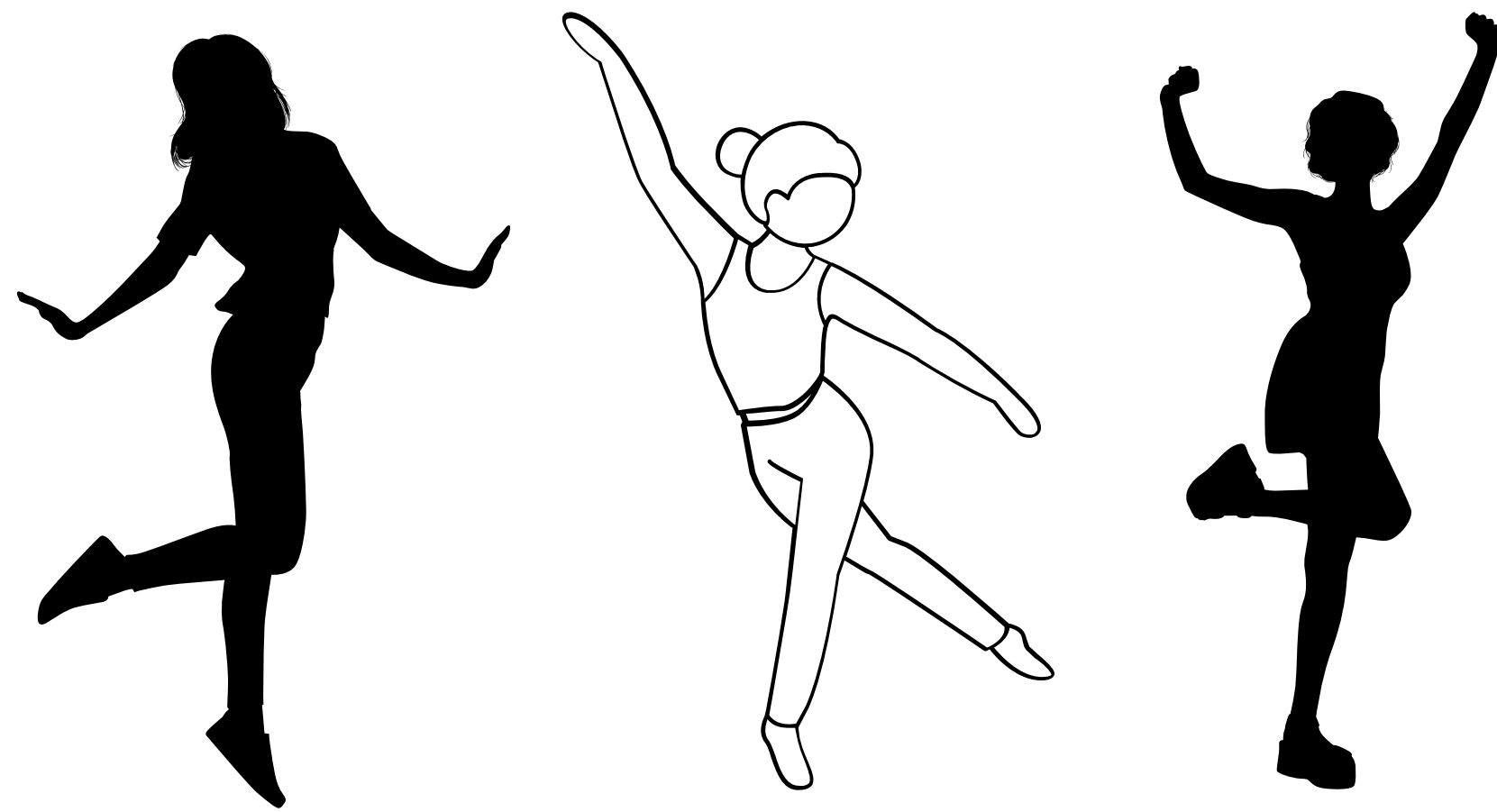
**IF I NEED A BREAK, I CAN ASK AN EAGLES AUTISM
FOUNDATION STAFF OR A VOLUNTEER.**



**I WILL DO A FEW ACTIVITIES TO GET TO KNOW EVERYONE
IN MY GROUP.**



I WILL THEN LEARN MY DANCE ROUTINE.



**I WILL DO MY FINAL PERFORMANCE FOR MY FRIENDS AND
FAMILY.**



CLINIC WILL END AT 11:30 AM.



IF I WANT TO TAKE A PICTURE ON THE FIELD AFTER THE CLINIC, I CAN HEAD DOWN THE TUNNEL IN THE LOBBY.



ENJOY AND GO EAGLES!

