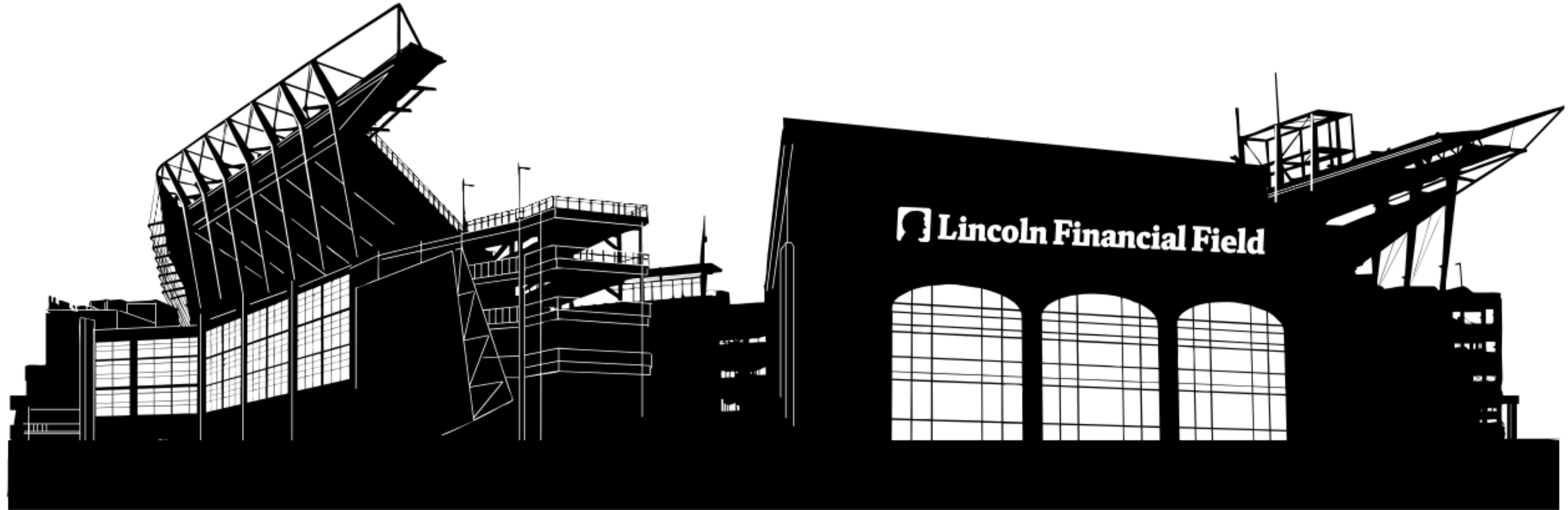


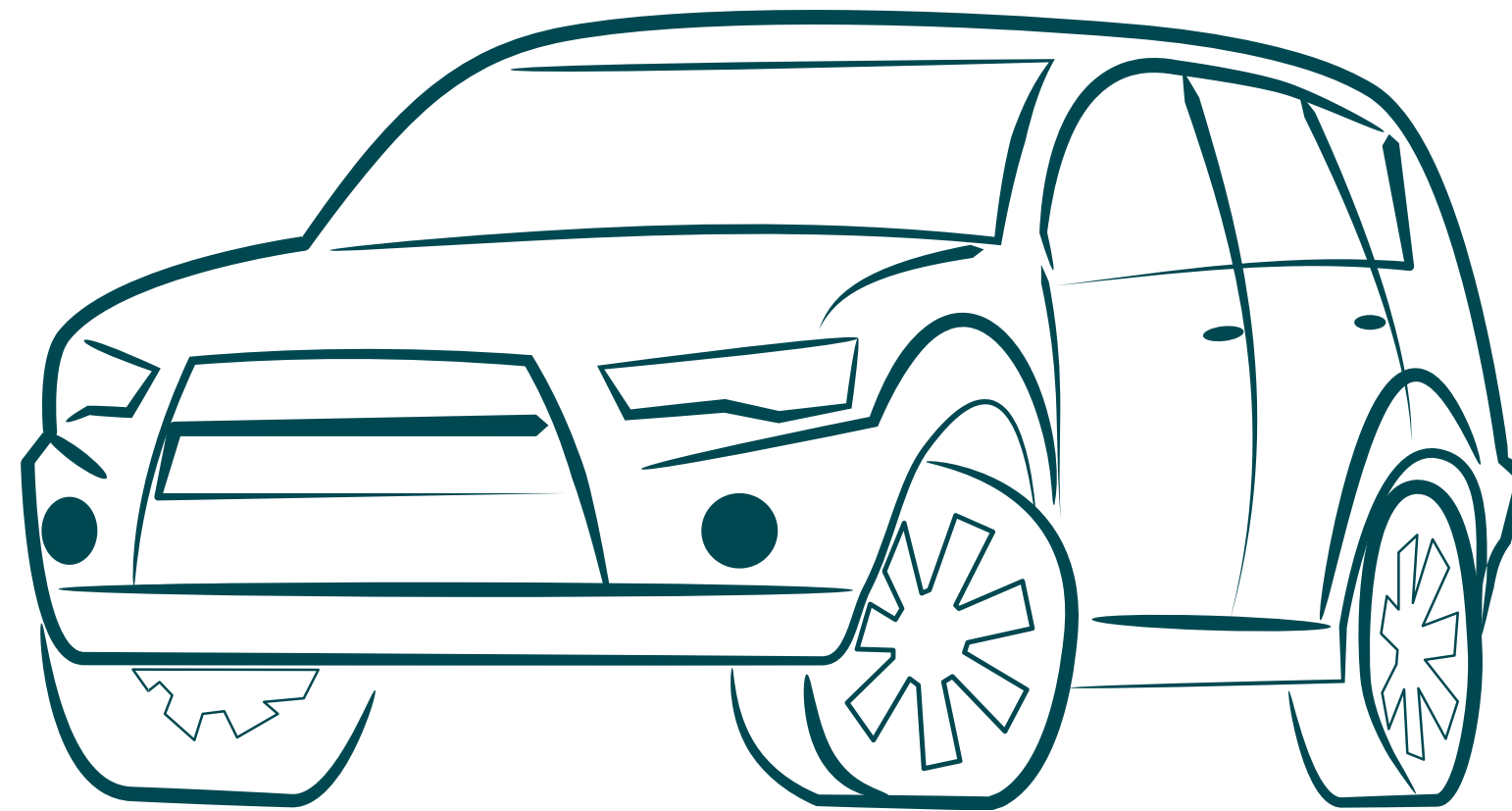


# GAMEDAY VISUAL SCHEDULE

**TODAY I AM GOING TO A GAME AT LINCOLN FINANCIAL  
FIELD.**



**WHEN I ARRIVE, PARK THE CAR IN THE PARKING LOT.**



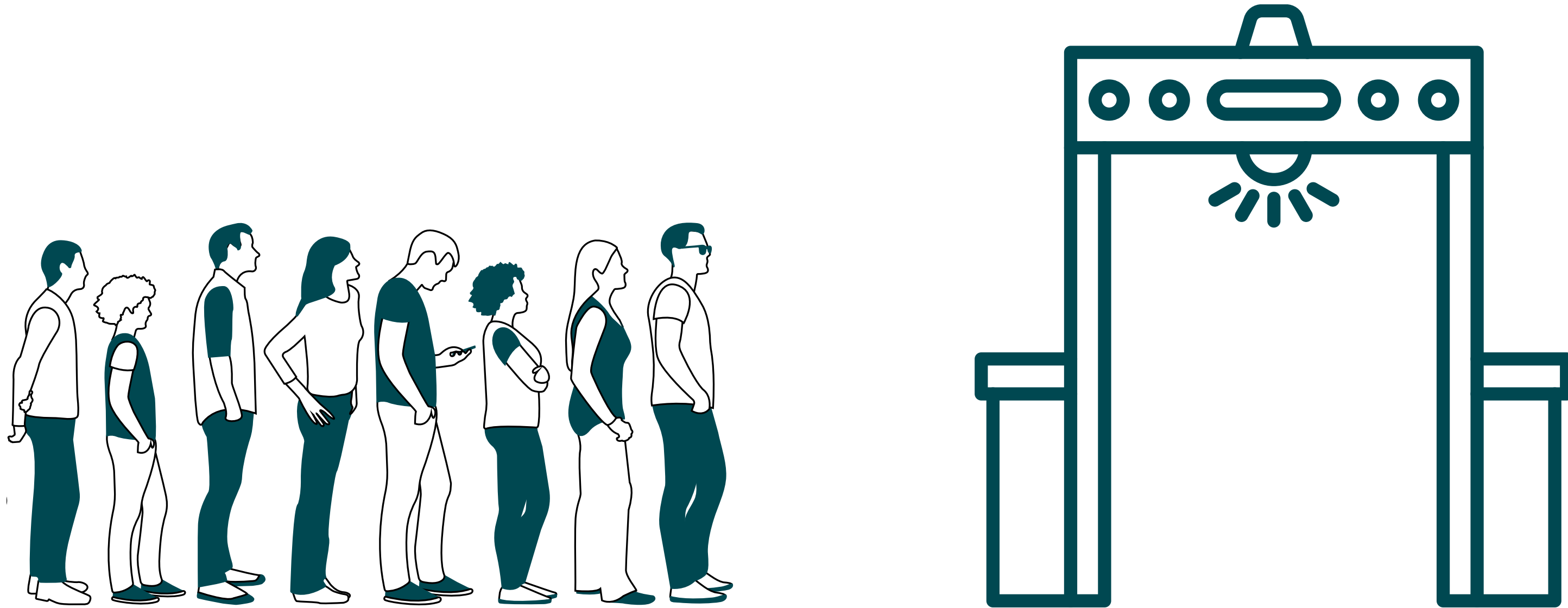
**I WILL WALK TO THE ENTRANCE AND WAIT IN LINE.**



**THE PEPSI PLAZA GATES OPEN AT 12:00 PM.**



**I WILL THEN WALK THROUGH SECURITY TO KEEP  
MYSELF AND OTHERS SAFE.**



**THE STADIUM ONLY ALLOWS CLEAR BAGS.**



**WHEN I GET TO THE FRONT OF THE LINE, I WILL SHOW MY  
MOBILE TICKET.**





**ONCE INSIDE THE STADIUM, I CAN LOOK FOR FUN  
ACTIVITIES ON THE PLAZA.**



# I CAN BUY "POPCORN FOR THE PEOPLE" INSIDE THE LOBBY AREA.



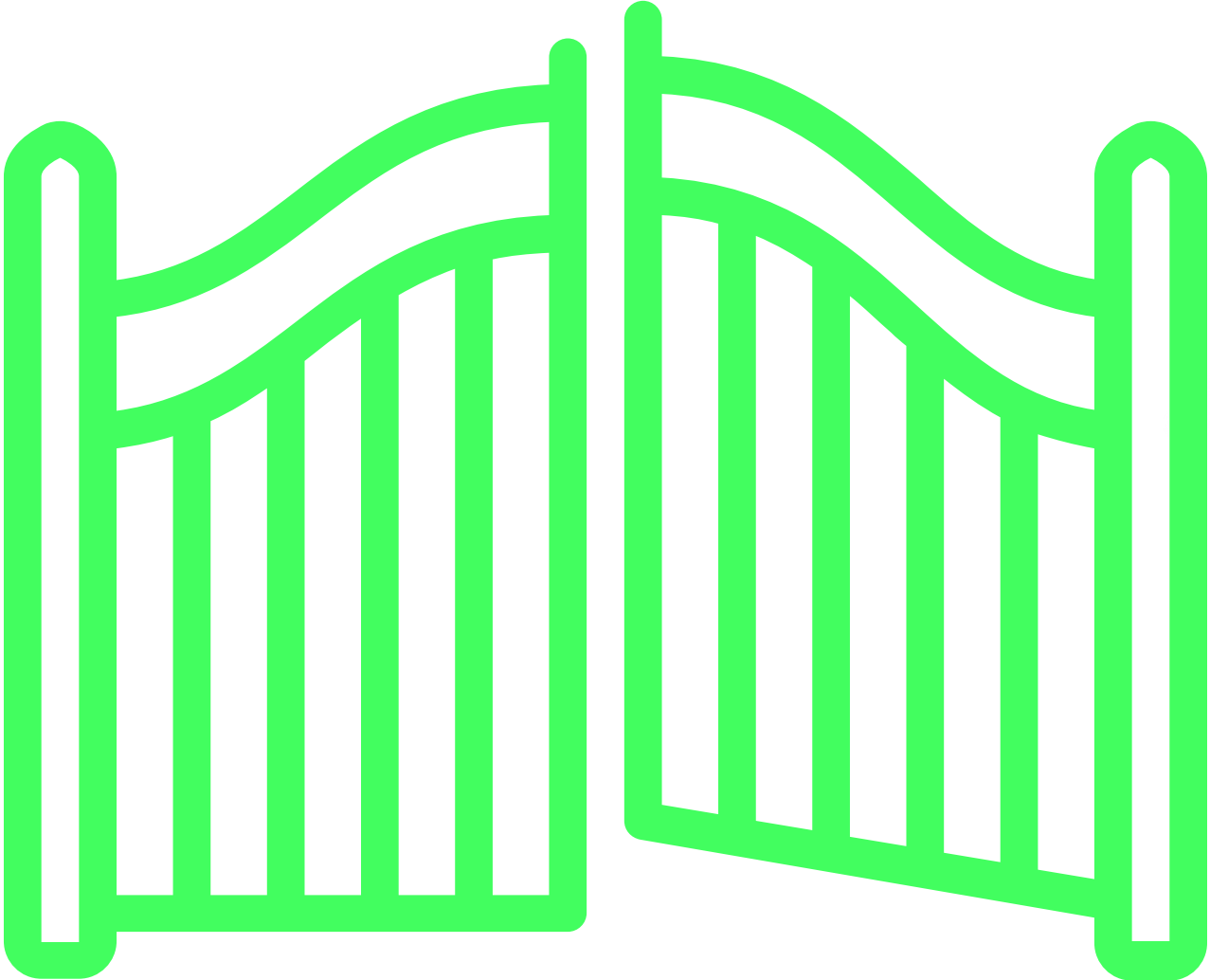
**IF I NEED A BREAK FROM THE ACTION ON THE PLAZA, I CAN VISIT THE SENSORY ACTIVATION VEHICLE LOCATED ON THE WEST SIDE OF THE PLAZA.**



**THE CLUB SUITE GATES OPEN AT 1:00 PM.**



**THE INNER STADIUM GATES OPEN AT 1:00 PM.**



**I WILL HEAR LOUD MUSIC, HORNS, AND  
WHISTLES AT THE GAME.**



**THERE WILL BE GATE FLARES AROUND 2:15 PM.**

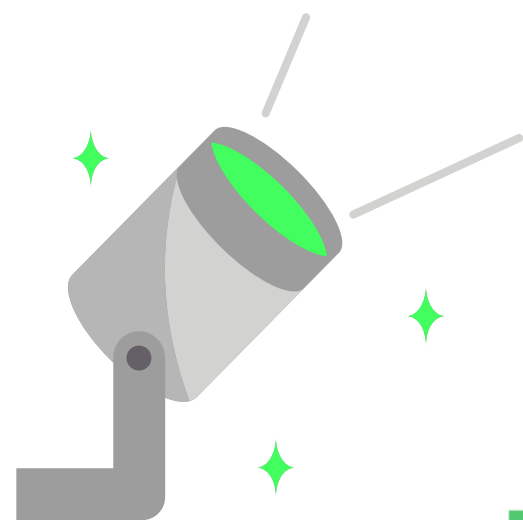
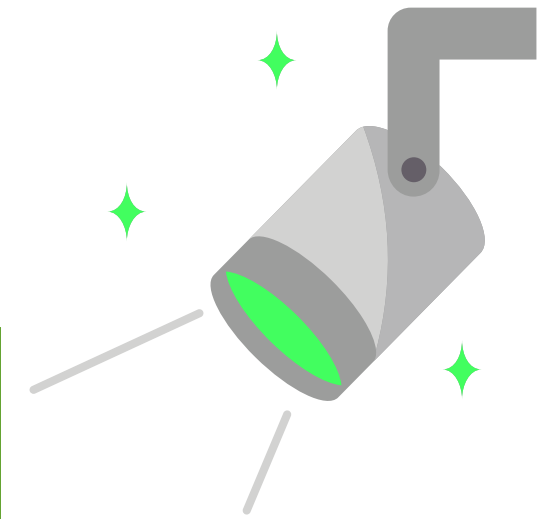
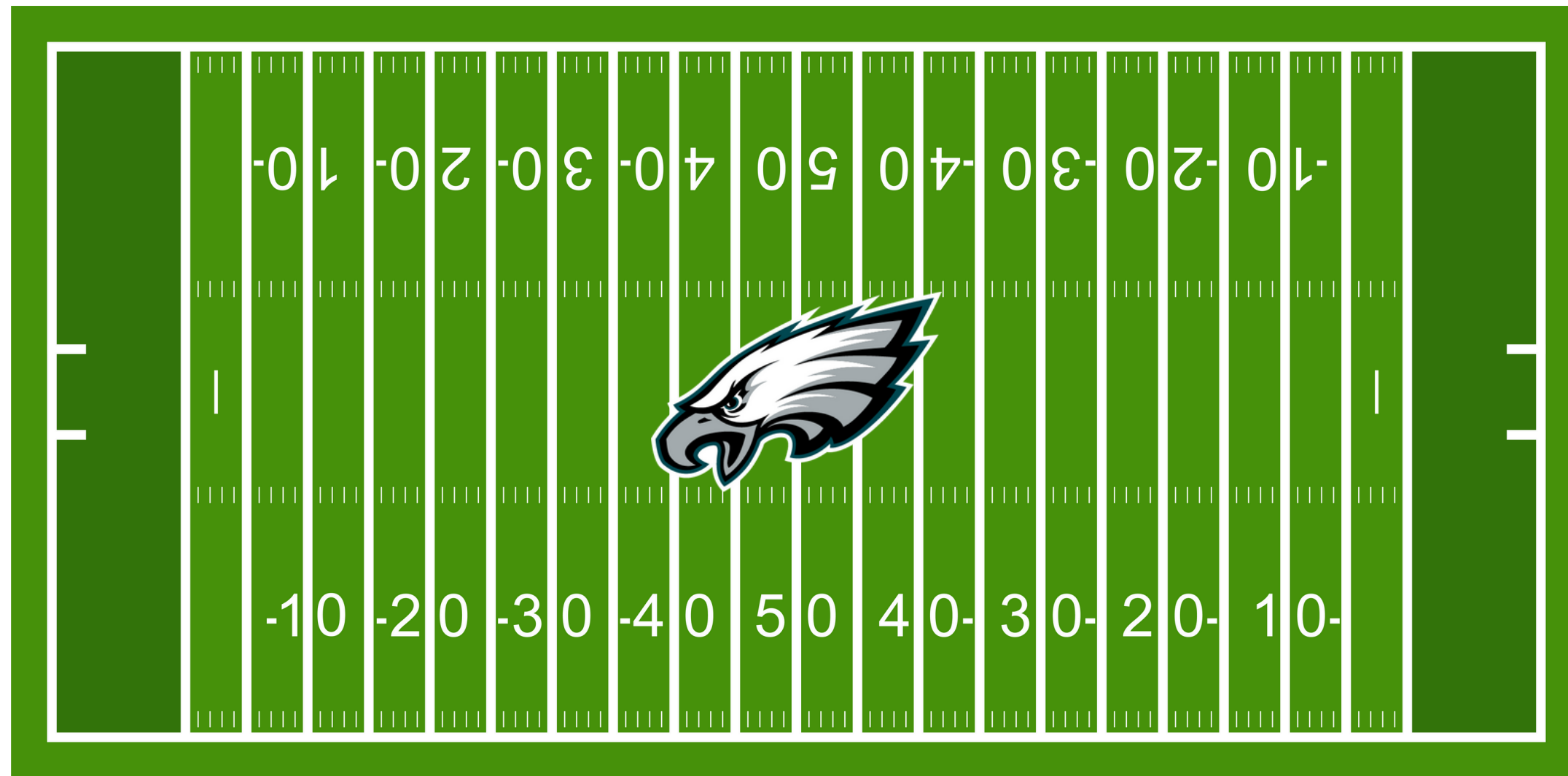


**THERE WILL BE FIREWORKS THROUGHOUT THE GAME.**

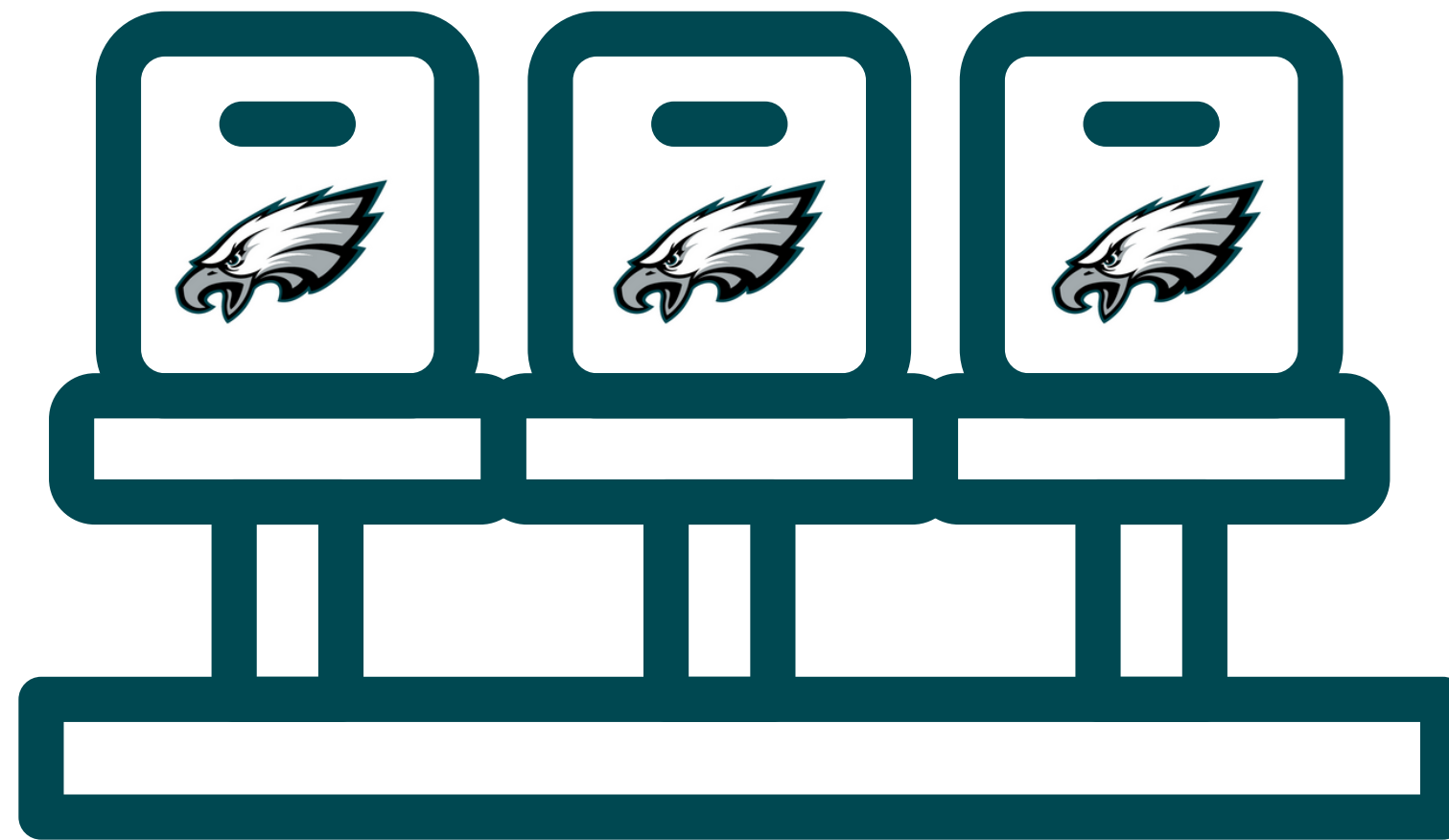




**THERE WILL ALSO BE FLASHING STADIUM LIGHTS THROUGHOUT THE GAME.**



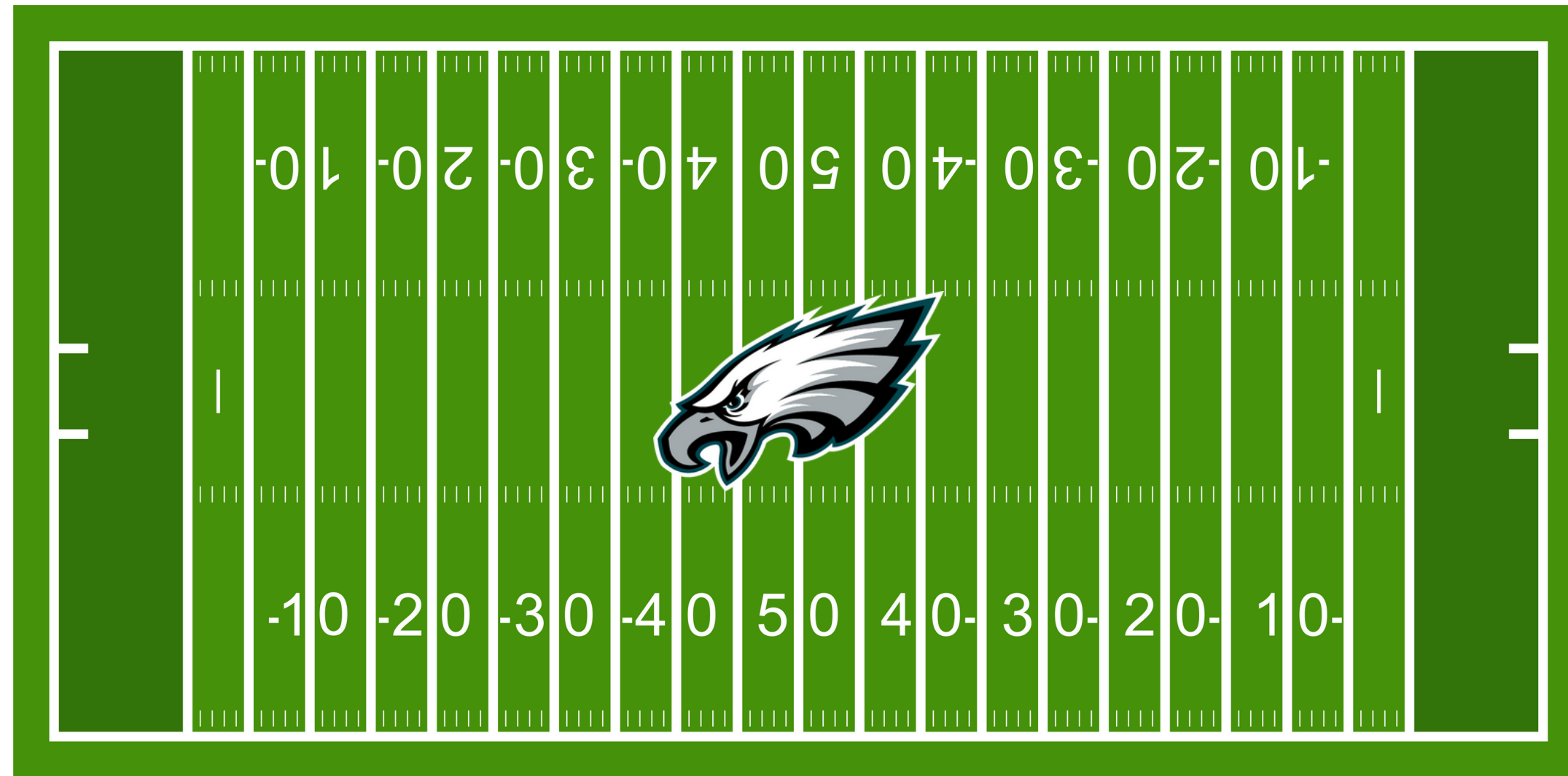
**I CAN START WALKING TO MY SEATS IN MY SECTION TO  
WATCH THE GAME.**



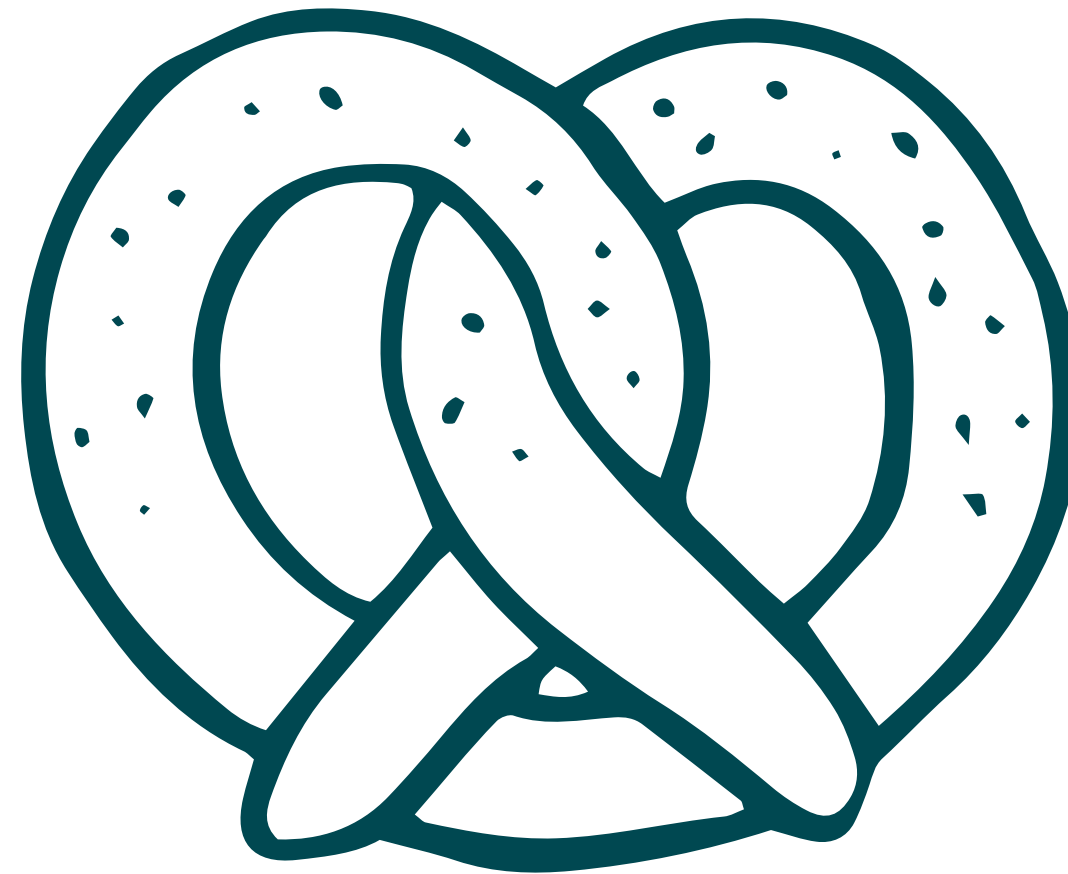
**THE NATIONAL ANTHEM WILL HAPPEN AROUND 2:55 PM.**



**THE GAME BEGINS AROUND 3:00 PM.**



**IF I AM HUNGRY OR THIRSTY, I CAN BUY FOOD OR DRINK  
ON THE MAIN CONCOURSE.**



**IF I NEED A BREAK OR A SENSORY ITEM, I CAN GO TO GUEST SERVICES BOOTHS LOCATED AT 121, 136, 206, 226.**



**IF I NEED A LONGER BREAK I CAN GO TO THE SENSORY ROOM ON THE WEST LOWER SUITE LEVEL ACCESSED THROUGH ELEVATORS NEAR SECTION 105/205 OR THE SENSORY VEHICLE STATIONED ON PEPSI PLAZA .**



**IF I HAVE ANY QUESTIONS, I CAN ASK A STAFF MEMBER.**





**HAVE FUN AND GO EAGLES!**

