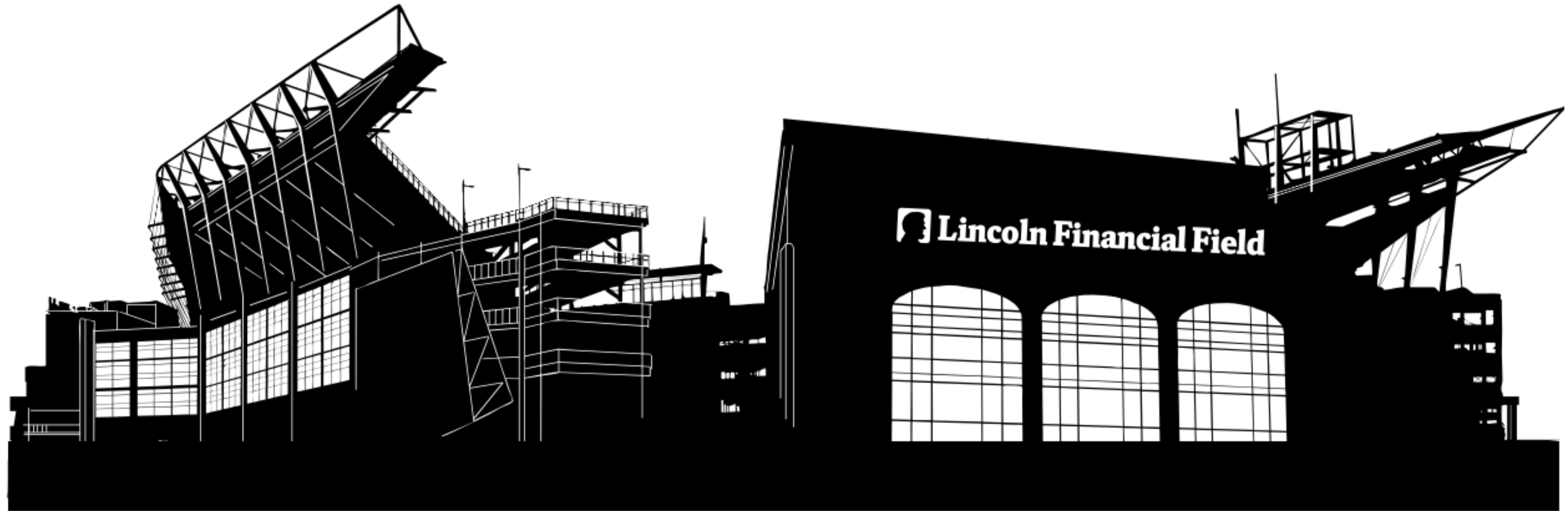


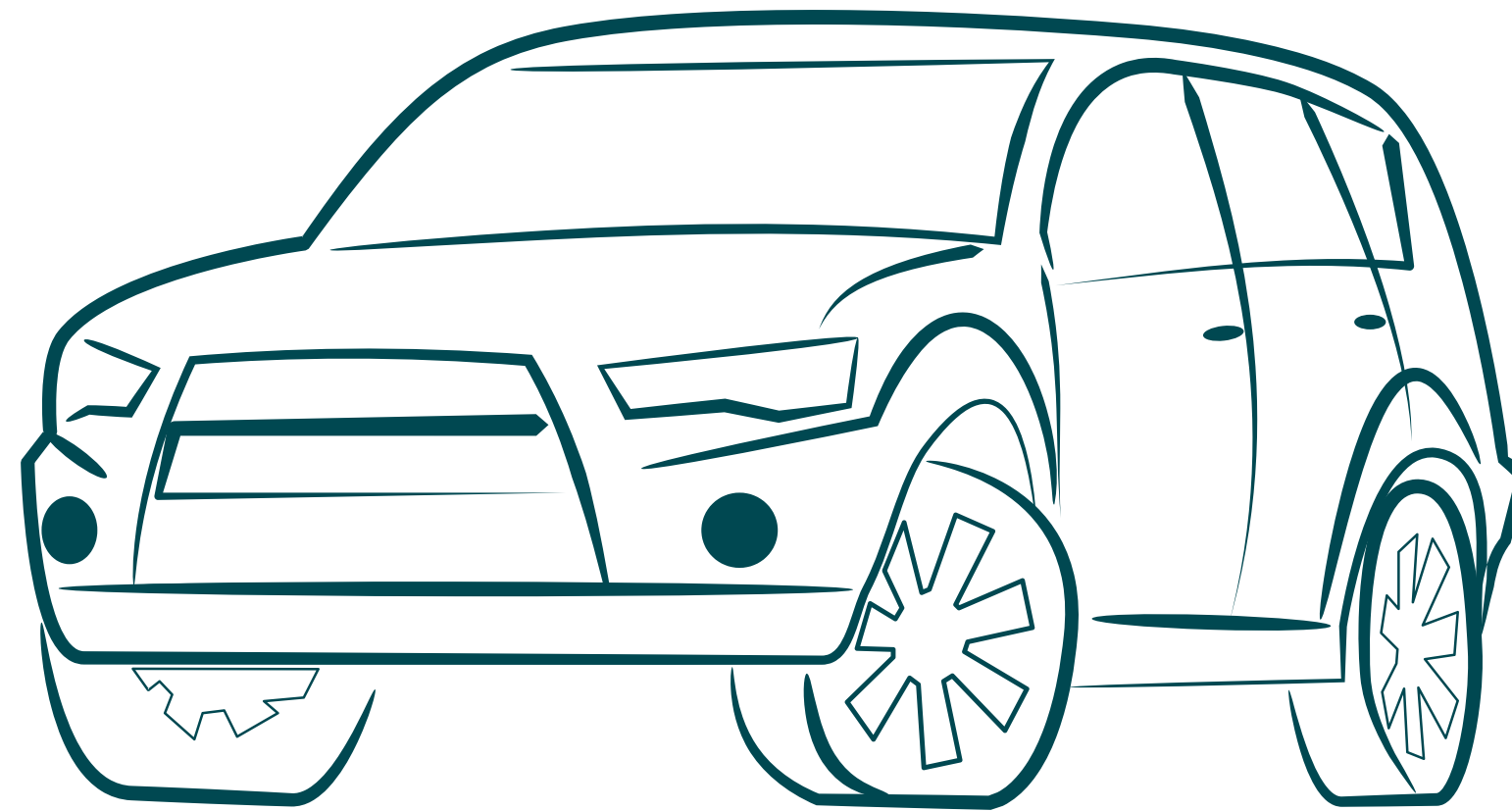


# GAMEDAY VISUAL SCHEDULE

**TODAY I AM GOING TO A GAME AT LINCOLN FINANCIAL  
FIELD.**



**WHEN I ARRIVE, PARK THE CAR IN THE PARKING LOT.**



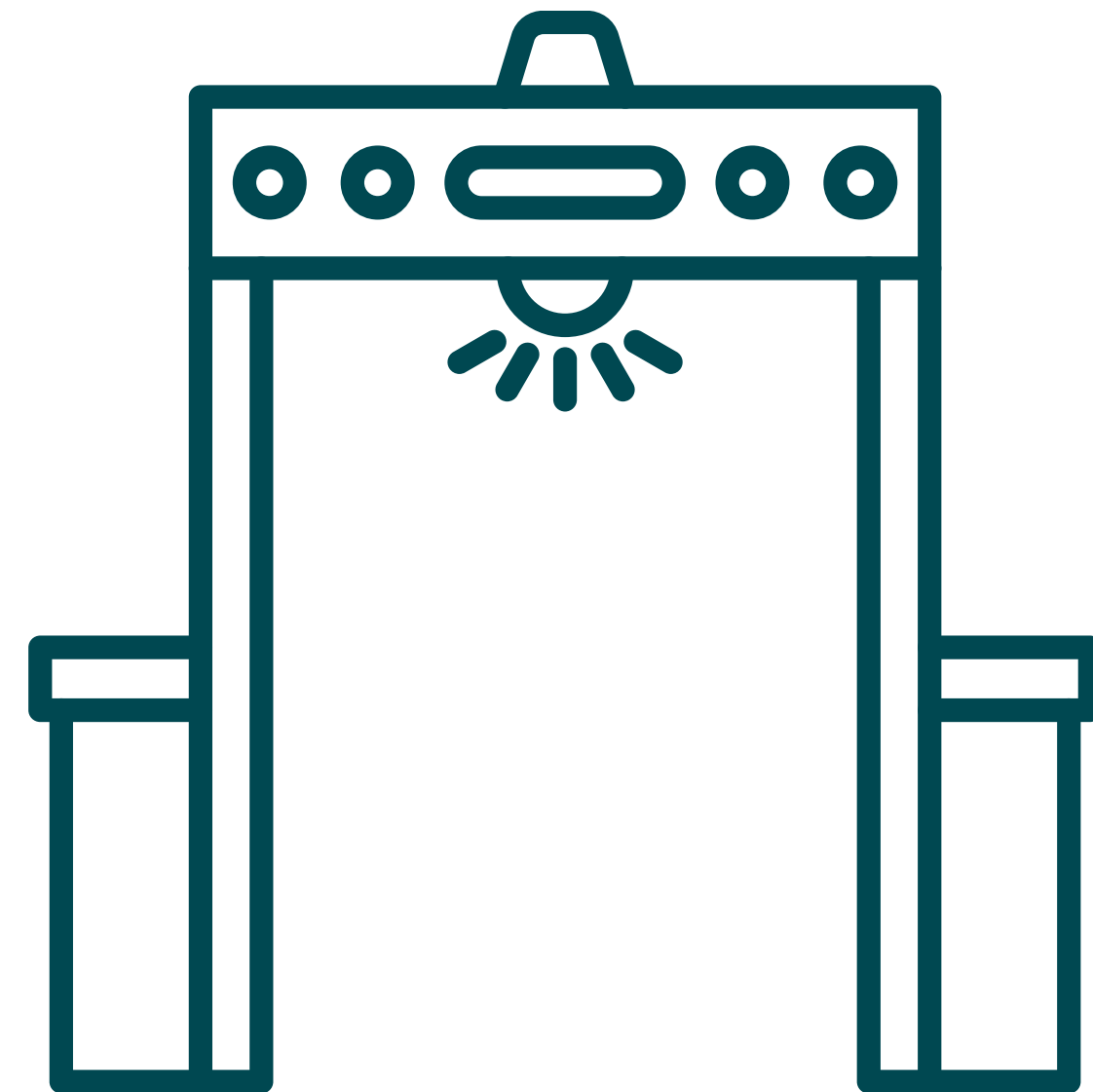
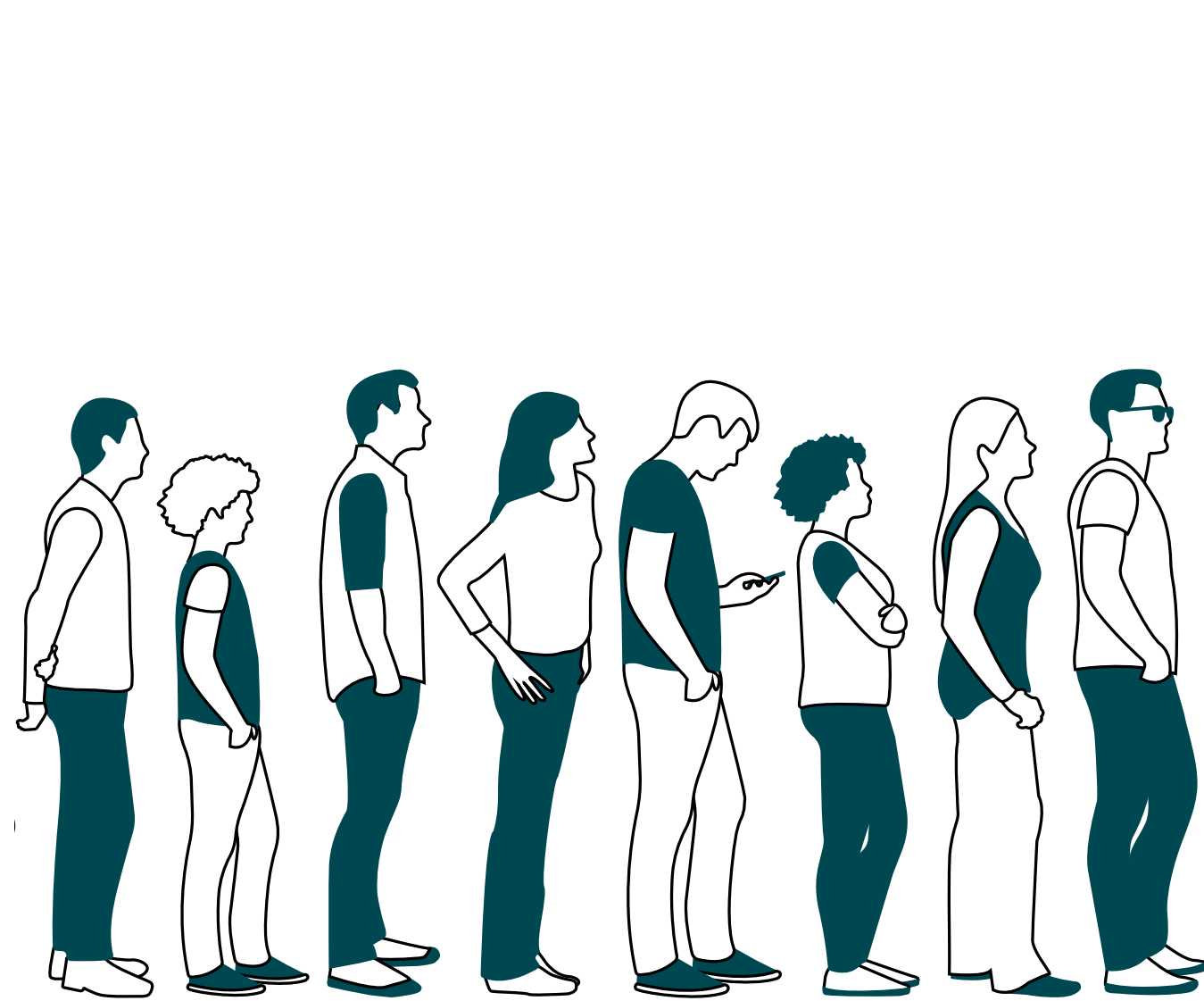
**I WILL WALK TO THE ENTRANCE AND WAIT IN LINE.**



**THE PEPSI PLAZA GATES OPEN AT 5:00 PM.**



**I WILL THEN WALK THROUGH SECURITY TO KEEP  
MYSELF AND OTHERS SAFE.**



**THE STADIUM ONLY ALLOWS CLEAR BAGS.**



**WHEN I GET TO THE FRONT OF THE LINE, I WILL SHOW MY  
MOBILE TICKET.**





**ONCE INSIDE THE STADIUM, I CAN LOOK FOR FUN  
ACTIVITIES ON THE PLAZA.**



I CAN BUY "POPCORN FOR THE PEOPLE" INSIDE THE LOBBY  
AREA.



**THE CLUB SUITE GATES OPEN AT 6:00 PM.**



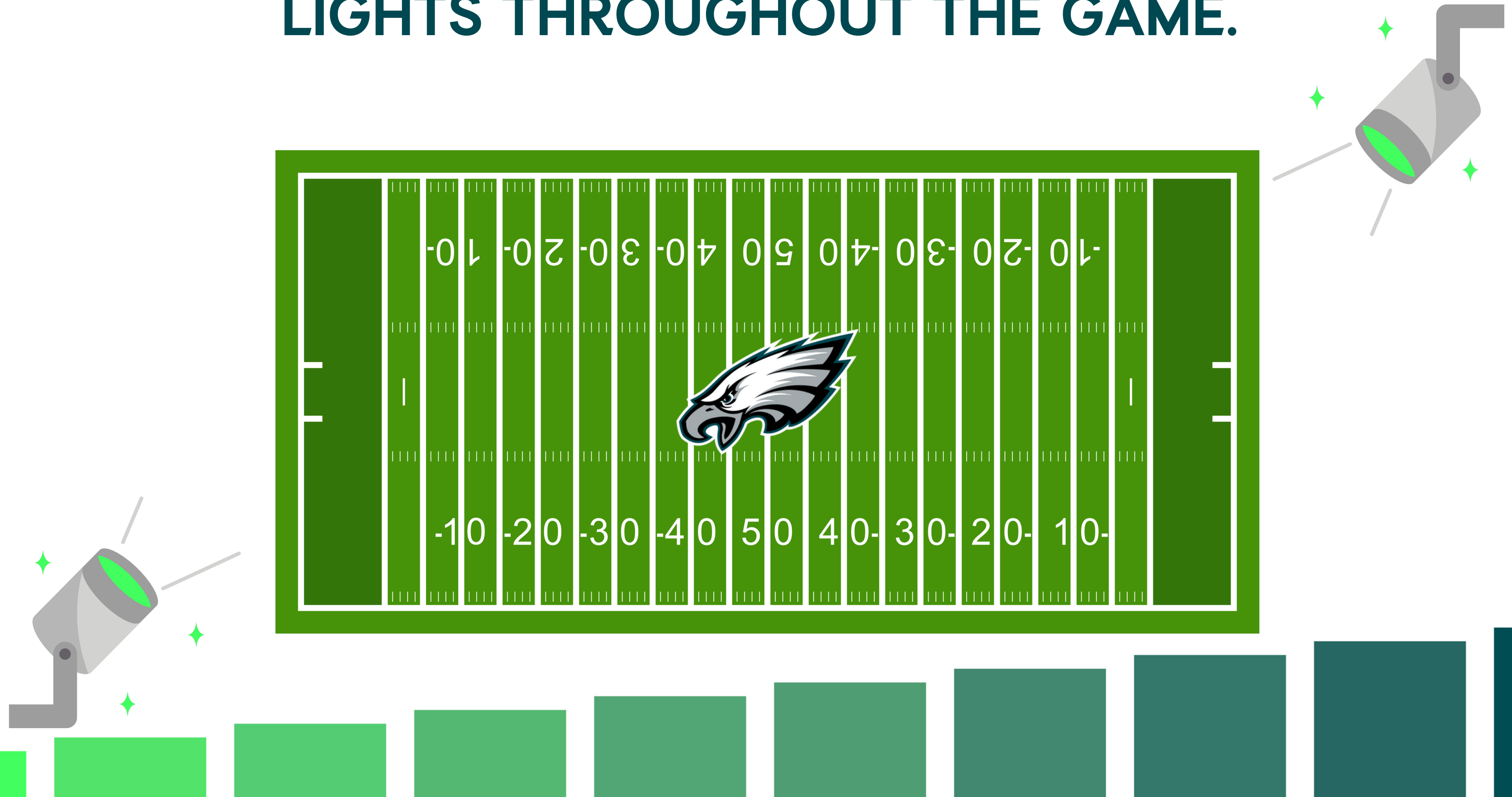
**THE INNER STADIUM GATES OPEN AT 6:00 PM.**



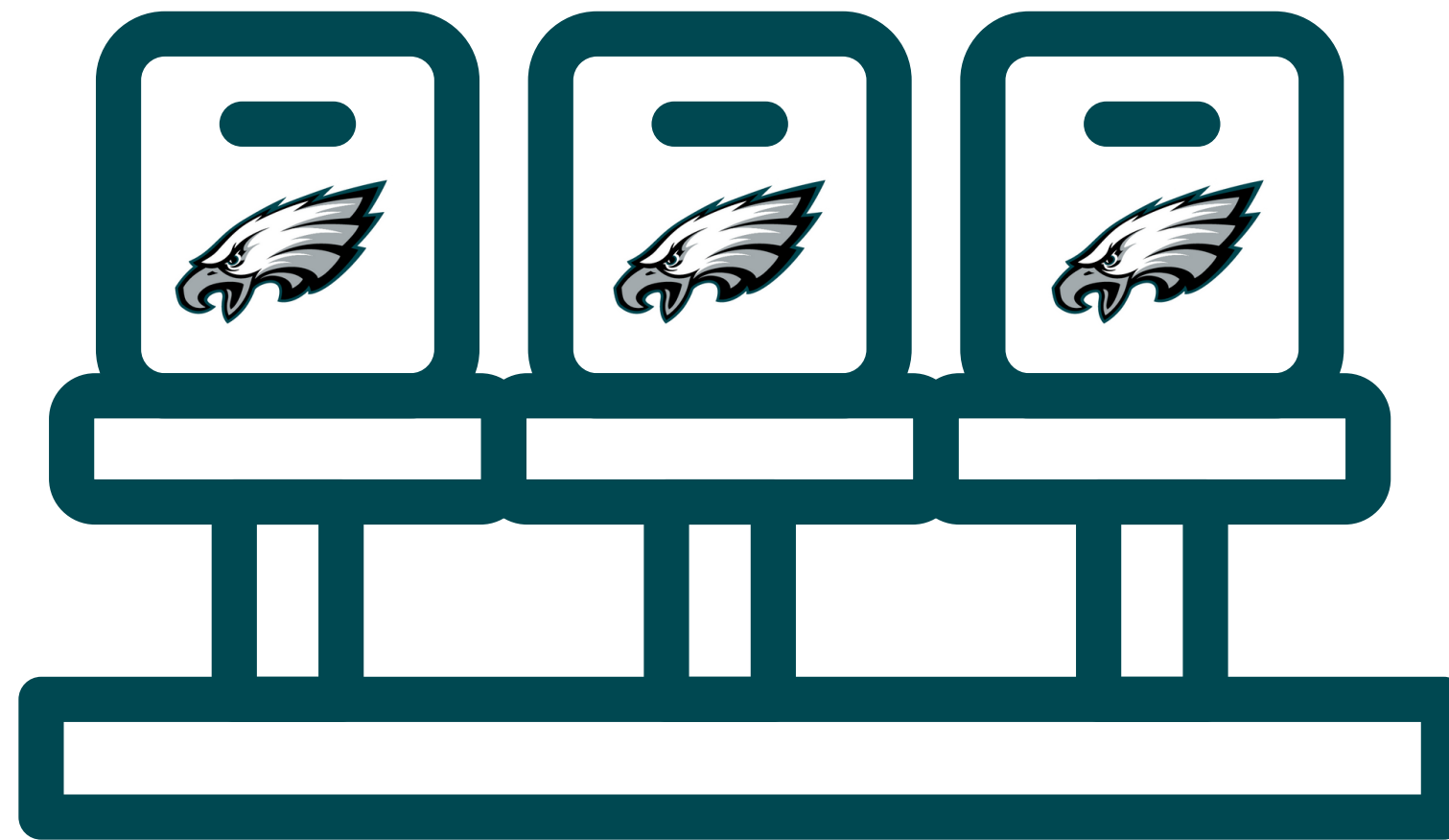
I WILL HEAR LOUD MUSIC, HORNS, AND  
WHISTLES AT THE GAME.



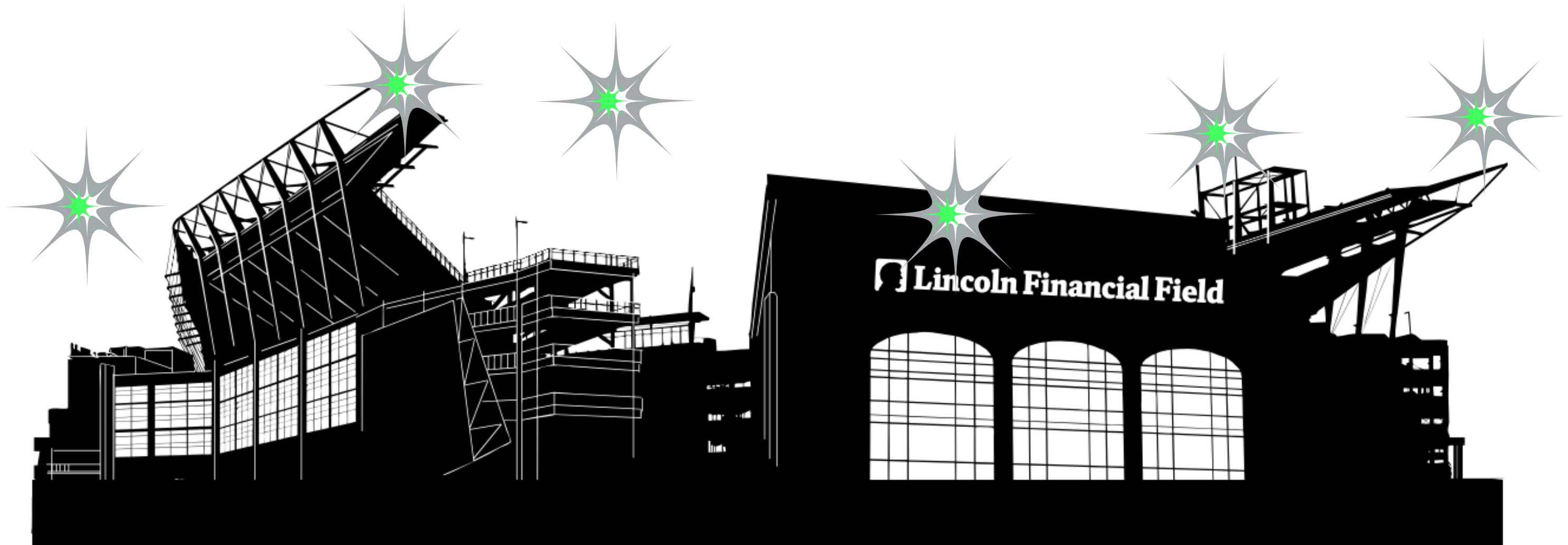
**THERE WILL ALSO BE FLASHING STADIUM  
LIGHTS THROUGHOUT THE GAME.**



**I CAN START WALKING TO MY SEATS IN MY SECTION TO  
WATCH THE GAME.**

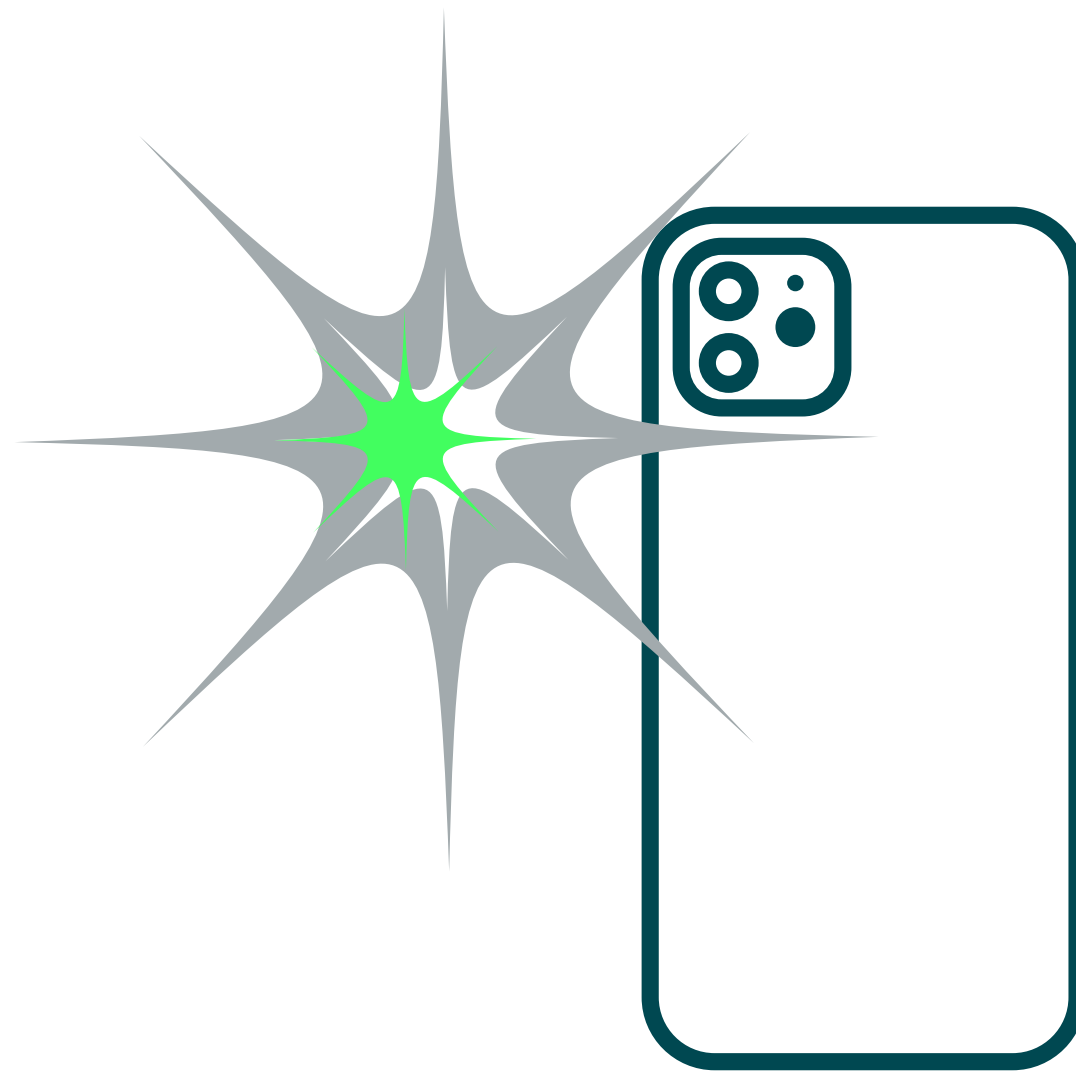


**THERE WILL BE A CELL PHONE LIGHT SHOW AROUND  
8:00 PM FROM GUEST'S CELL PHONES ALL  
THROUGHOUT THE STADIUM.**





**WHEN I OPEN THE EAGLES APP ON MY PHONE AS THE  
TEAM IS WALKING OUT OF THE TUNNEL, IT WILL START  
FLASHING.**



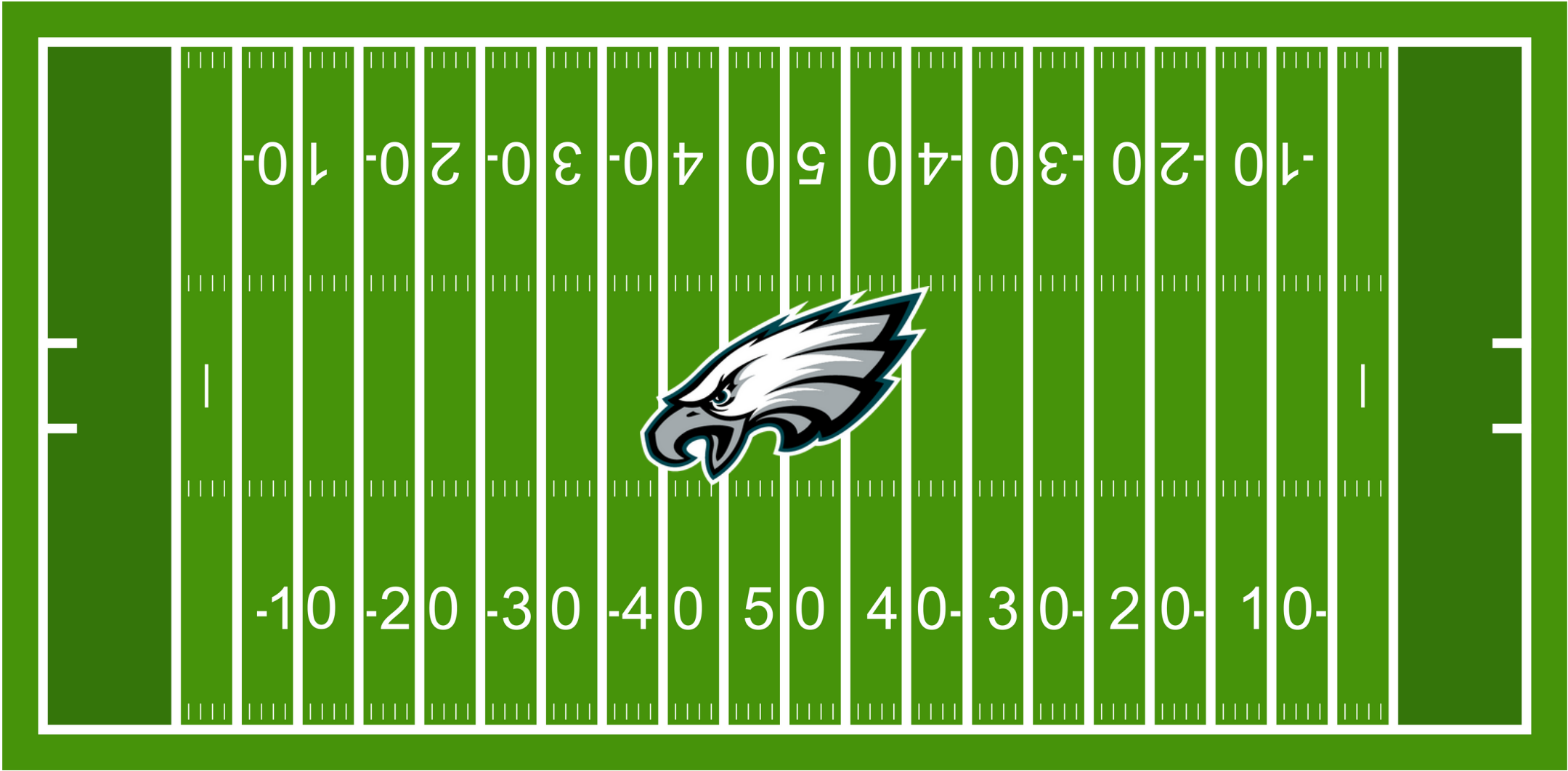
**IF I DO NOT LIKE FLASHING LIGHTS, I CAN GO TO THE  
SENSORY ROOM ON THE WEST LOWER SUIT LEVEL  
ACCESSED THROUGH ELEVATORS AT 105 OR 205.**



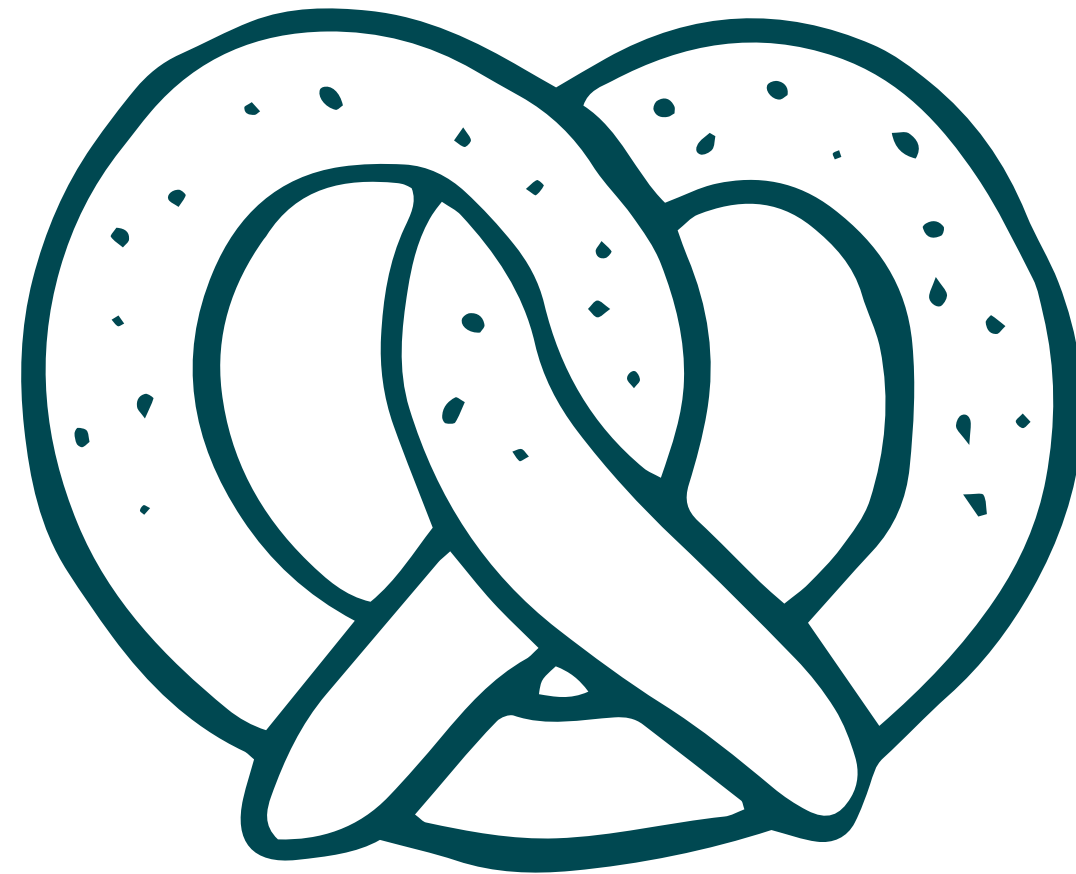
**FIREWORKS AND THE NATIONAL ANTHEM WILL HAPPEN  
AROUND 8:10 PM.**



THE GAME BEGINS AT 8:15 PM.



**IF I AM HUNGRY OR THIRSTY, I CAN BUY FOOD OR DRINK  
ON THE MAIN CONCOURSE.**



**IF I NEED A BREAK OR A SENSORY ITEM, I CAN GO TO GUEST SERVICES BOOTHS LOCATED AT 121, 136, 206, 226.**



**IF I NEED A LONGER BREAK I CAN GO TO THE SENSORY  
ROOM ON THE WEST LOWER SUITE LEVEL ACCESSED  
THROUGH ELEVATORS NEAR SECTION 105/205.**



**IF I HAVE ANY QUESTIONS, I CAN ASK A STAFF MEMBER.**





**HAVE FUN AND GO EAGLES!**

