



**MISCELLANEOUS**



## ABOUT STATE FARM STADIUM

State Farm Stadium is a prime example of sophisticated engineering, technology, and design. The venue features both a retractable roof and retractable natural grass playing field, setting an industry standard for design excellence and providing the ultimate in fan comfort. The field allows flexibility to transform State Farm Stadium from a football-ready field to an unrestricted stadium floor in just over an hour at the push of a button.



Because of the truly unique multi-purpose nature of the facility, State Farm Stadium is able to host some of the country's most high-profile events - including, most recently, the 2024 NCAA Men's Final Four. It marked the second time (2017) State Farm Stadium hosted the tournament, and it is the only venue west of Texas to host the event since 1995.

Since opening in August of 2006, the building has also hosted three Super Bowls, the 2015 Pro Bowl, the first-ever BCS National Championship game (Florida-Ohio State), Fiesta Bowls, international soccer matches, high school football championships, high school proms, monster truck and motocross events, trade shows and conventions and countless other events. In 2023 alone, State Farm Stadium hosted the kickoff of Taylor Swift's Eras Tour and Beyonce's Renaissance World Tour as the artists joined the list of notable musical acts such as The Rolling Stones, U2, Garth Brooks, Guns N' Roses and Metallica who have played the venue.

Hosting some of the world's most high-profile sports and entertainment events has resulted in over \$5 billion in economic impact for the state of Arizona.

On February 12, 2023 State Farm Stadium hosted its third Super Bowl when a record 115.1 million viewers watched the Kansas City Chiefs defeat

the Philadelphia Eagles 38-35 in Super Bowl LVII. The venue also played host to Arizona's largest international soccer match in history as Haiti and Mexico took the pitch for the 2019 Concacaf Gold Cup Semifinal.

State Farm Stadium also served as a critical site during the COVID-19 pandemic. The venue hosted three blood drives at the beginning of the outbreak and in 2021 it became one of the first, and most successful, mass vaccination sites in the nation.

**UPGRADING THE NEST:** Already considered one of the finest venues in sports, fans at State Farm Stadium will be introduced to first-of-their-kind field-level seating experiences beginning in the 2024 season. New this season, the Cardinals introduced bold plans to re-shape the in-stadium experience in ways that will re-define the standards and expectations for high-end, premium spectator offerings not only in Arizona but across the sports landscape.

These innovative, new premium products are characterized by two primary features. First, they offer some of the most unique, exclusive, comfortable, and convenient luxury experiences available in sports. And secondly, their proximity to the field - literally just feet away from the sidelines - means only the players in the game will be closer to the action.





These innovative, new premium products are characterized by two primary features. First, they offer some of the most unique, exclusive, comfortable, and convenient luxury experiences available in sports. And secondly, their proximity to the field - literally just feet away from the sidelines - means only the players in the game will be closer to the action.

#### **South End of Stadium**

**Casitas:** Perhaps the most unique of the new offerings, the custom-built, field-level luxury casitas are designed specifically for State Farm Stadium and introduce a concept never before seen in the industry. The NFL equivalent of beachfront property, they sit just feet from the south end zone.

**Casita Garden Club:** The spacious 13,400-square foot club has the feel of an outdoor garden patio situated inside an NFL stadium. Located at the south end of field level directly behind the Casitas, this area spans the width of the south end zone. Its location on the field level just feet away from the home locker room offers an incredible, behind-the-scenes perspective as Cardinals players make their way to the playing field.

**Field Boxes:** Located on the east and west sidelines at the south end of the playing field, these private four and six-person field boxes offer the ultimate in terms of comfort and proximity to the action.

#### **North End of Stadium**

**Morgan Athletic Club hosted by The Global Ambassador:** In partnership with The Global Ambassador - Arizona's prestigious luxury hotel created by prolific hospitality and restaurant innovator Sam Fox - this ground-breaking collaboration will offer an unparalleled luxury experience at State Farm Stadium starting this season.

Part of the new luxury offerings available at State Farm Stadium in 2024, "Morgan Athletic Club" - which borrows from the Cardinals' original name when they were founded in 1898 - is a high-end club located at the north end of field level and

just steps away from the playing field. Spanning nearly 12,500 square feet, its vibe is a throwback to that of a private, 1920s supper club with low lighting and a lavishly furnished moody lounge. Since its debut in December 2023, The Global Ambassador has quickly established itself as Arizona's boldest new luxury hotel. The Global Ambassador is internationally inspired and seamlessly blends exceptional hospitality, culinary artistry, and wellness experiences within one precisely curated destination.

**Field Suites:** Located near the 20-yard line and just steps from the playing field, Fans who choose this option can enjoy everything gameday has to offer with room for 12 guests as well as all-inclusive food and beverage.

**Sideline and End Zone Seats:** After enjoying all the perks and amenities of the Morgan Athletic Club, guests make a short walk to their amazingly comfortable seats either on the sideline or looking head-on at the action from the north end zone.

**Tunnel Suites:** All-inclusive food and beverage offerings are provided to members in this area that is located just steps from the back of the end zone and Morgan Athletic Club.

**OTHER RECENT RENOVATIONS:** In the years prior to the venue hosting Super Bowl LVII at the conclusion of the 2022 season, over \$150 million in renovations occurred in and around State Farm Stadium.





**Stadium Club Area Renovation (\$28 million):** In 2017, the Cardinals revealed the first part of a two-phase expansion and renovation of the Club areas on the east and west sides of the stadium.

In addition to enhancing and expanding the pre-existing areas, the project included the creation of "Flight Lounge" which provides an intimate bar setting and features different brands of wine each week. Another major addition was the high-end "Bubble Lounge," a full-service bar that specializes in champagne and wine and features a ticketed pregame brunch experience through kickoff and an upscale a la carte menu beginning with the second quarter.

That phase also included the renovation of the bar areas on the Club level, going from six beer taps to 16. The primary 50-Yard lounges now include large (12' x 60') videoboards to easily permit viewing of eight games at one time.

Completed in 2018, phase two entailed completely renovating the balance of the Club level. A highlight of phase two was "The Tail Feather," a new speakeasy style lounge and full-service bar that offers fans an electric, Art Deco atmosphere. Located on the northeast side of the stadium, "The Tail Feather rivals the "Bubble Lounge" on the west side.

The phase two renovation also included new bars and food service areas in all four corners, new flooring and lighting, additional TVs, a new sound system and all new furniture.

A specialty lounge area, the "Bird's Nest," also has a new bar and food buffet, extensive millwork finishes and new furniture. Finally, all restrooms were completely renovated with new flooring, ceilings, lighting, wall tile, and a stone vanity.

**New Parking Lot, Pedestrian Tunnel & Bridge, Security Structures (\$28 million):** The "Black Lot" which features 4,015 additional parking spaces, opened prior to the 2018 season. Located between 95th and 91st avenues along Cardinals Way, the lot has access to the stadium grounds via a pedestrian underpass and a pedestrian bridge.

The tailgating areas were also upgraded and permanent shaded structures were built for security checkpoints.

**Stadium Loft Renovations (\$17 million):** In 2021, the Cardinals completed a two-year renovation of all 88 private lofts at State Farm Stadium. The improvements include enhanced cabinetry, flooring, furniture, appliances and finishes that complement the recently renovated Club spaces. The Loft level concourse was also improved with new flooring, restroom renovations, redesigned loft entryways and the addition of Arizona themed artwork sourced by local area artists.

**ARCHITECTURE:** World-renowned architect Peter Eisenman, in partnership with HOK Sport and Hunt Construction Group, created a state-of-the-art design that has already become a distinctive Arizona landmark. The stadium's exterior skin takes its design cue from the barrel cactus and features alternating sections of shimmering metal panels intended to reflect the shifting desert light alongside 21 magnificent vertical glass slots allowing fans a spectacular view of the horizon from any level of the interior.

**RETRACTABLE FIELD:** State Farm Stadium also features a unique rollout natural grass playing field, contained in a single tray weighing 18.9 million pounds (234 feet wide, 403 feet long). The first completely retractable field in the United States, it is positioned inside the stadium on game days to offer the preferred natural-grass playing surface for football and outside the stadium for the remaining days of the year to receive sunlight and watering. The field tray is powered by electric motors mounted on steel wheels riding on tracks embedded in the concrete floor and takes approximately 70 minutes to move completely. The flexibility of this unique design allows State Farm Stadium to serve as a true multipurpose venue featuring a 164,000 square-foot event floor for other events.

**RETRACTABLE ROOF:** Atop the stadium roof are two large retractable panels that open and close on an arc. The panels and much of the roof



are made of a translucent fabric called Birdair that enables light to penetrate and gives the venue an open, airy feel. When closed it also allows for an air-conditioned environment during the hot months, but the roof can be opened during cooler times of the year to take advantage of Arizona's patented sunshine. The roof takes about 12 minutes to open or close.

**MULTI-PURPOSE:** Because of the truly unique multi-purpose nature of the facility, State Farm Stadium is able to host far more than just Cardinals home games. Since opening in August of 2006, the building has hosted three Super Bowls, the 2015 Pro Bowl, two NCAA Men's basketball tournaments, the first-ever BCS National Championship game (Florida-Ohio State), Fiesta Bowls, international soccer matches, high school football championships, high school proms, monster truck and motocross events, and a variety of trade shows and conventions.

In December of 2016, State Farm Stadium hosted its 11th Fiesta Bowl and for the first time ever the game served as one of two College Football Playoff Semi-Final contests. Ohio State and Clemson met on New Year's Eve for a chance to play in the BCS National Championship Game. In December of 2019, State Farm Stadium again served as the site of a BCS semi-final as the Buckeyes and Tigers held a Fiesta Bowl rematch.

State Farm Stadium hosted Arizona's largest international soccer match in history as Haiti and Mexico took the pitch for the 2019 Concacaf Gold Cup Semifinal.

During the COVID-19 outbreak, State Farm Stadium served a number of important function as the site of numerous blood drives, PPE (Personal



Protective Equipment) drives, testing drives and as one of the nation's first, and most successful, vaccination sites. Early in the pandemic, one area hit particularly hard by the COVID-19 crisis was the local blood donation community, where the supply reached critically low levels. The stadium's size and the event's operational set-up ensured adherence to the necessary physical and social distancing guidelines while still accommodating the greatest possible number of donors. In April of 2020, the Cardinals and Project C.U.R.E hosted a PPE drive at State Farm Stadium to help meet the pressing need within the local healthcare community. On two separate occasions in May, the Cardinals and Dignity Health participated in the state's drive-through COVID-19 testing blitz in Orange Lot at State Farm Stadium.

In 2021, State Farm Stadium was also host to one of the first, and most successful, vaccination sites in the nation. Between January and April, more than 800,000 COVID-19 vaccines were administered at State Farm Stadium, which

accounted for nearly 20% of the total doses administered in Arizona during that period. The site was so successful that President Joe Biden and Vice President Kamala Harris participated in a virtual tour on February 8 and the administration called the operation "an incredible model." Biden told Arizona Department of Health Services Director Dr. Cara Christ during the tour; "I got a call during the Super Bowl from the commissioner of football (Roger Goodell) offering us, the federal government, the 30 major stadiums. They're going to be coming to you to look at how you did it because you're doing such a great job."

In a given year, ASM Global (the building's operator) successfully books 225+ event days for gatherings large, small and in between.





## HERITAGE AT SPORTSMAN'S PARK

"Heritage at Sportsman's Park" opened during the 2021 football season and was a \$12M project as part of the \$150M in renovations that took place between SB49 and SB57 and part of continued investment to make State Farm Stadium the most fan-friendly environment in the nation.

On game days, fans can purchase tickets for the "Cardinals Tailgate Party at Heritage Pavilion" and the venue is able to host additional events at Great Lawn on non-gamedays.



The Heritage Pavilion is a multi-level structure that provides fan comfort and convenience, featuring:

- ◆ Exclusive setting in private, shaded space
- ◆ Beer, wine, well-liquor and signature cocktails
- ◆ Outdoor beer garden
- ◆ Numerous TVs to catch "early game" action
- ◆ All-inclusive, high-end menu
- ◆ Private restrooms



## BETMGM SPORTSBOOK OPENS AT STATE FARM STADIUM

BetMGM, a leading sports betting and iGaming operator, and the Arizona Cardinals partnered on the nearly 17,000-square-foot BetMGM Sportsbook that opened for the start of the 2022 football season. The milestone opening marked the first sportsbook at an NFL stadium.

The two-story sports and entertainment destination operates on both event and non-event days. The BetMGM Sportsbook, located on the north side of The Great Lawn, combines the energy and viewing options of a state-of-the-art sportsbook with the amenities of a world-class sports bar. Featuring dual entrances from both sides of The Great Lawn, guests can experience a massive video wall to watch games, enhanced gameday parking options, as well as both indoor and outdoor dining options. Sports



fans can also place wagers at trading windows or utilize user-friendly betting kiosks conveniently placed throughout the space.

"The Arizona Cardinals and BetMGM are both committed

to enhancing the gameday experience for fans in new and creative ways," said BetMGM CEO Adam Greenblatt. "The BetMGM Sportsbook at State Farm Stadium is one of the most unique and innovative additions to a venue that the sports and entertainment industry has ever seen."

The BetMGM Sportsbook at State Farm Stadium complements the BetMGM mobile app that launched statewide in Arizona in September 2021. The BetMGM Sportsbook is the latest phase of BetMGM's exclusive partnership with the Arizona Cardinals.

## BETMGM SPORTSBOOK AT STATE FARM STADIUM

- ◆ **Size:** 16,800-square-feet
- ◆ **TVs:** 265-square-foot Video Wall and 38 TVs
- ◆ **Betting Kiosks:** More than 25
- ◆ **Capacity:** 500



SPORTSMAN'S PARK

The area that surrounds and encompasses State Farm Stadium is known as Sportsman's Park. The 160-acre footprint includes carparks, grass areas and an abundance of trees and other landscape native to the area.



acres, the Great Lawn extends west from 95th Avenue to the Loop 101. The lawn stretches over 1,000 feet and 4.61 acres total, which is designed for use by fans while tailgating at games or to use during other activities outside the stadium. Surrounding the Great Lawn is a 50-foot wide promenade. In addition to the uninterrupted expanse of grass, the Great Lawn includes areas for vendors and musicians.

On-site parking accommodates 14,000 cars as part of an innovative site plan designed to create a truly unique tailgating experience for fans. A tree-lined expanse of grass covering eight

PAT TILLMAN MEMORIAL

The plaza surrounding State Farm Stadium is known as the Pat Tillman Freedom Plaza, in honor of the former Cardinals safety who was killed in action on April 22, 2004 while serving his country as a member of the elite Army Ranger unit.



consulted with the team and Pat's wife, Marie, who worked to select the image of Tillman that would best convey his character and spirit. Serving as a backdrop to the sculpture is a nine-foot tall curved wall made of concrete that measures 42 feet across, symbolic of Tillman's jersey number at Arizona State.

Fans attending home games can visit the Pat Tillman Memorial located at the northwest side of the plaza. The memorial includes a large bronze sculpture of Tillman on the eastern side and a circular reflection pond on its western side.

The brimming pool of water on the western side consists of a large 60-foot circular pond made of black concrete and stainless steel. Intended to create a pool of tranquility, it has a surface area of 2,300 square feet.

The sculpture is approximately eight-feet tall, weighs over 500 pounds, and took nearly nine months to complete. After an extensive search, the Cardinals selected artists Omri Amrany and Gary Tillery to create the sculpture. The sculptors

To the west of the memorial is a grove of 40 Oak trees that symbolizes the jersey number Tillman wore as an Arizona Cardinal and the entire area is surrounded by a grove of Ash and Oak trees.

CARDINALS PRESERVE PAT TILLMAN'S LOCKER AT TEMPE FACILITY

On September 11, 2015, the 14th anniversary of the 9/11 terrorist attacks, the Cardinals unveiled the locker of former safety Pat Tillman at the team's Tempe Training Facility.

A new locker room was built as part of a two-year, \$15 million renovation of the facility, but Tillman's locker was preserved to display in a glass enclosure between the weight room and cafeteria. Included in the locker are Tillman's jersey, helmet, shoulder pads and draft card, along with a description of his life and career.

"We've decided to preserve Pat Tillman's locker, and tell his story," team owner Michael Bidwill said at the unveiling ceremony. "Many of our future players, and even current players, may not know the stories of the Cardinals. But we wanted to tell the stories and talk about the history, the history of our organization and the history of Pat Tillman."

After a decorated career at Arizona State University, Tillman was selected in the seventh round (226th overall) of the 1998 NFL Draft by the Cardinals and he played for Arizona from 1998-2001 before enlisting in the U.S. Army in 2002. He was killed in action in Afghanistan on April 22, 2004.

Tillman's No. 40 is retired by the Cardinals and he is a member of the team's Ring of Honor.





## CARDINALS COMPLETE ANOTHER SUCCESSFUL YEAR IN THE COMMUNITY

The 2023 season marked another successful year for the Arizona Cardinals Football Club and its various community-based activities.

Cardinals players, coaches, cheerleaders, mascot Big Red, alumni and front office staff continued the organization's ongoing efforts of being a champion in the community. Throughout the 2023 season, dozens of different players, alumni and members of the Cardinals Women's club took part in different community events and appearances that



impacted over 100,000 adults and children. The Cardinals also donated more than 500 pieces of merchandise and memorabilia throughout the past year.

The Cardinals signature community programs during the 2023 season included but were not limited to - the SRP and Albertsons/Safeway Milk and Cookies Reading program, Cardinals Youth Training Camps, and the NFL Flag Football program - these programs will all be back in 2024.

### **SRP/SAFEWAY MILK AND COOKIES PROGRAM**

- ◇ Entering its 23rd consecutive season.
- ◇ Each Tuesday during the season, a different Cardinals player along with team mascot Big Red read to students at various Valley elementary schools and distribute milk and cookies provided by Albertsons and Safeway.

### **YOUTH TRAINING CAMPS**

- ◇ Entering its 27th consecutive season. Current and former Cardinals players and Big Red provide football instruction and guidance to students across the Valley at elementary schools and State Farm Stadium. The players and Big Red also help promote the NFL's Play 60 message to encourage kids to receive 60 minutes of daily exercise.

### **NFL FLAG FOOTBALL PROGRAM**

- ◇ Entering its 22nd consecutive season and presented by Albertsons and Safeway.
- ◇ 5-on-5 non-contact flag football league for boys and girls to provide basic fundamentals of football throughout the southwest with teams in Arizona and New Mexico. The Cardinals NFL Flag Football Program has developed into one of the league's largest.
- ◇ In 2023, the annual regional tournament hosted over 750 athletes from six states participating throughout the weekend. Since its inception, 30 teams from the Cardinals NFL Flag program have been crowned as national champions.

The Cardinals also also continued their involvement with Arizona high school football with the weekly "High School Coach-of-the-Week" and "High School Player-of-the-Week" awards during the 2023 season. Both programs are back for the 2024 season.

### **"HIGH SCHOOL COACH-OF-THE-WEEK"**

- ◇ Starting its 30th consecutive season.
- ◇ Every week during the high school football season, a local panel selects a High School Coach of the Week and awards him a certificate signed by team Owner Michael Bidwill and Head Coach Jonathan Gannon in addition to a \$2,000 check to the coach's school.
- ◇ In 2023, 11 coaches were selected and a total of \$10,000 was awarded to Arizona high school football programs.
- ◇ Co-Coaches-of-the-Year were selected following the 2023 high school season and Mark and Marcus Carter from Desert Edge H.S. were awarded an additional \$4,000 for their school.

### **"HIGH SCHOOL PLAYER-OF-THE-WEEK"**

- ◇ Starting its 22nd consecutive season.
- ◇ Every week during the high school football season, a local panel selects a High School Player of the Week who receives a football trophy acknowledging the award at the players' school during an awards ceremony.
- ◇ In 2023, 10 players were selected and each was awarded at their school in front of their peers with team mascot Big Red and a Cardinals alumni.
- ◇ A "Player-of-the-Year" was selected following the high school season and quarterback Desmond Williams from Basha H.S. was given a customized Cardinals jersey and a football trophy engraved with his season stats. Williams will be attending the University of Washington this fall.

The Cardinals also remained busy during the holidays giving back to those less fortunate. Along with hosting a game day toy drive to benefit The Foster Alliance and several food drives benefiting the United Food Bank, two of the marquee programs that the Cardinals participate in each season during that time of year are "Feed the Hungry" and "Paw Express."

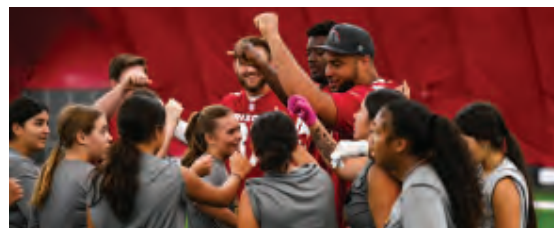
### **HELP FEED THE HUNGRY**

- ◇ Last year, Cardinals players and their families along with owner Michael Bidwill, front office personnel, cheerleaders and Big Red helped serve Thanksgiving dinner at the Phoenix Rescue Mission for more than 500 people.
- ◇ The 2023 season marked the 21st consecutive year of working with the Phoenix Rescue Mission during Thanksgiving.

In addition to being active throughout the community with various player appearances and events, the Cardinals also gave back to the people of Arizona with donations of merchandise and memorabilia.

### **CARDINALS DONATIONS**

- ◇ In 2023, the Cardinals donated over 6,000 game tickets, 700 pairs of cleats and 650 autographed footballs.







CARDINALS BROADCASTING

**CARDINALS ON THE RADIO**

The Cardinals are pleased to continue their partnership with Bonneville and Arizona Sports, 98.7 FM in 2024. Arizona Sports has been the flagship radio station for the Cardinals since 2005.

**GAME-DAY RADIO PROGRAMMING**

In 2024, Cardinals games will air on Arizona Sports, 98.7 FM. Arizona Sports will also air pre-game and post-game programming for every contest.

Calling the play-by-play for his 23rd season with the Cardinals is Dave Pasch. He joined the team in 2002 after three seasons as the football and basketball voice of Syracuse University. In addition to Cardinals broadcasts, Pasch can be seen on ESPN calling NBA action as well as college football and basketball.

Joining Pasch for his 20th year as radio color analyst is former fullback Ron Wolfley, a four-time Pro Bowl selection and special-teams standout with the Cardinals who selected him in the fourth round of the 1985 draft. One-half of the "Wolf and Luke Show" on Arizona Sports, 98.7 FM, the Buffalo, NY native played collegiately at West Virginia before enjoying a 10-year NFL career with the Cardinals (1985-91), Browns (1992-93) and Rams (1995).

For the 20th consecutive season, Cardinals reporter Paul Calvisi will provide sideline commentary during the game broadcasts.

Game-day programming begins four-and-a-half hours prior to kickoff on Arizona Sports, 98.7 FM with "Cardinals Early Bird," a half-hour look at the week of preparation including exclusive features, game previews and interviews with head coach Jonathan Gannon and his players.

Three hours prior to kickoff is "The Arizona Cardinals NFL Kickoff Show" hosted by Cardinals digital content coordinator Craig Grialou. Grialou is joined by azcardinals.com insider Darren Urban and team reporter Dani Sureck. The show spotlights the upcoming Cardinals matchup and the latest game day news from around the NFL.

Two hours prior to kickoff, sideline reporter Paul Calvisi is joined by former Cardinals linebacker Rob Fredrickson, former defensive end Kyle Vanden



Dave Pasch



Ron Wolfley



Paul Calvisi

Bosch and Cardinals Ring of Honor member Roy Green for the "Arizona Cardinals Pregame Huddle." Fredrickson played for the Cardinals from 1999-2002 during his nine-year career while Vanden Bosch made three Pro Bowls during his 12 NFL seasons which included time in Arizona from 2001-04. Green was an all-pro receiver for the Cardinals from 1979-1990 and remains near the top of many statistical categories in the team record book. Other contributors to the show are Cardinals reporter Dani Sureck, former Arizona Republic Cardinals beat writer Kent Somers and award-winning reporter Jody Jackson.

"Cardinal Talk," a post-game fan-interactive program, can be heard immediately following each contest on Arizona Sports, 98.7 FM. Hosted by Grialou, "Cardinal Talk" allows fans to voice their opinion on each game and hear expert analysis from a rotation of Fredrickson, Vanden Bosch, Somers and Jackson.

**WEEKDAY RADIO PROGRAMMING**

Grialou hosts "The Cardinals Red Sea Report," a one-hour show airing each Tuesday at 11:00 AM on ESPN 620 AM. The program reviews the previous Cardinals game, provides NFL updates and features expert analysis from Vanden Bosch and Fredrickson.

Back for its 24th year is "The Big Red Rage presented by San Tan Ford." The hour-long show is co-hosted by Paul Calvisi and Ron Wolfley, who will be joined by players each week during the season. The year-round show airs Thursday evenings from 6:00-7:00 PM on Arizona Sports, 98.7 FM. If there is a scheduling conflict with a Diamondbacks or Suns game, the show will air on ESPN 620 AM. Check [www.azcardinals.com](http://www.azcardinals.com) or @AZCardinals on Twitter for date and time updates.



CARDINALS RADIO AFFILIATES

Name	Call Letters	Station City	Name	Call Letters	Station City
KTAR	98.7 FM	Phoenix	KVNA	600 AM & 104.7 FM	Flagstaff
KATO	1230 AM	Safford	KZUA	92.1 FM	Holbrook
KAZM	780 AM	Sedona	KNKI	106.7 FM	Show Low
KNTR	980 AM	Lake Havasu	KIKO	1340 AM	Miami
KDDL	94.3 FM & 100.7 FM	Prescott Valley	KGMM	100.1 FM	Kingman
KQNA	1130 AM/99.9 FM/95.5 FM	Prescott Valley	KWRK/KCAZ	96.1 FM	Window Rock
KTZR	1450 AM	Tucson	KCAZ	99.5 FM	Window Rock



## SPANISH RADIO

Over the last 24 seasons, the Cardinals have connected with its Spanish language speaking fans by becoming the first professional team in Arizona to offer all games on Spanish radio (2000). The team has Spanish-language social media accounts on Instagram (@azcardenales) and Twitter (@azcardenales).

Mexico City native Luis Hernández will handle the play-by-play call for the Cardinals, his fifth season in that role and his 16th season in a broadcast capacity with the club. Joining Hernandez for his first year as a color analyst is Irving Villanueva, a bilingual reporter/producer for the Cardinals.

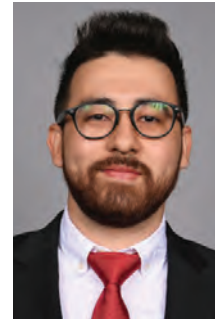
The Cardinals Spanish-language game broadcast airs locally in Phoenix on Fuego 106.7 FM.

In addition to the game broadcasts, Fuego 106.7 FM will also air two pregame shows – Primera Y Diez (First & 10), a Spanish-language pregame show summarizing the latest NFL news as well as Conteo Progresivo (Countdown), a Spanish-language pregame show focusing specifically on the Cardinals and their upcoming opponent.

Following each Cardinals game, Fuego 106.7 FM



Luis Hernandez



Irving Villanueva

will also broadcast the team's postgame show, Punto Extra (Extra Point), a 15-minute Spanish-language show recapping the action.

For the 17th straight season, the Cardinals will also bring the Spanish language broadcast to fans in Mexico.

## CARDINALS ON TELEVISION

### PRE-SEASON TV

The Cardinals are pleased to continue their partnership with KPNX 12 News, the exclusive home for preseason television and other Cardinals programs. 12 News will carry all three preseason telecasts in 2023. Dave Pasch (play-by-play) will be joined by Ron Wolfley (analyst) on the call with Cardinals reporter Dani Sureck on the sideline.

### TEAM SHOWS

There will be three Cardinals TV programs available throughout the 2023 season and into next year: "Cardinals In Focus," "Cardinals Game Plan with Head Coach Jonathan Gannon," and "Cardinals Locker Room." The programs can be found on NBC 12 News (KPNX-TV), and FOX 11 (KMSB-TV) in Tucson.

"Cardinals In Focus" is a weekly half-hour program dedicated to providing a close-up view of the team, on and off the field. Each week, Emmy-award winning segments such as the popular "Wired" tell

the story of the season and shed light on the personalities within the team. The show is hosted by Paul Calvisi and Dani Sureck (NBC 12 News, Saturday 6:30 PM)

"Cardinals Game Plan with Head Coach Jonathan Gannon" allows viewers to see and hear the inside story straight from the man in charge. Co-hosted by Calvisi and Ron Wolfley, the show will feature an in-depth look at key plays from the previous week's game with an eye on the upcoming opponent and the Cardinals plan for victory (NBC 12 News, Friday 6:30 PM)

"Cardinals Locker Room" will air immediately following Sunday Night Football on NBC and will provide all of the highlights and analysis from the Cardinals game as well as around the NFL. The program will include appearances from Cardinals players and coaches following the game (NBC 12 News, Sunday evenings following SNF\*)

\*Check weekly local listings for specific times or log on to [www.azcardinals.com](http://www.azcardinals.com) for up-to-date show-times.

### CARDINALS PODCASTS

Episodes of Cardinals Podcasts like The Dave Pasch Podcast, Cardinals Underground, Cardinals Cover 2, Big Red Rage and The Cardinals Red Sea Report can be downloaded via Apple Podcasts and Spotify. For the full listing of podcasts, visit [www.azcardinals.com/podcasts](http://www.azcardinals.com/podcasts).





CARDINALS CHEERLEADERS

Whether it's performing at all Arizona Cardinals home games, community service involvement, appearances at other sporting and civic events, or just signing autographs, the Arizona Cardinals Cheerleaders are recognized throughout the country for their talent, exciting dance routines and professionalism.

The cheerleaders have performed throughout the United States, Mexico, and Canada.



CARDINALS CHEERLEADERS

At the invitation of the Pentagon, the cheerleaders also have entertained U.S. military troops in Saudi Arabia, Kuwait, Bosnia, Egypt, Greenland, Kosovo, Bahrain and China.

Through their talent, showmanship, enthusiasm and dedication to their community and

country, the cheerleaders have established themselves as an integral part of the Cardinals organization.



BIG RED

**Biography**

**Hatched:** October 4, 1998

**Home:** State Farm Stadium

**Height:** 6'-4"

**Wingspan:** Seven feet

**Position:** Center (of attention!)

**Favorite Foods:** Bird seed and gummy worms (no chicken wings)

**Favorite Song:** "Bird Is The Word"

**Off The Field:** Big Red can be found throughout Arizona at schools, charity events, and birthday parties.





## INDEX

100-Yard Receiving Games.....	213-215	Miscellaneous Stats, 2023.....	204-205
100-Yard Rushing Games .....	211-212	New Seating Options in 2024.....	65
1947 Championship Team .....	244-245	NFL Calendar (2024-25).....	11
2023 Final Statistics.....	178	Offensive Rankings, Year-By-Year.....	359
300-Yard Passing Games .....	216-217	Ossenfort, Monti (Bio) .....	9-10
All-Time Roster, Alpha & Numerical.....	248-263	Overtime Games .....	362
Arizona's Family Partnership .....	73	Participation, 2023 .....	203
Assistant Coaches, All-Time .....	354-355	Passing Yards, Single-Game Best .....	208-209
Assistant Coaches (Bios) .....	14-42	PFWA Awards, 2023 .....	153
Athletic Training/Equipment/Video (Bios) .....	51-52	Player Bios, 2024 .....	59-176
Attendance Records, Game/Season .....	232	Player of the Week, All-Time .....	361
Awards (All-NFL/Postseason).....	363-365	Player Personnel (Bios).....	43-51
Bidwill, Michael J. (Bio).....	6-8	Playoffs, All-Time .....	233
Bidwill Coaching Fellowship .....	69	Postseason Records, Individual/Team .....	233-235
Big Red .....	383	PR Contacts (Cardinals) .....	384
Birthdays, Cardinals Players & Coaches .....	150	Preseason Results, All-Time .....	330-333
Broadcasting Info.....	381-382	Primetime Games, All-Time .....	352-353
Cheerleaders .....	383	Pro Bowlers, Alphabetical.....	360
Civics Matters Arizona (2024) .....	17	Pro Bowlers, By Year .....	359
Community Involvement .....	380	Quarterbacks, 1960-2023 .....	351
Daylight Saving .....	21	Radio Affiliates .....	381
Defensive Rankings, Year-By-Year .....	360	Receiving Yards, Single-Game Best.....	209
Defensive Statistics, 2023 .....	179-182	Records, Individual .....	217-225
Defensive Touchdowns, 1960-2023.....	349-350	Records, Team.....	229-232
Directory, Cardinals Staff.....	4-5	Results, Year-By-Year.....	266-329
Draft History .....	366-372	Retired Jerseys .....	264
Draft Party, 2024 .....	92	Ring of Honor Inductees.....	356-358
Game Summaries, 2023.....	186-202	Rod Graves Scouting Award .....	160
Game Summaries, Postseason in Arizona.....	236-241	Rushing Yards, Single-Game Best .....	207-208
Game-By-Game Stats, 2023.....	184-185	Sacks, Single-Game Bests .....	209
Gannon, Jonathan (Bio).....	12-13	Schoenfeld Memorial Press Box .....	333
Girls Flag Football, 2023 Award Winners.....	136	Shutouts, All-Time .....	347
Girls Flag Football, Live of Arizona's Family in 2024 .....	10	Spanish Broadcasts .....	382
Greatest Comebacks, All-Time.....	226-228	Special Teams Touchdowns, 1960-2023 .....	350
Hall of Fame Cardinals .....	263	State Farm Stadium, Info.....	374-377
Head Coaches, All-Time.....	354	Statistical Leaders, Year-By-Year .....	340-345
Headshots, Administrative Staff.....	53-57	Team-By-Team Results, NFL .....	334-339
Heritage at Sportsman's Park / BetMGM Sportsbook.....	378	Thanksgiving Games .....	353
High School Football 2023 Award Winners .....	111	Tillman Locker at Training Facility .....	379
History of Franchise .....	243-247	Tillman Memorial.....	379
Stadiums.....	114	Turnover Differentials, Year-By-Year .....	346
Longest Plays .....	209-211	Two-Point Conversions, All-Time .....	348
Longevity Records, Individual.....	225	Walls, Jeremy (Bio).....	11
Miscellaneous Records, Team .....	232		

## CARDINALS MEDIA RELATIONS CONTACTS

<b>Mark Dalton</b> .....	<b>Senior Vice President, Media Relations</b>
Direct Phone.....	.602/379-1720
E-mail.....	mdalton@cardinals.nfl.net
<b>Chris Melvin</b> .....	<b>Senior Director, Media Relations</b>
Direct Phone.....	.602/379-1882
E-mail.....	cmelvin@cardinals.nfl.net
<b>Mike Helm</b> .....	<b>Senior Manager, Media Relations</b>
Direct Phone.....	.602/379-1647
E-mail.....	mhelm@cardinals.nfl.net
<b>Clint Cohen</b> .....	<b>Coordinator, Corporate &amp; Football Communications</b>
Direct Phone.....	.602/379-1620
E-mail.....	ccohen@cardinals.nfl.net
<b>Jocelyn Jones</b> .....	<b>Media Relations Coordinator</b>
Direct Phone.....	.602/379-1724
E-mail.....	jjones@cardinals.nfl.net

**2024 Media Guide Credits:** Written and edited by the Arizona Cardinals Media Relations department: Mark Dalton, Chris Melvin, Mike Helm, Clint Cohen and Jocelyn Jones with special acknowledgement to all past Cardinals public and media relations staff members who have contributed to this publication through the years. Primary photography provided by Caitlyn Espel, Derrick Spencer, Gene Lower and Peter Vander Stoep. Special editorial and statistical assistance provided by Santo Labombarda and the Elias Sports Bureau as well as Pete Fierle and the Pro Football Hall of Fame. Additional editorial assistance from T.J. Troup and Michael Brenner.  
**Design:** Mike Chavez.

